

SMS Antibody
Affinity Purified Rabbit Polyclonal Antibody (Pab)
Catalog # AP5883A

Specification

SMS Antibody - Product Information

Application	FC, WB, IHC-P,E
Primary Accession	P52788
Other Accession	NP_004586.2
Reactivity	Human
Host	Rabbit
Clonality	Polyclonal
Isotype	Rabbit IgG
Calculated MW	41268

SMS Antibody - Additional Information

Gene ID 6611

Other Names

Spermine synthase, SPMSY, Spermidine aminopropyltransferase, SMS

Target/Specificity

This SMS Antibody is generated from rabbits immunized with recombinant protein of human SMS.

Dilution

FC~~1:10~50

WB~~1:1000

IHC-P~~1:10~50

E~~Use at an assay dependent concentration.

Format

Purified polyclonal antibody supplied in PBS with 0.09% (W/V) sodium azide. This antibody is purified through a protein A column, followed by peptide affinity purification.

Storage

Maintain refrigerated at 2-8°C for up to 2 weeks. For long term storage store at -20°C in small aliquots to prevent freeze-thaw cycles.

Precautions

SMS Antibody is for research use only and not for use in diagnostic or therapeutic procedures.

SMS Antibody - Protein Information

Name SMS {ECO:0000303|PubMed:14508504, ECO:0000312|HGNC:HGNC:11123}

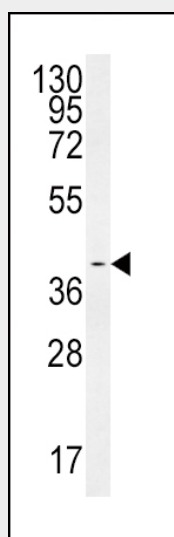
Function Catalyzes the production of spermine from spermidine and decarboxylated S-adenosylmethionine (dcSAM).

SMS Antibody - Protocols

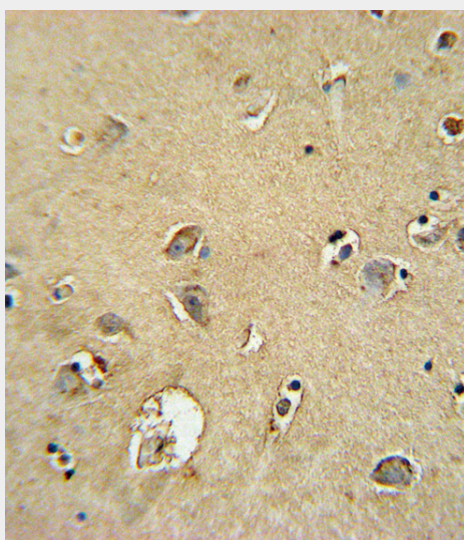
Provided below are standard protocols that you may find useful for product applications.

- [Western Blot](#)
- [Blocking Peptides](#)
- [Dot Blot](#)
- [Immunohistochemistry](#)
- [Immunofluorescence](#)
- [Immunoprecipitation](#)
- [Flow Cytometry](#)
- [Cell Culture](#)

SMS Antibody - Images

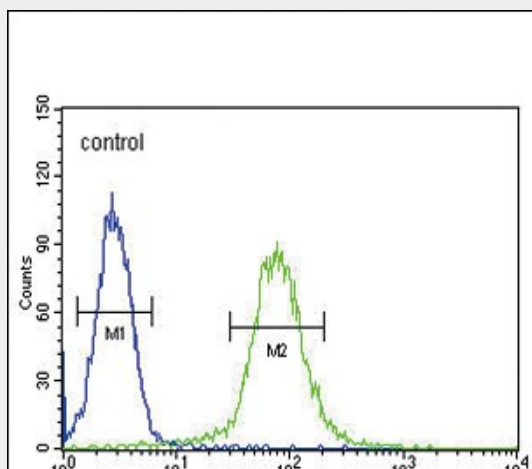


SMS Antibody (Cat. #AP5883a) western blot analysis in HeLa cell line lysates (35ug/lane). This demonstrates the SMS antibody detected the SMS protein (arrow).



SMS Antibody (Cat. #AP5883a) immunohistochemistry analysis in formalin fixed and paraffin embedded human brain tissue followed by peroxidase conjugation of the secondary antibody and

DAB staining. This data demonstrates the use of the SMS Antibody for immunohistochemistry. Clinical relevance has not been evaluated.



SMS Antibody (Cat. #AP5883a) flow cytometric analysis of Hela cells (right histogram) compared to a negative control cell (left histogram). FITC-conjugated goat-anti-rabbit secondary antibodies were used for the analysis.