

KLHL24 Polyclonal Antibody
Purified Rabbit Polyclonal Antibody (Pab)
Catalog # AP58847**Specification**

KLHL24 Polyclonal Antibody - Product Information

Application	IHC-P, WB
Primary Accession	Q6TFL4
Reactivity	Rat, Dog
Host	Rabbit
Clonality	Polyclonal
Calculated MW	68361

KLHL24 Polyclonal Antibody - Additional Information**Gene ID** 54800**Other Names**

Kelch-like protein 24, Kainate receptor-interacting protein for GluR6, KRIP6, Protein DRE1, KLHL24, DRE1

Format

0.01M TBS(pH7.4), 0.09% (W/V) sodium azide and 50% Glyce

Storage

Store at -20 °C for one year. Avoid repeated freeze/thaw cycles. When reconstituted in sterile pH 7.4 0.01M PBS or diluent of antibody the antibody is stable for at least two weeks at 2-4 °C.

KLHL24 Polyclonal Antibody - Protein Information**Name** KLHL24**Synonyms** DRE1**Function**

Necessary to maintain the balance between intermediate filament stability and degradation, a process that is essential for skin integrity (PubMed:27889062). As part of the BCR(KLHL24) E3 ubiquitin ligase complex, mediates ubiquitination of KRT14 and controls its levels during keratinocytes differentiation (PubMed:27798626). Specifically reduces kainate receptor-mediated currents in hippocampal neurons, most probably by modulating channel properties (By similarity). Has a crucial role in cardiac development and function (PubMed:30715372).

Cellular Location

Perikaryon. Cell projection, axon {ECO:0000250|UniProtKB:Q56A24}. Cytoplasm

{ECO:0000250|UniProtKB:Q56A24, ECO:0000269|PubMed:27889062}. Cell junction, desmosome.
Cell junction, adherens junction

Tissue Location

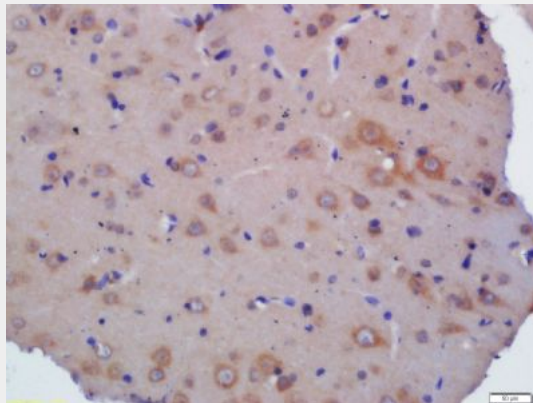
Expressed in the skin (PubMed:27889062, PubMed:27798626). Found in keratinocytes, dermal fibroblasts, and melanocytes (PubMed:27889062). Basal-layer keratinocytes have lower KLHL24 expression than suprabasal keratinocytes (PubMed:27798626) Expressed in the brain, spinal cord, liver, testis, heart and at higher levels in the skeletal muscle (PubMed:30715372)

KLHL24 Polyclonal Antibody - Protocols

Provided below are standard protocols that you may find useful for product applications.

- [Western Blot](#)
- [Blocking Peptides](#)
- [Dot Blot](#)
- [Immunohistochemistry](#)
- [Immunofluorescence](#)
- [Immunoprecipitation](#)
- [Flow Cytometry](#)
- [Cell Culture](#)

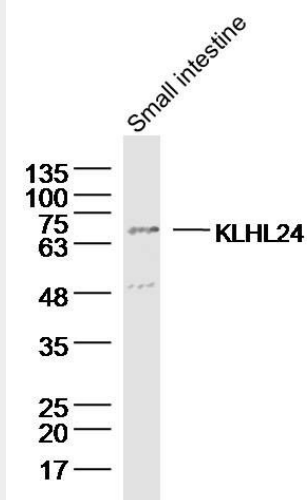
KLHL24 Polyclonal Antibody - Images



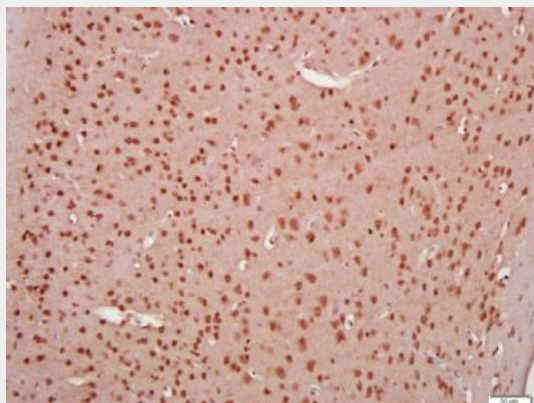
Tissue/cell: rat brain tissue; 4% Paraformaldehyde-fixed and paraffin-embedded;

Antigen retrieval: citrate buffer (0.01M, pH 6.0), Boiling bathing for 15min; Block endogenous peroxidase by 3% Hydrogen peroxide for 30min; Blocking buffer (normal goat serum,C-0005) at 37°C for 20 min;

Incubation: Anti-KLHL24 Polyclonal Antibody, Unconjugated(bs-8050R) 1:200, overnight at 4°C, followed by conjugation to the secondary antibody(SP-0023) and DAB(C-0010) staining



Sample: Small intestine (mouse) Lysate at 40 ug
Primary: Anti- KLHL24(bs-8050R) at 1/300 dilution
Secondary: IRDye800CW Goat Anti-Rabbit IgG at 1/20000 dilution
Predicted band size: 68 kD
Observed band size: 68 kD



Paraformaldehyde-fixed, paraffin embedded (Mouse brain); Antigen retrieval by boiling in sodium citrate buffer (pH6.0) for 15min; Block endogenous peroxidase by 3% hydrogen peroxide for 20 minutes; Blocking buffer (normal goat serum) at 37°C for 30min; Antibody incubation with (KLHL24) Polyclonal Antibody, Unconjugated (bs-8050R) at 1:400 overnight at 4°C, followed by a conjugated secondary (sp-0023) for 20 minutes and DAB staining.