

ILKAP Antibody (Center)
Affinity Purified Rabbit Polyclonal Antibody (Pab)
Catalog # AP5884c**Specification**

ILKAP Antibody (Center) - Product Information

Application	IHC-P, WB,E
Primary Accession	Q9H0C8
Other Accession	Q9Z1Z6 , Q8R0F6 , Q0IIF0 , NP_110395.1
Reactivity	Human, Mouse
Predicted	Bovine, Rat
Host	Rabbit
Clonality	Polyclonal
Isotype	Rabbit IgG
Calculated MW	42907
Antigen Region	243-270

ILKAP Antibody (Center) - Additional Information**Gene ID** 80895**Other Names**

Integrin-linked kinase-associated serine/threonine phosphatase 2C, ILKAP, ILKAP

Target/Specificity

This ILKAP antibody is generated from rabbits immunized with a KLH conjugated synthetic peptide between 243-270 amino acids from the Central region of human ILKAP.

Dilution

IHC-P~~1:50~100

WB~~1:1000

E~~Use at an assay dependent concentration.

Format

Purified polyclonal antibody supplied in PBS with 0.09% (W/V) sodium azide. This antibody is purified through a protein A column, followed by peptide affinity purification.

Storage

Maintain refrigerated at 2-8°C for up to 2 weeks. For long term storage store at -20°C in small aliquots to prevent freeze-thaw cycles.

Precautions

ILKAP Antibody (Center) is for research use only and not for use in diagnostic or therapeutic procedures.

ILKAP Antibody (Center) - Protein Information**Name** ILKAP

Function Protein phosphatase that may play a role in regulation of cell cycle progression via dephosphorylation of its substrates whose appropriate phosphorylation states might be crucial for cell proliferation. Selectively associates with integrin linked kinase (ILK), to modulate cell adhesion and growth factor signaling. Inhibits the ILK-GSK3B signaling axis and may play an important role in inhibiting oncogenic transformation.

Cellular Location

Cytoplasm.

Tissue Location

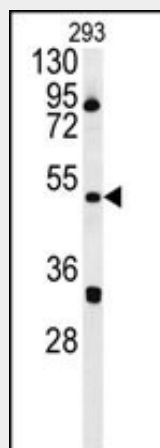
Widely expressed. Highest levels expressed in striated muscle. Much lower levels evident in various smooth muscle tissues.

ILKAP Antibody (Center) - Protocols

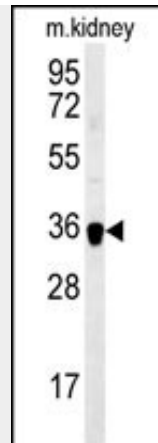
Provided below are standard protocols that you may find useful for product applications.

- [Western Blot](#)
- [Blocking Peptides](#)
- [Dot Blot](#)
- [Immunohistochemistry](#)
- [Immunofluorescence](#)
- [Immunoprecipitation](#)
- [Flow Cytometry](#)
- [Cell Culture](#)

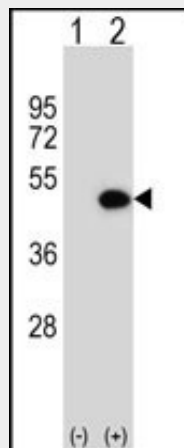
ILKAP Antibody (Center) - Images



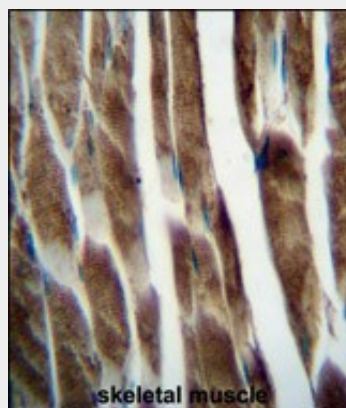
ILKAP Antibody (Center) (Cat. #AP5884c) western blot analysis in 293 cell line lysates (35ug/lane). This demonstrates the ILKAP antibody detected the ILKAP protein (arrow).



ILKAP Antibody (Center) (Cat. #AP5884c) western blot analysis in mouse kidney tissue lysates (35ug/lane). This demonstrates the ILKAP antibody detected the ILKAP protein (arrow).



Western blot analysis of ILKAP (arrow) using rabbit polyclonal ILKAP Antibody (Center) (Cat. #AP5884c). 293 cell lysates (2 ug/lane) either nontransfected (Lane 1) or transiently transfected (Lane 2) with the ILKAP gene.



ILKAP Antibody (Center) (Cat. #AP5884c) immunohistochemistry analysis in formalin fixed and paraffin embedded human skeletal muscle followed by peroxidase conjugation of the secondary antibody and DAB staining. This data demonstrates the use of ILKAP Antibody (Center) for immunohistochemistry. Clinical relevance has not been evaluated.