

AGFG2 Polyclonal Antibody
Purified Rabbit Polyclonal Antibody (Pab)
Catalog # AP58860**Specification****AGFG2 Polyclonal Antibody - Product Information**

Application	WB, IHC-P, IHC-F, IF, E
Primary Accession	O95081
Reactivity	Rat, Pig, Bovine
Host	Rabbit
Clonality	Polyclonal
Calculated MW	49 KDa
Physical State	Liquid
Immunogen	KLH conjugated synthetic peptide derived from human AGFG2
Epitope Specificity	381-481/481
Isotype	IgG
Purity	
affinity purified by Protein A	
Buffer	0.01M TBS (pH7.4) with 1% BSA, 0.02% Proclin300 and 50% Glycerol.
SIMILARITY	Contains 1 Arf-GAP domain.
SUBUNIT	Interacts with EPS15R (By similarity).
Important Note	This product as supplied is intended for research use only, not for use in human, therapeutic or diagnostic applications.

Background Descriptions

Required for vesicle docking or fusion during acrosome biogenesis (By similarity). May play a role in RNA trafficking or localization. In case of infection by HIV-1, acts as a cofactor for viral Rev and promotes movement of Rev-responsive element-containing RNAs from the nuclear periphery to the cytoplasm. This step is essential for HIV-1 replication.

AGFG2 Polyclonal Antibody - Additional Information**Gene ID** 3268**Other Names**

Arf-GAP domain and FG repeat-containing protein 2, HIV-1 Rev-binding protein-like protein, Rev/Rex activation domain-binding protein related, RAB-R, AGFG2, HRBL, RABR

Dilution

WB~~1:1000<br \>IHC-P~~N/A<br \>IHC-F~~N/A<br \>IF~~1:50~200<br \>E~~N/A

Storage

Store at -20 °C for one year. Avoid repeated freeze/thaw cycles. When reconstituted in sterile pH

7.4 0.01M PBS or diluent of antibody the antibody is stable for at least two weeks at 2-4 °C.

AGFG2 Polyclonal Antibody - Protein Information

Name AGFG2

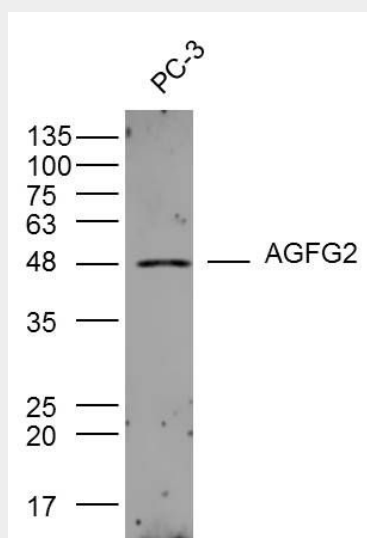
Synonyms HRBL, RABR

AGFG2 Polyclonal Antibody - Protocols

Provided below are standard protocols that you may find useful for product applications.

- [Western Blot](#)
- [Blocking Peptides](#)
- [Dot Blot](#)
- [Immunohistochemistry](#)
- [Immunofluorescence](#)
- [Immunoprecipitation](#)
- [Flow Cytometry](#)
- [Cell Culture](#)

AGFG2 Polyclonal Antibody - Images



Sample:

PC-3 Cell (Human) Lysate at 30 ug

Primary: Anti- AGFG2 (bs-8073R) at 1/300 dilution

Secondary: IRDye800CW Goat Anti-Rabbit IgG at 1/20000 dilution

Predicted band size: 49 kD

Observed band size: 49 kD