

CCDC30 Polyclonal Antibody
Purified Rabbit Polyclonal Antibody (Pab)
Catalog # AP58870**Specification**

CCDC30 Polyclonal Antibody - Product Information

Application	IHC-P, WB
Primary Accession	Q5VVM6
Host	Rabbit
Clonality	Polyclonal
Calculated MW	91333

CCDC30 Polyclonal Antibody - Additional Information**Gene ID** 728621**Other Names**

Coiled-coil domain-containing protein 30, Prefoldin subunit 6-like protein, CCDC30, PFDN6L

Format

0.01M TBS(pH7.4), 0.09% (W/V) sodium azide and 50% Glyce

Storage

Store at -20 °C for one year. Avoid repeated freeze/thaw cycles. When reconstituted in sterile pH 7.4 0.01M PBS or diluent of antibody the antibody is stable for at least two weeks at 2-4 °C.

CCDC30 Polyclonal Antibody - Protein Information**Name** CCDC30**Synonyms** PFDN6L**Tissue Location**

Expressed in brain, kidney, pancreas, placenta, liver, thymus and prostate.

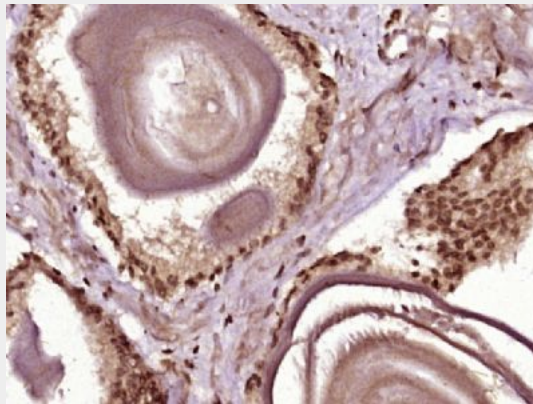
CCDC30 Polyclonal Antibody - Protocols

Provided below are standard protocols that you may find useful for product applications.

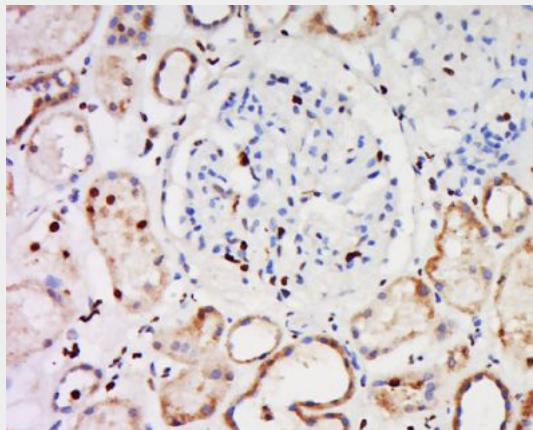
- [Western Blot](#)
- [Blocking Peptides](#)
- [Dot Blot](#)
- [Immunohistochemistry](#)
- [Immunofluorescence](#)
- [Immunoprecipitation](#)
- [Flow Cytometry](#)

- [Cell Culture](#)

CCDC30 Polyclonal Antibody - Images



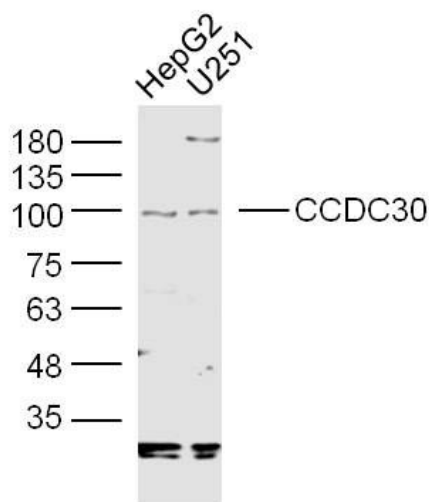
Paraformaldehyde-fixed, paraffin embedded (Human prostate); Antigen retrieval by boiling in sodium citrate buffer (pH6.0) for 15min; Block endogenous peroxidase by 3% hydrogen peroxide for 20 minutes; Blocking buffer (normal goat serum) at 37°C for 30min; Antibody incubation with (CCDC30) Polyclonal Antibody, Unconjugated (bs-8097R) at 1:400 overnight at 4°C, followed by operating according to SP Kit(Rabbit) (sp-0023) instructions and DAB staining.



Tissue/cell: human kidney tissue; 4% Paraformaldehyde-fixed and paraffin-embedded;

Antigen retrieval: citrate buffer (0.01M, pH 6.0), Boiling bathing for 15min; Block endogenous peroxidase by 3% Hydrogen peroxide for 30min; Blocking buffer (normal goat serum,C-0005) at 37°C for 20 min;

Incubation: Anti-CCDC30 Polyclonal Antibody, Unconjugated(bs-8097R) 1:500, overnight at 4°C, followed by conjugation to the secondary antibody(SP-0023) and DAB(C-0010) staining



Sample:

HepG2 Cell (Human) Lysate at 40 ug

U251 Cell (Human) Lysate at 40 ug

Primary: Anti-CCDC30 (bs-8097R) at 1/300 dilution

Secondary: IRDye800CW Goat Anti-Rabbit IgG at 1/20000 dilution

Predicted band size: 91 kD

Observed band size: 95 kD