

**CCDC93 Polyclonal Antibody**  
**Purified Rabbit Polyclonal Antibody (Pab)**  
**Catalog # AP58894****Specification**

---

**CCDC93 Polyclonal Antibody - Product Information**

|                   |                        |
|-------------------|------------------------|
| Application       | IHC-P                  |
| Primary Accession | <a href="#">Q567U6</a> |
| Reactivity        | Rat, Pig, Dog, Bovine  |
| Host              | Rabbit                 |
| Clonality         | Polyclonal             |
| Calculated MW     | 73198                  |

**CCDC93 Polyclonal Antibody - Additional Information****Gene ID** 54520**Other Names**

Coiled-coil domain-containing protein 93, CCDC93

**Format**

0.01M TBS(pH7.4), 0.09% (W/V) sodium azide and 50% Glyce

**Storage**

Store at -20 °C for one year. Avoid repeated freeze/thaw cycles. When reconstituted in sterile pH 7.4 0.01M PBS or diluent of antibody the antibody is stable for at least two weeks at 2-4 °C.

**CCDC93 Polyclonal Antibody - Protein Information****Name** CCDC93**Function**

Component of the CCC complex, which is involved in the regulation of endosomal recycling of surface proteins, including integrins, signaling receptor and channels. The CCC complex associates with SNX17, retriever and WASH complexes to prevent lysosomal degradation and promote cell surface recycling of numerous cargos such as integrins ITGA5:ITGB1 (PubMed:<a href="http://www.uniprot.org/citations/28892079" target="\_blank">28892079</a>, PubMed:<a href="http://www.uniprot.org/citations/25355947" target="\_blank">25355947</a>). Involved in copper-dependent ATP7A trafficking between the trans-Golgi network and vesicles in the cell periphery; the function is proposed to depend on its association within the CCC complex and cooperation with the WASH complex on early endosomes and is dependent on its interaction with WASHC2C (PubMed:<a href="http://www.uniprot.org/citations/25355947" target="\_blank">25355947</a>).

**Cellular Location**

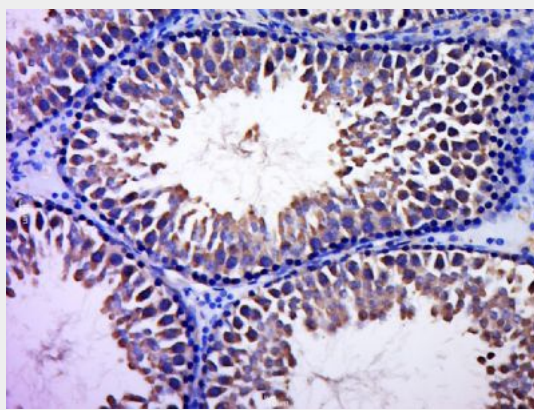
Early endosome.

## CCDC93 Polyclonal Antibody - Protocols

Provided below are standard protocols that you may find useful for product applications.

- [Western Blot](#)
- [Blocking Peptides](#)
- [Dot Blot](#)
- [Immunohistochemistry](#)
- [Immunofluorescence](#)
- [Immunoprecipitation](#)
- [Flow Cytometry](#)
- [Cell Culture](#)

## CCDC93 Polyclonal Antibody - Images



Paraformaldehyde-fixed, paraffin embedded (Rat testis); Antigen retrieval by boiling in sodium citrate buffer (pH6.0) for 15min; Block endogenous peroxidase by 3% hydrogen peroxide for 20 minutes; Blocking buffer (normal goat serum) at 37°C for 30min; Antibody incubation with (CCDC93) Polyclonal Antibody, Unconjugated (bs-8143R) at 1:400 overnight at 4°C, followed by a conjugated secondary (sp-0023) for 20 minutes and DAB staining.