

**FAM155A Polyclonal Antibody**  
**Purified Rabbit Polyclonal Antibody (Pab)**  
**Catalog # AP58925****Specification****FAM155A Polyclonal Antibody - Product Information**

Application	WB, IHC-P, IHC-F, IF, E
Primary Accession	<a href="#">B1AL88</a>
Reactivity	Rat, Pig, Dog, Bovine
Host	Rabbit
Clonality	Polyclonal
Calculated MW	51 KDa
Physical State	Liquid
Immunogen	KLH conjugated synthetic peptide derived from human FAM155A
Epitope Specificity	1-100/458
Isotype	IgG
<b>Purity</b>	
affinity purified by Protein A	
Buffer	0.01M TBS (pH7.4) with 1% BSA, 0.02% Proclin300 and 50% Glycerol.
Important Note	This product as supplied is intended for research use only, not for use in human, therapeutic or diagnostic applications.

**FAM155A Polyclonal Antibody - Additional Information****Gene ID** 728215**Other Names**

Transmembrane protein FAM155A, FAM155A

**Dilution**

WB~1:1000  
IHC-P~N/A  
IHC-F~N/A  
IF~1:50~200  
E~N/A

**Format**

0.01M TBS(pH7.4), 0.09% (W/V) sodium azide and 50% Glyce

**Storage**

Store at -20 °C for one year. Avoid repeated freeze/thaw cycles. When reconstituted in sterile pH 7.4 0.01M PBS or diluent of antibody the antibody is stable for at least two weeks at 2-4 °C.

**FAM155A Polyclonal Antibody - Protein Information**

**Name** NALF1 ([HGNC:33877](#))

**Synonyms** FAM155A, NLF-1

**Function**

Auxillary component of the NALCN sodium channel complex, a channel that regulates the resting membrane potential and controls neuronal excitability.

**Cellular Location**

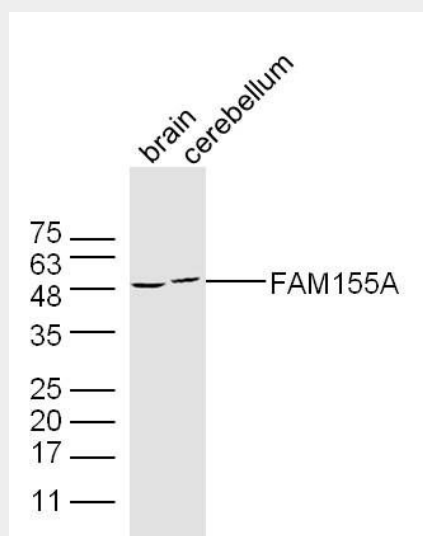
Cell membrane; Multi-pass membrane protein

**FAM155A Polyclonal Antibody - Protocols**

Provided below are standard protocols that you may find useful for product applications.

- [Western Blot](#)
- [Blocking Peptides](#)
- [Dot Blot](#)
- [Immunohistochemistry](#)
- [Immunofluorescence](#)
- [Immunoprecipitation](#)
- [Flow Cytometry](#)
- [Cell Culture](#)

**FAM155A Polyclonal Antibody - Images**



**Sample:**

Brain (Mouse) Lysate at 40 ug

Cerebellum (Mouse) Lysate at 40 ug

Primary: Anti-FAM155A (bs-8223R) at 1/300 dilution

Secondary: IRDye800CW Goat Anti-Rabbit IgG at 1/20000 dilution

Predicted band size: 51 kD

Observed band size: 51 kD