

**RUBCNL Antibody (Center)**  
**Affinity Purified Rabbit Polyclonal Antibody (Pab)**  
**Catalog # AP5893c**

**Specification**

---

**RUBCNL Antibody (Center) - Product Information**

Application	WB, FC,E
Primary Accession	<a href="#">O9H714</a>
Other Accession	<a href="#">NP_079389.2</a>
Reactivity	Human
Host	Rabbit
Clonality	Polyclonal
Isotype	Rabbit IgG
Antigen Region	379-405

**RUBCNL Antibody (Center) - Additional Information**

**Gene ID** 80183

**Other Names**

Uncharacterized protein KIAA0226-like, KIAA0226L, C13orf18

**Target/Specificity**

This C13orf18 antibody is generated from rabbits immunized with a KLH conjugated synthetic peptide between 379-405 amino acids from the Central region of human C13orf18.

**Dilution**

WB~~1:1000

FC~~1:10~50

E~~Use at an assay dependent concentration.

**Format**

Purified polyclonal antibody supplied in PBS with 0.09% (W/V) sodium azide. This antibody is purified through a protein A column, followed by peptide affinity purification.

**Storage**

Maintain refrigerated at 2-8°C for up to 2 weeks. For long term storage store at -20°C in small aliquots to prevent freeze-thaw cycles.

**Precautions**

RUBCNL Antibody (Center) is for research use only and not for use in diagnostic or therapeutic procedures.

**RUBCNL Antibody (Center) - Protein Information**

**Name** RUBCNL ([HGNC:20420](#))

**Function** Regulator of autophagy that promotes autophagosome maturation by facilitating the

biogenesis of phosphatidylinositol 3-phosphate (PtdIns(3)P) in late steps of autophagy (PubMed:[28306502](#), PubMed:[30704899](#)). Acts by antagonizing RUBCN, thereby stimulating phosphatidylinositol 3-kinase activity of the PI3K/PI3KC3 complex (PubMed:[28306502](#)). Following anchorage to the autophagosomal SNARE STX17, promotes the recruitment of PI3K/PI3KC3 and HOPS complexes to the autophagosome to regulate the fusion specificity of autophagosomes with late endosomes/lysosomes (PubMed:[28306502](#)). Binds phosphoinositides phosphatidylinositol 3-phosphate (PtdIns(3)P), 4- phosphate (PtdIns(4)P) and 5-phosphate (PtdIns(5)P) (PubMed:[28306502](#)). In addition to its role in autophagy, acts as a regulator of lipid and glycogen homeostasis (By similarity). May act as a tumor suppressor (Probable).

#### Cellular Location

Cytoplasmic vesicle, autophagosome membrane; Peripheral membrane protein. Note=Associates with late autophagic structure (PubMed:[28306502](#)). Recruitment to autophagosome membrane is promoted by autophagic stimuli (PubMed:[28306502](#))

#### Tissue Location

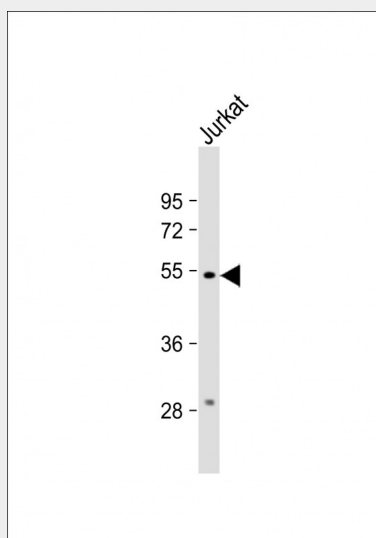
Expressed weakly in cervical carcinoma cell lines.

### RUBCNL Antibody (Center) - Protocols

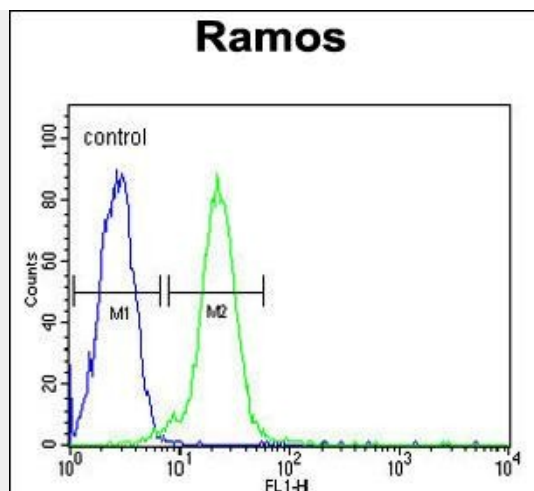
Provided below are standard protocols that you may find useful for product applications.

- [Western Blot](#)
- [Blocking Peptides](#)
- [Dot Blot](#)
- [Immunohistochemistry](#)
- [Immunofluorescence](#)
- [Immunoprecipitation](#)
- [Flow Cytometry](#)
- [Cell Culture](#)

### RUBCNL Antibody (Center) - Images



Anti-C13orf18 Antibody (Center) at 1:1000 dilution + Jurkat whole cell lysate Lysates/proteins at 20 µg per lane. Secondary Goat Anti-Rabbit IgG, (H+L), Peroxidase conjugated at 1/10000 dilution. Predicted band size : 73 kDa Blocking/Dilution buffer: 5% NFDM/TBST.



C13orf18 Antibody (Center) (Cat. #AP5893c) flow cytometric analysis of Ramos cells (right histogram) compared to a negative control cell (left histogram). FITC-conjugated goat-anti-rabbit secondary antibodies were used for the analysis.