

**CS Antibody (N-term)**  
**Affinity Purified Rabbit Polyclonal Antibody (Pab)**  
**Catalog # AP5894a****Specification**

---

**CS Antibody (N-term) - Product Information**

Application	IHC-P, FC, WB,E
Primary Accession	<a href="#">O75390</a>
Other Accession	<a href="#">P00889</a> , <a href="#">P0C1Z2</a> , <a href="#">P23007</a> , <a href="#">NP_004068.2</a>
Reactivity	Human
Predicted	Chicken, Monkey, Pig
Host	Rabbit
Clonality	Polyclonal
Isotype	Rabbit IgG
Calculated MW	51712
Antigen Region	27-55

**CS Antibody (N-term) - Additional Information****Gene ID** 1431**Other Names**

Citrate synthase, mitochondrial, Citrate (Si)-synthase, CS

**Target/Specificity**

This CS antibody is generated from rabbits immunized with a KLH conjugated synthetic peptide between 27-55 amino acids from the N-terminal region of human CS.

**Dilution**

IHC-P~~1:50~100

FC~~1:10~50

WB~~1:1000

E~~Use at an assay dependent concentration.

**Format**

Purified polyclonal antibody supplied in PBS with 0.09% (W/V) sodium azide. This antibody is purified through a protein A column, followed by peptide affinity purification.

**Storage**

Maintain refrigerated at 2-8°C for up to 2 weeks. For long term storage store at -20°C in small aliquots to prevent freeze-thaw cycles.

**Precautions**

CS Antibody (N-term) is for research use only and not for use in diagnostic or therapeutic procedures.

**CS Antibody (N-term) - Protein Information**

**Name** CS

**Function** Key enzyme of the Krebs tricarboxylic acid cycle which catalyzes the synthesis of citrate from acetyl coenzyme A and oxaloacetate.

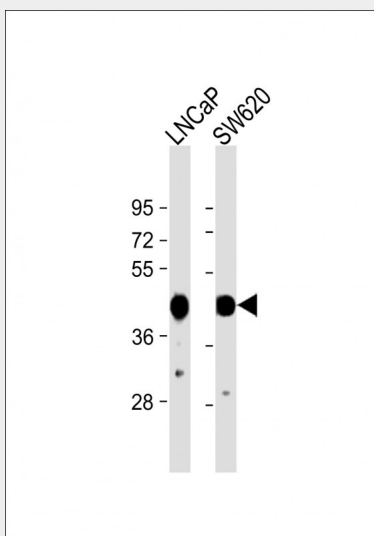
**Cellular Location**

Mitochondrion matrix {ECO:0000250|UniProtKB:P00889}

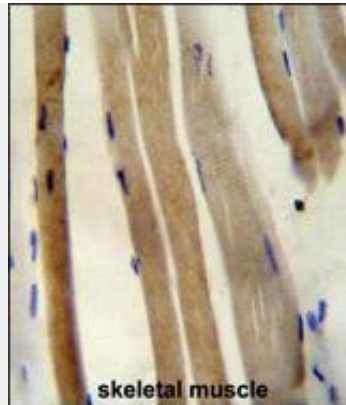
**CS Antibody (N-term) - Protocols**

Provided below are standard protocols that you may find useful for product applications.

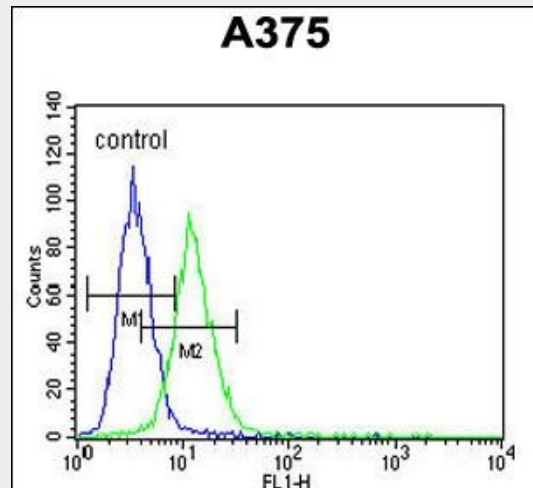
- [Western Blot](#)
- [Blocking Peptides](#)
- [Dot Blot](#)
- [Immunohistochemistry](#)
- [Immunofluorescence](#)
- [Immunoprecipitation](#)
- [Flow Cytometry](#)
- [Cell Culture](#)

**CS Antibody (N-term) - Images**

All lanes : Anti-CS Antibody (N-term) at 1:1000 dilution Lane 1: LNCaP whole cell lysate Lane 2: SW620 whole cell lysate Lysates/proteins at 20 µg per lane. Secondary Goat Anti-Rabbit IgG, (H+L), Peroxidase conjugated at 1/10000 dilution. Predicted band size : 52 kDa Blocking/Dilution buffer: 5% NFDM/TBST.



CS Antibody (N-term) (Cat. #AP5894a) immunohistochemistry analysis in formalin fixed and paraffin embedded human skeletal muscle followed by peroxidase conjugation of the secondary antibody and DAB staining. This data demonstrates the use of the CS Antibody (N-term) for immunohistochemistry. Clinical relevance has not been evaluated.



CS Antibody (N-term)(Cat. #AP5894a) flow cytometric analysis of A375 cells (right histogram) compared to a negative control cell (left histogram).FITC-conjugated goat-anti-rabbit secondary antibodies were used for the analysis.

#### CS Antibody (N-term) - Citations

- [Mitochondrial transplantation reduces lower limb ischemia-reperfusion injury by increasing skeletal muscle energy and adipocyte browning](#)