

GIMAP8 Polyclonal Antibody
Purified Rabbit Polyclonal Antibody (Pab)
Catalog # AP58950**Specification**

GIMAP8 Polyclonal Antibody - Product Information

Application	WB
Primary Accession	Q8ND71
Reactivity	Rat
Host	Rabbit
Clonality	Polyclonal
Calculated MW	74890

GIMAP8 Polyclonal Antibody - Additional Information**Gene ID** 155038**Other Names**

GTPase IMAP family member 8, Immune-associated nucleotide-binding protein 9, IAN-9, Protein Iant, GIMAP8, IAN9, IANT

Format

0.01M TBS(pH7.4), 0.09% (W/V) sodium azide and 50% Glyce

Storage

Store at -20 °C for one year. Avoid repeated freeze/thaw cycles. When reconstituted in sterile pH 7.4 0.01M PBS or diluent of antibody the antibody is stable for at least two weeks at 2-4 °C.

GIMAP8 Polyclonal Antibody - Protein Information**Name** GIMAP8**Synonyms** IAN9, IANT**Function**

Exerts an anti-apoptotic effect in the immune system and is involved in responses to infections.

Cellular Location

Endoplasmic reticulum {ECO:0000250|UniProtKB:Q75N62}. Golgi apparatus {ECO:0000250|UniProtKB:Q75N62}. Mitochondrion {ECO:0000250|UniProtKB:Q75N62}. Cytoplasm, cytosol

Tissue Location

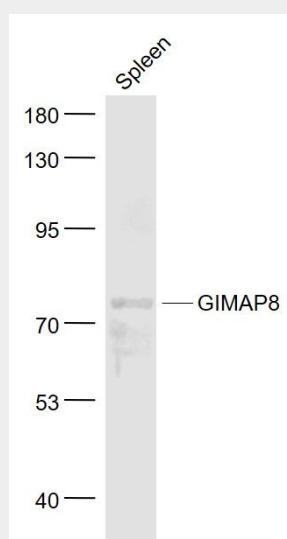
Expressed in the spleen, intestine, liver, and colon, as well as in lung, placenta, kidney, muscle, and heart Extremely low expression, if any, in brain, in thymus, bone marrow, and blood leukocytes (PubMed:15474311). Detected in T-cells (PubMed:23454188).

GIMAP8 Polyclonal Antibody - Protocols

Provided below are standard protocols that you may find useful for product applications.

- [Western Blot](#)
- [Blocking Peptides](#)
- [Dot Blot](#)
- [Immunohistochemistry](#)
- [Immunofluorescence](#)
- [Immunoprecipitation](#)
- [Flow Cytometry](#)
- [Cell Culture](#)

GIMAP8 Polyclonal Antibody - Images



Sample:

Spleen (Mouse) Lysate at 40 ug

Primary: Anti- GIMAP8 (bs-8274R) at 1/1000 dilution

Secondary: IRDye800CW Goat Anti-Rabbit IgG at 1/20000 dilution

Predicted band size: 75 kD

Observed band size: 75 kD