

IL24 Antibody (C-term)
Affinity Purified Rabbit Polyclonal Antibody (Pab)
Catalog # AP5896b**Specification**

IL24 Antibody (C-term) - Product Information

| | |
|-------------------|--|
| Application | WB,E |
| Primary Accession | Q13007 |
| Other Accession | NP_001172085.1 , NP_006841.1 |
| Reactivity | Human |
| Host | Rabbit |
| Clonality | Polyclonal |
| Isotype | Rabbit IgG |
| Calculated MW | 23825 |
| Antigen Region | 139-168 |

IL24 Antibody (C-term) - Additional Information**Gene ID** 11009**Other Names**

Interleukin-24, IL-24, Melanoma differentiation-associated gene 7 protein, MDA-7, Suppression of tumorigenicity 16 protein, IL24, MDA7, ST16

Target/Specificity

This IL24 antibody is generated from rabbits immunized with a KLH conjugated synthetic peptide between 139-168 amino acids from the C-terminal region of human IL24.

Dilution

WB~~1:1000

E~~Use at an assay dependent concentration.

Format

Purified polyclonal antibody supplied in PBS with 0.09% (W/V) sodium azide. This antibody is purified through a protein A column, followed by peptide affinity purification.

Storage

Maintain refrigerated at 2-8°C for up to 2 weeks. For long term storage store at -20°C in small aliquots to prevent freeze-thaw cycles.

Precautions

IL24 Antibody (C-term) is for research use only and not for use in diagnostic or therapeutic procedures.

IL24 Antibody (C-term) - Protein Information**Name** IL24

Synonyms MDA7, ST16

Function Multifunctional cytokine mainly produced by T-cells that plays a regulatory role in immune response, tissue homeostasis, host defense, and oncogenesis (PubMed:[25168428](#), PubMed:[27687232](#)). Possesses antiviral functions and induces the type I interferon response during influenza infection (PubMed:[27687232](#)). Signals through two receptor complexes IL20RA/IL20RB or IL20RB/IL22RA1 (PubMed:[11706020](#), PubMed:[30111632](#)). In turn, stimulates the JAK1-STAT3 and MAPK pathways and promotes the secretion of pro-inflammatory mediators including IL8 and MMP1 (PubMed:[25168428](#)). Intracellularly, maintains endoplasmic reticulum homeostasis by restricting the eIF2alpha-CHOP pathway- mediated stress signal (By similarity). In addition, acts as a quality control mechanism for the ubiquitin proteasome system by alerting the cell to proteasome dysfunction through activation of PKR/EIF2AK2 (By similarity).

Cellular Location

Secreted.

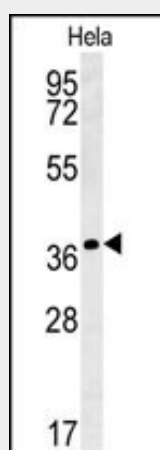
Tissue Location

Up-regulated in melanoma cells induced to terminally differentiate

IL24 Antibody (C-term) - Protocols

Provided below are standard protocols that you may find useful for product applications.

- [Western Blot](#)
- [Blocking Peptides](#)
- [Dot Blot](#)
- [Immunohistochemistry](#)
- [Immunofluorescence](#)
- [Immunoprecipitation](#)
- [Flow Cytometry](#)
- [Cell Culture](#)

IL24 Antibody (C-term) - Images

IL24 Antibody (C-term) (Cat. #AP5896b) western blot analysis in HeLa cell line lysates (35ug/lane). This demonstrates the IL24 antibody detected the IL24 protein (arrow).