

**GCOM1/GRINL1A Polyclonal Antibody**  
**Purified Rabbit Polyclonal Antibody (Pab)**  
**Catalog # AP58991****Specification**

---

**GCOM1/GRINL1A Polyclonal Antibody - Product Information**

Application	WB, IHC-P, IHC-F, IF, E
Primary Accession	<a href="#">POCAP2</a>
Reactivity	Rat, Bovine
Host	Rabbit
Clonality	Polyclonal
Calculated MW	41740

**GCOM1/GRINL1A Polyclonal Antibody - Additional Information****Gene ID** 81488**Other Names**

DNA-directed RNA polymerase II subunit GRINL1A, DNA-directed RNA polymerase II subunit M, Glutamate receptor-like protein 1A, POLR2M, GRINL1A

**Dilution**

<span class = "dilution\_WB">WB~~1:1000</span><br \><span class = "dilution\_IHC-P">IHC-P~~N/A</span><br \><span class = "dilution\_IHC-F">IHC-F~~N/A</span><br \><span class = "dilution\_IF">IF~~1:50~200</span><br \><span class = "dilution\_E">E~~N/A</span>

**Format**

0.01M TBS(pH7.4), 0.09% (W/V) sodium azide and 50% Glyce

**Storage**

Store at -20 °C for one year. Avoid repeated freeze/thaw cycles. When reconstituted in sterile pH 7.4 0.01M PBS or diluent of antibody the antibody is stable for at least two weeks at 2-4 °C.

**GCOM1/GRINL1A Polyclonal Antibody - Protein Information****Name** POLR2M**Synonyms** GRINL1A**Function**

[Isoform 1]: Appears to be a stable component of the Pol II(G) complex form of RNA polymerase II (Pol II). Pol II synthesizes mRNA precursors and many functional non-coding RNAs and is the central component of the basal RNA polymerase II transcription machinery. May play a role in the Mediator complex-dependent regulation of transcription activation. Acts as a negative regulator of transcriptional activation; this repression is relieved by the Mediator complex, which restores Pol II(G) activator-dependent transcription to a level equivalent to that of Pol II.

**Cellular Location**

[Isoform 1]: Nucleus.

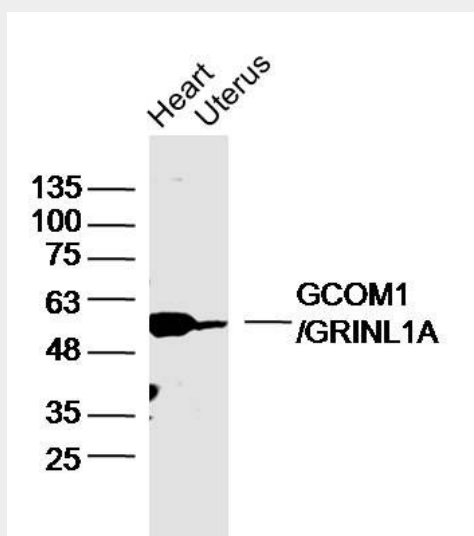
**Tissue Location**

Detected in adult an fetal brain. Detected in heart, kidney, skeletal muscle, small intestine, lung, prostate and testis.

**GCOM1/GRINL1A Polyclonal Antibody - Protocols**

Provided below are standard protocols that you may find useful for product applications.

- [Western Blot](#)
- [Blocking Peptides](#)
- [Dot Blot](#)
- [Immunohistochemistry](#)
- [Immunofluorescence](#)
- [Immunoprecipitation](#)
- [Flow Cytometry](#)
- [Cell Culture](#)

**GCOM1/GRINL1A Polyclonal Antibody - Images****Sample:**

Heart (Mouse)Lysate at 40 ug

Uterus (Mouse)Lysate at 40 ug

Primary: Anti-GCOM1'GRINL1A(bs-8403R)at 1/300 dilution

Secondary: IRDye800CW Goat Anti-RabbitIgG at 1/20000 dilution

Predicted band size: 62kD

Observed band size: 62kD