

FbxL12 Polyclonal Antibody
Purified Rabbit Polyclonal Antibody (Pab)
Catalog # AP59012**Specification****FbxL12 Polyclonal Antibody - Product Information**

Application	WB, IHC-P, IHC-F, IF, E
Primary Accession	Q9NXK8
Reactivity	Rat, Pig, Dog, Bovine
Host	Rabbit
Clonality	Polyclonal
Calculated MW	37 KDa
Physical State	Liquid
Immunogen	KLH conjugated synthetic peptide derived from human FbxL12
Epitope Specificity	171-270/326
Isotype	IgG
Purity	
affinity purified by Protein A	
Buffer	0.01M TBS (pH7.4) with 1% BSA, 0.02% Proclin300 and 50% Glycerol.
SIMILARITY	Contains 1 F-box domain. Contains 8 LRR (leucine-rich) repeats.
SUBUNIT	Interacts with SKP1 and CUL1 (By similarity).
Important Note	This product as supplied is intended for research use only, not for use in human, therapeutic or diagnostic applications.

Background Descriptions

F-box proteins are critical components of the SCF (Skp1-CUL-1-F-box protein) type E3 ubiquitin ligase complex and are involved in substrate recognition and recruitment for ubiquitination. They are members of a larger family of proteins that are involved in the regulation of a wide variety of cellular processes (including the cell cycle, immune responses, signaling cascades and developmental events) through the targeting of proteins, such as cyclins, cyclin-dependent kinase inhibitors, I κ B- α and β -catenin, for proteasomal degradation. FBL12 (F-box and leucine-rich repeat protein 12), also designated FBXL12, is a 326 amino acid protein that contains one F-box domain, five LRR (leucine-rich) repeats and exists as two alternatively spliced isoforms. FBL12 interacts with both Skp1 and CUL-1, and is encoded by a gene that maps to human chromosome 19p13.2.

FbxL12 Polyclonal Antibody - Additional Information**Gene ID** 54850**Other Names**

F-box/LRR-repeat protein 12, F-box and leucine-rich repeat protein 12, F-box protein FBL12, FBXL12, FBL12

Dilution

WB~~1:1000<br \><span class
="dilution_IHC-P">IHC-P~~N/A<br \><span class
="dilution_IHC-F">IHC-F~~N/A<br \><span class
="dilution_IF">IF~~1:50~200<br \>E~~N/A

Storage

Store at -20 °C for one year. Avoid repeated freeze/thaw cycles. When reconstituted in sterile pH 7.4 0.01M PBS or diluent of antibody the antibody is stable for at least two weeks at 2-4 °C.

FbxL12 Polyclonal Antibody - Protein Information

Name FBXL12

Synonyms FBL12

Function

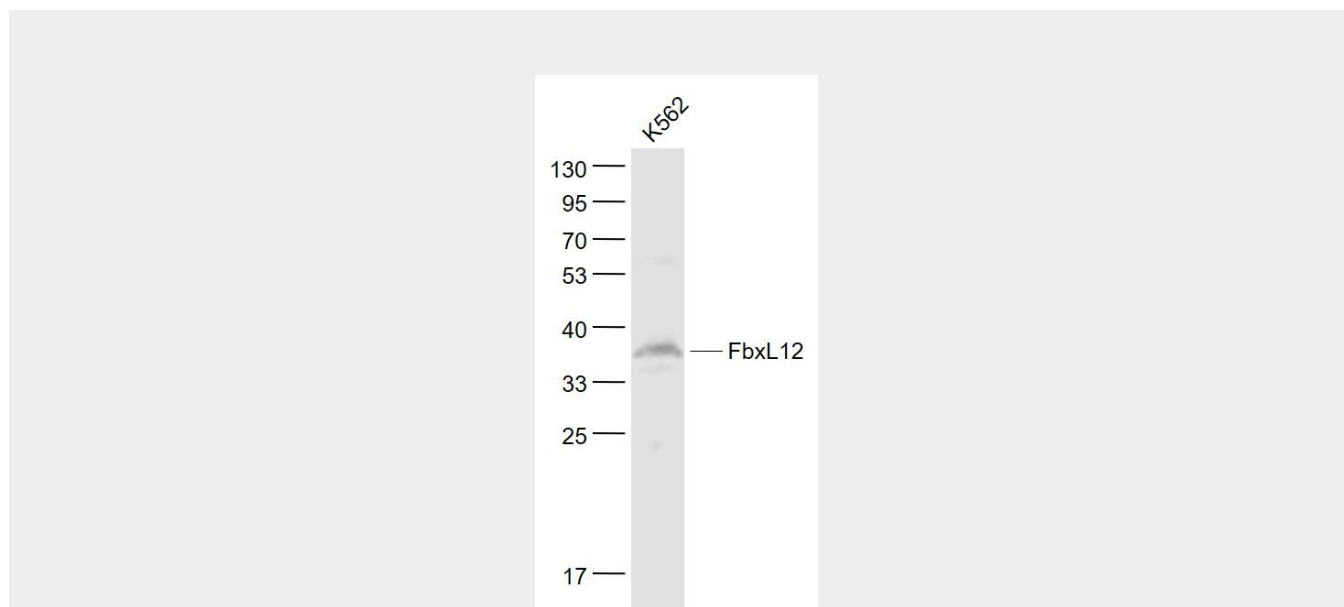
Substrate-recognition component of the SCF (SKP1-CUL1-F-box protein)-type E3 ubiquitin ligase complex. Mediates the polyubiquitination and proteasomal degradation of CAMK1 leading to disruption of cyclin D1/CDK4 complex assembly which results in G1 cell cycle arrest in lung epithelia.

FbxL12 Polyclonal Antibody - Protocols

Provided below are standard protocols that you may find useful for product applications.

- [Western Blot](#)
- [Blocking Peptides](#)
- [Dot Blot](#)
- [Immunohistochemistry](#)
- [Immunofluorescence](#)
- [Immunoprecipitation](#)
- [Flow Cytometry](#)
- [Cell Culture](#)

FbxL12 Polyclonal Antibody - Images



Sample:

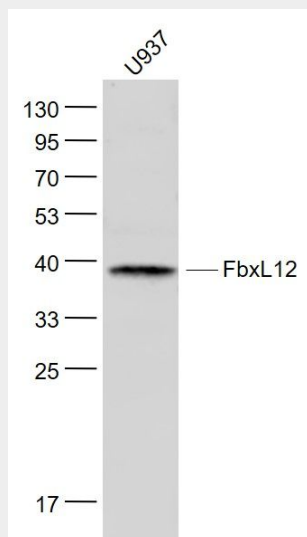
K562(Human) Cell Lysate at 30 ug

Primary: Anti- FbxL12 (bs-8466R) at 1/1000 dilution

Secondary: IRDye800CW Goat Anti-Rabbit IgG at 1/20000 dilution

Predicted band size: 37 kD

Observed band size: 37 kD

**Sample:**

U937(Human) Cell Lysate at 30 ug

Primary: Anti- FbxL12 (bs-8466R) at 1/1000 dilution

Secondary: IRDye800CW Goat Anti-Rabbit IgG at 1/20000 dilution

Predicted band size: 37 kD

Observed band size: 37 kD