

RFESD Polyclonal Antibody
Purified Rabbit Polyclonal Antibody (Pab)
Catalog # AP59019

Specification

RFESD Polyclonal Antibody - Product Information

Application	WB, IHC-P, IHC-F, IF, E
Primary Accession	Q8TAC1
Reactivity	Rat
Host	Rabbit
Clonality	Polyclonal
Calculated MW	18 KDa
Physical State	Liquid
Immunogen	KLH conjugated synthetic peptide derived from human RFESD
Epitope Specificity	51-157/157
Isotype	IgG
Purity	
affinity purified by Protein A	
Buffer	0.01M TBS (pH7.4) with 1% BSA, 0.02% Proclin300 and 50% Glycerol.
SIMILARITY	Contains 2 Rieske domains.
Important Note	This product as supplied is intended for research use only, not for use in human, therapeutic or diagnostic applications.

Background Descriptions

RFESD, also known as Rieske domain-containing protein, is a 157 amino acid protein that binds one 2Fe-2S cluster per subunit. Involved in metal ion binding, RFESD contains one Rieske domain. The RFESD gene is conserved in chimpanzee, dog, cow, mouse, rat, chicken and zebrafish, and maps to human chromosome 5q15. Chromosome 5 makes up approximately 6% of the human genome and contains 181 million base pairs, which encode 1,000 genes. Chromosome 5 is associated with Cockayne syndrome through the ERCC8 gene and familial adenomatous polyposis through the adenomatous polyposis coli (APC) tumor suppressor gene. Treacher Collins syndrome is caused by insertions or deletions within the TCOF1 gene and is also associated with chromosome 5. Deletion of 5q or chromosome 5 altogether is common in therapy-related acute myelogenous leukemias and myelodysplastic syndrome.

RFESD Polyclonal Antibody - Additional Information

Gene ID 317671

Other Names

Rieske domain-containing protein, RFESD

Dilution

WB~~1:1000<br \>IHC-P~~N/A<br \>IHC-F~~N/A<br \><span class =

=<div class="dilution_IF">IF~1:50~200</div>
<div class="dilution_E">E~N/A</div>

Format

0.01M TBS(pH7.4), 0.09% (W/V) sodium azide and 50% Glyce

Storage

Store at -20 °C for one year. Avoid repeated freeze/thaw cycles. When reconstituted in sterile pH 7.4 0.01M PBS or diluent of antibody the antibody is stable for at least two weeks at 2-4 °C.

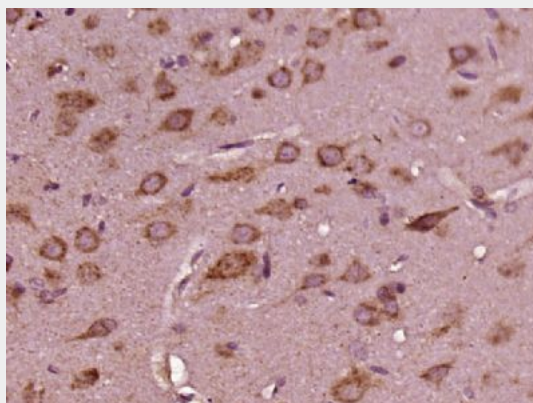
RFESD Polyclonal Antibody - Protein Information

Name RFESD

RFESD Polyclonal Antibody - Protocols

Provided below are standard protocols that you may find useful for product applications.

- [Western Blot](#)
- [Blocking Peptides](#)
- [Dot Blot](#)
- [Immunohistochemistry](#)
- [Immunofluorescence](#)
- [Immunoprecipitation](#)
- [Flow Cytometry](#)
- [Cell Culture](#)

RFESD Polyclonal Antibody - Images

Paraformaldehyde-fixed, paraffin embedded (rat brain tissue); Antigen retrieval by boiling in sodium citrate buffer (pH6.0) for 15min; Block endogenous peroxidase by 3% hydrogen peroxide for 20 minutes; Blocking buffer (normal goat serum) at 37°C for 30min; Antibody incubation with (RFESD) Polyclonal Antibody, Unconjugated (bs-8496R) at 1:400 overnight at 4°C, followed by operating according to SP Kit(Rabbit) (sp-0023) instructions and DAB staining.