

Desmuslin Polyclonal Antibody
Purified Rabbit Polyclonal Antibody (Pab)
Catalog # AP59036**Specification**

Desmuslin Polyclonal Antibody - Product Information

Application	IHC-P, IHC-F, IF, E
Primary Accession	O15061
Reactivity	Rat, Pig, Bovine
Host	Rabbit
Clonality	Polyclonal
Calculated MW	172868

Desmuslin Polyclonal Antibody - Additional Information**Gene ID** 23336**Other Names**

Synemin, Desmuslin, SYNM, DMN, KIAA0353, SYN

Dilution

IHC-P~~N/A<br \>IHC-F~~N/A<br \>IF~~1:50~200<br \>E~~N/A

Format

0.01M TBS(pH7.4), 0.09% (W/V) sodium azide and 50% Glyce

Storage

Store at -20 °C for one year. Avoid repeated freeze/thaw cycles. When reconstituted in sterile pH 7.4 0.01M PBS or diluent of antibody the antibody is stable for at least two weeks at 2-4 °C.

Desmuslin Polyclonal Antibody - Protein Information**Name** SYNM ([HGNC:24466](#))**Synonyms** DMN, KIAA0353, SYN**Function**

Type-VI intermediate filament (IF) which plays an important cytoskeletal role within the muscle cell cytoskeleton. It forms heteromeric IFs with desmin and/or vimentin, and via its interaction with cytoskeletal proteins alpha-dystrobrevin, dystrophin, talin-1, utrophin and vinculin, is able to link these heteromeric IFs to adherens-type junctions, such as to the costameres, neuromuscular junctions, and myotendinous junctions within striated muscle cells.

Cellular Location

Cytoplasm, cytoskeleton. Cell junction, adherens junction. Note=There are at least two distinct SYNM subpopulations, one in which SYMN interacts with DES within the Z-lines, and another in

which it interacts with both DTNA and DES at the costamere

Tissue Location

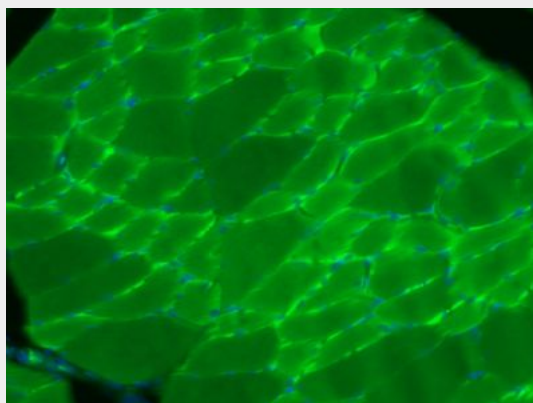
Isoform 2 is strongly detected in adult heart, fetal skeletal muscles and fetal heart. Isoform 1 is weakly detected in fetal heart and also in fetal skeletal muscle. Isoform 1 and isoform 2 are detected in adult bladder (at protein level). The mRNA is predominantly expressed in heart and muscle with some expression in brain which may be due to tissue-specific isoforms

Desmuslin Polyclonal Antibody - Protocols

Provided below are standard protocols that you may find useful for product applications.

- [Western Blot](#)
- [Blocking Peptides](#)
- [Dot Blot](#)
- [Immunohistochemistry](#)
- [Immunofluorescence](#)
- [Immunoprecipitation](#)
- [Flow Cytometry](#)
- [Cell Culture](#)

Desmuslin Polyclonal Antibody - Images



Paraformaldehyde-fixed, paraffin embedded (Rat skeletal muscle); Antigen retrieval by boiling in sodium citrate buffer (pH6.0) for 15min; Block endogenous peroxidase by 3% hydrogen peroxide for 20 minutes; Blocking buffer (normal goat serum) at 37°C for 30min; Antibody incubation with (Desmuslin) Polyclonal Antibody, Unconjugated (bs-8555R) at 1:400 overnight at 4°C, followed by a conjugated Goat Anti-Rabbit IgG antibody (bs-0295G-FITC) for 90 minutes, and DAPI for nuclei staining.