

GNAI2/G protein alpha inhibitor 1 Polyclonal Antibody
Purified Rabbit Polyclonal Antibody (Pab)
Catalog # AP59037**Specification****GNAI2/G protein alpha inhibitor 1 Polyclonal Antibody - Product Information**

Application	IHC-P, IHC-F, IF, ICC, E
Primary Accession	P04899
Reactivity	Rat, Dog, Bovine
Host	Rabbit
Clonality	Polyclonal
Calculated MW	40 KDa
Physical State	Liquid
Immunogen	KLH conjugated synthetic peptide derived from human G Protein alpha Inhibitor 1
Epitope Specificity	265-355/355
Isotype	IgG
Purity	
affinity purified by Protein A	
Buffer	0.01M TBS (pH7.4) with 1% BSA, 0.02% Proclin300 and 50% Glycerol.
SUBCELLULAR LOCATION	Cytoplasm. Cytoplasm, cytoskeleton, centrosome. Cell membrane. Note=Localizes in the centrosomes of interphase and mitotic cells. Detected at the cleavage furrow and/or the midbody. Belongs to the G-alpha family. G(i/o/t/z) subfamily.
SIMILARITY	
SUBUNIT	G proteins are composed of 3 units; alpha, beta and gamma. The alpha chain contains the guanine nucleotide binding site. Interacts with GPSM1. Interacts with RGS12 and RGS14. Interacts with UNC5B.
Important Note	This product as supplied is intended for research use only, not for use in human, therapeutic or diagnostic applications.

Background Descriptions

The G protein family of signal transducers includes 5 heterotrimers, which are most clearly distinguished by their different alpha chains; they have virtually identical beta chains and similar gamma chains. G protein alpha inhibitor chains 1 and 2 are subunits of the G(i) G protein, whose role is in inhibiting adenylate cyclase activity in response to bound GTP.

GNAI2/G protein alpha inhibitor 1 Polyclonal Antibody - Additional Information**Gene ID 2771****Other Names**

Guanine nucleotide-binding protein G(i) subunit alpha-2, Adenylate cyclase-inhibiting G alpha

protein, GNAI2, GNAI2B

Dilution

IHC-P ~ N/A
IHC-F ~ N/A
IF ~ 1:50 ~ 200
ICC ~ N/A
E ~ N/A

Format

0.01M TBS(pH7.4), 0.09% (W/V) sodium azide and 50% Glyce

Storage

Store at -20 °C for one year. Avoid repeated freeze/thaw cycles. When reconstituted in sterile pH 7.4 0.01M PBS or diluent of antibody the antibody is stable for at least two weeks at 2-4 °C.

GNAI2/G protein alpha inhibitor 1 Polyclonal Antibody - Protein Information

Name GNAI2

Synonyms GNAI2B

Function

Guanine nucleotide-binding proteins (G proteins) are involved as modulators or transducers in various transmembrane signaling systems. The G(i) proteins are involved in hormonal regulation of adenylate cyclase: they inhibit the cyclase in response to beta- adrenergic stimuli. May play a role in cell division.

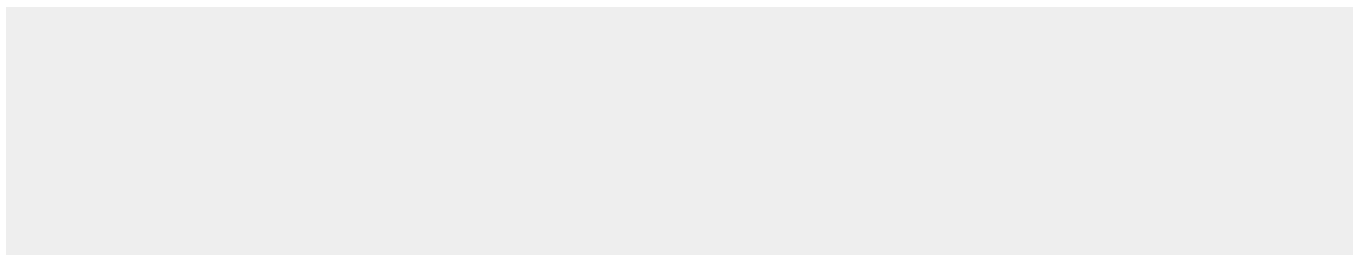
Cellular Location

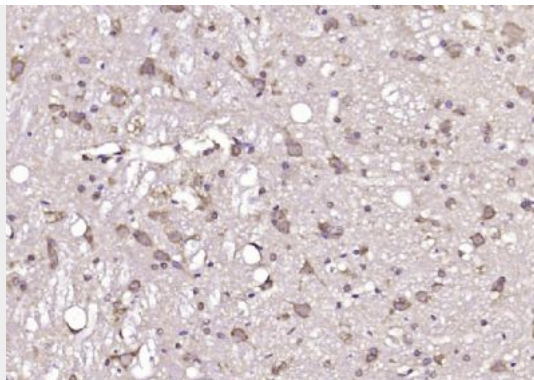
Cytoplasm. Cytoplasm, cytoskeleton, microtubule organizing center, centrosome. Cell membrane. Membrane; Lipid-anchor. Note=Localizes in the centrosomes of interphase and mitotic cells. Detected at the cleavage furrow and/or the midbody

GNAI2/G protein alpha inhibitor 1 Polyclonal Antibody - Protocols

Provided below are standard protocols that you may find useful for product applications.

- [Western Blot](#)
- [Blocking Peptides](#)
- [Dot Blot](#)
- [Immunohistochemistry](#)
- [Immunofluorescence](#)
- [Immunoprecipitation](#)
- [Flow Cytometry](#)
- [Cell Culture](#)

GNAI2/G protein alpha inhibitor 1 Polyclonal Antibody - Images



Paraformaldehyde-fixed, paraffin embedded (rat brain); Antigen retrieval by boiling in sodium citrate buffer (pH6.0) for 15min; Block endogenous peroxidase by 3% hydrogen peroxide for 20 minutes; Blocking buffer (normal goat serum) at 37°C for 30min; Antibody incubation with (GNAI2 G protein alpha inhibitor 1) Polyclonal Antibody, Unconjugated (bs-8556R) at 1:200 overnight at 4°C, followed by operating according to SP Kit(Rabbit) (sp-0023) instructions and DAB staining.