

PDE3B Polyclonal Antibody
Purified Rabbit Polyclonal Antibody (Pab)
Catalog # AP59050

Specification

PDE3B Polyclonal Antibody - Product Information

Application	WB, IHC-P, IHC-F, IF, ICC, E
Primary Accession	Q13370
Reactivity	Rat, Pig, Dog
Host	Rabbit
Clonality	Polyclonal
Calculated MW	124 KDa
Physical State	Liquid
Immunogen	KLH conjugated synthetic peptide derived from human PDE3B
Epitope Specificity	451-550/1112
Isotype	IgG
Purity	
affinity purified by Protein A	
Buffer	0.01M TBS (pH7.4) with 1% BSA, 0.02% Proclin300 and 50% Glycerol.
SUBCELLULAR LOCATION	Membrane.
SIMILARITY	Belongs to the cyclic nucleotide phosphodiesterase family. PDE3 subfamily.
Important Note	This product as supplied is intended for research use only, not for use in human, therapeutic or diagnostic applications.

Background Descriptions

PDE3B is found in lymphocytes. The PDE7A1 (HCP1) isozyme and the PDE7A2 proteins, alternate splice products of PDE7A, are highly expressed in skeletal muscle. PDE7B is most highly expressed in pancreas. The PDE family contains proteins that serve tissue-specific roles in regulation of lipolysis, glycogenolysis, myocardial contractility, and smooth muscle relaxation.

PDE3B Polyclonal Antibody - Additional Information

Gene ID 5140

Other Names

cGMP-inhibited 3', 5'-cyclic phosphodiesterase B, 3.1.4.17, CGIPDE1, CGIP1, Cyclic GMP-inhibited phosphodiesterase B, CGI-PDE B, PDE3B

Target/Specificity

Abundant in adipose tissues.

Dilution

WB~~1:1000<br \>IHC-P~~N/A<br \>IHC-F~~N/A<br \><span class

="dilution_IF">IF~1:50~200<br \>

Format

0.01M TBS(pH7.4), 0.09% (W/V) sodium azide and 50% Glyce

Storage

Store at -20 °C for one year. Avoid repeated freeze/thaw cycles. When reconstituted in sterile pH 7.4 0.01M PBS or diluent of antibody the antibody is stable for at least two weeks at 2-4 °C.

PDE3B Polyclonal Antibody - Protein Information

Name PDE3B ([HGNC:8779](#))

Function

Cyclic nucleotide phosphodiesterase with a dual-specificity for the second messengers cAMP and cGMP, which are key regulators of many important physiological process (PubMed:14592490, PubMed:21393242). Regulates angiogenesis by inhibiting the cAMP- dependent guanine nucleotide exchange factor RAPGEF3 and downstream phosphatidylinositol 3-kinase gamma-mediated signaling (PubMed:21393242). Controls cardiac contractility by reducing cAMP concentration in cardiocytes (By similarity).

Cellular Location

Membrane {ECO:0000250|UniProtKB:Q61409}; Multi- pass membrane protein

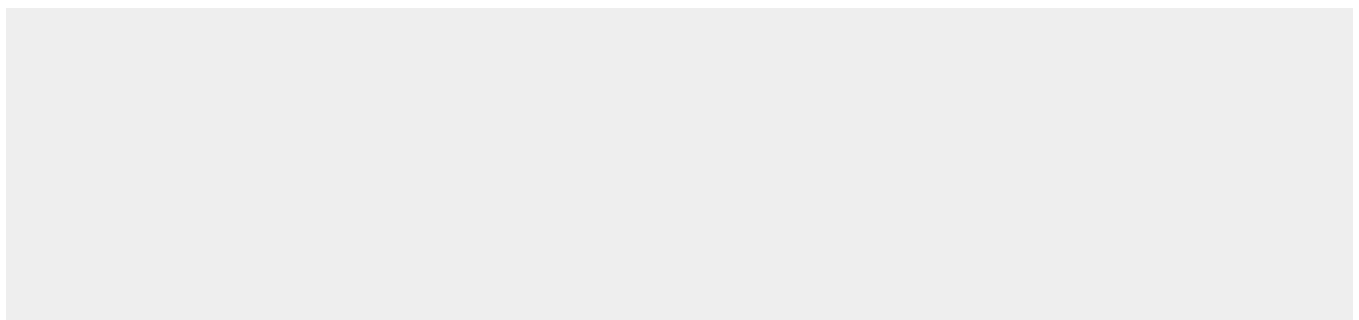
Tissue Location

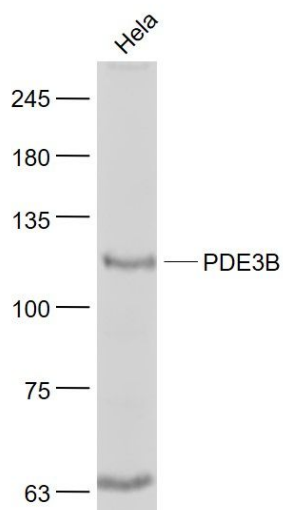
Abundant in adipose tissues.

PDE3B Polyclonal Antibody - Protocols

Provided below are standard protocols that you may find useful for product applications.

- [Western Blot](#)
- [Blocking Peptides](#)
- [Dot Blot](#)
- [Immunohistochemistry](#)
- [Immunofluorescence](#)
- [Immunoprecipitation](#)
- [Flow Cytometry](#)
- [Cell Culture](#)

PDE3B Polyclonal Antibody - Images

**Sample:**

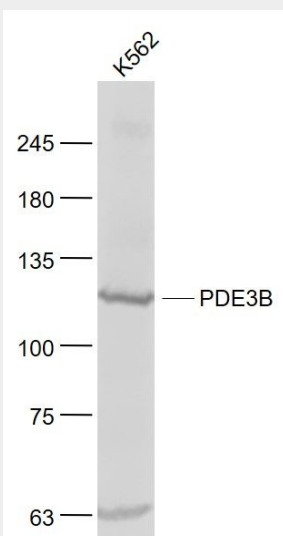
HeLa(Human) Cell Lysate at 30 ug

Primary: Anti- PDE3B (bs-8621R) at 1/1000 dilution

Secondary: IRDye800CW Goat Anti-Rabbit IgG at 1/20000 dilution

Predicted band size: 124 kD

Observed band size: 124 kD

**Sample:**

K562(Human) Cell Lysate at 30 ug

Primary: Anti- PDE3B (bs-8621R) at 1/1000 dilution

Secondary: IRDye800CW Goat Anti-Rabbit IgG at 1/20000 dilution

Predicted band size: 124 kD

Observed band size: 124 kD