

**RELL2 Polyclonal Antibody**  
**Purified Rabbit Polyclonal Antibody (Pab)**  
**Catalog # AP59063****Specification****RELL2 Polyclonal Antibody - Product Information**

Application	WB, IHC-P, IHC-F, IF, ICC, E
Primary Accession	<a href="#">Q8NC24</a>
Reactivity	Rat, Pig, Dog, Bovine
Host	Rabbit
Clonality	Polyclonal
Calculated MW	32 KDa
Physical State	Liquid
Immunogen	KLH conjugated synthetic peptide derived from human REL2
Epitope Specificity	101-200/303
Isotype	IgG
<b>Purity</b>	
affinity purified by Protein A	
Buffer	<b>Preservative: 0.02% Proclin300,</b> <b>Constituents: 1% BSA, 0.01M PBS, pH7.4.</b>
SUBCELLULAR LOCATION	Cell membrane.
SIMILARITY	Belongs to the RELT family.
Post-translational modifications	Phosphorylated in vitro by OXSR1.
Important Note	This product as supplied is intended for research use only, not for use in human, therapeutic or diagnostic applications.

**RELL2 Polyclonal Antibody - Additional Information****Gene ID** 285613**Other Names**

RELT-like protein 2, REL2, C5orf16

**Target/Specificity**

Primarily expressed in spleen, thymus, testis, peripheral blood leukocytes, brain and placenta. Not detected in prostate, ovary, small intestine, colon, heart, lung, liver, skeletal muscle, kidney and pancreas.

**Dilution**

WB~1:1000  
IHC-P~N/A  
IHC-F~N/A  
IF~1:50~200  
ICC~N/A  
E~N/A

**Storage**

Store at -20 °C for one year. Avoid repeated freeze/thaw cycles. When reconstituted in sterile pH

7.4 0.01M PBS or diluent of antibody the antibody is stable for at least two weeks at 2-4 °C.

## **RELL2 Polyclonal Antibody - Protein Information**

**Name** RELL2

**Synonyms** C5orf16

### **Function**

Induces activation of MAPK14/p38 cascade, when overexpressed (PubMed:<a href="http://www.uniprot.org/citations/28688764" target="\_blank">28688764</a>). Induces apoptosis, when overexpressed (PubMed:<a href="http://www.uniprot.org/citations/19969290" target="\_blank">19969290</a>).

### **Cellular Location**

Cell membrane; Single-pass membrane protein

### **Tissue Location**

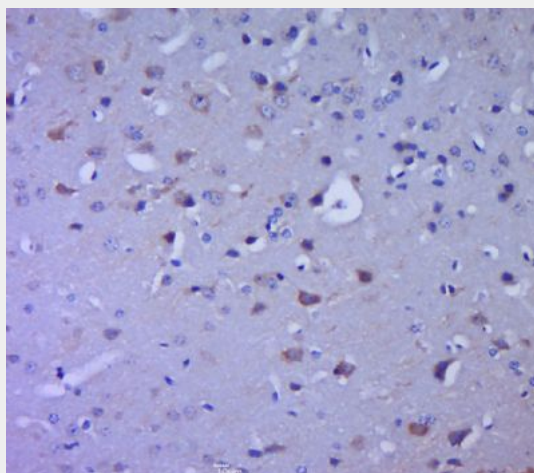
Primarily expressed in spleen, thymus, testis, peripheral blood leukocytes, brain and placenta. Not detected in prostate, ovary, small intestine, colon, heart, lung, liver, skeletal muscle, kidney and pancreas.

## **RELL2 Polyclonal Antibody - Protocols**

Provided below are standard protocols that you may find useful for product applications.

- [Western Blot](#)
- [Blocking Peptides](#)
- [Dot Blot](#)
- [Immunohistochemistry](#)
- [Immunofluorescence](#)
- [Immunoprecipitation](#)
- [Flow Cytometry](#)
- [Cell Culture](#)

## **RELL2 Polyclonal Antibody - Images**



Paraformaldehyde-fixed, paraffin embedded (mouse brain tissue); Antigen retrieval by boiling in sodium citrate buffer (pH6.0) for 15min; Block endogenous peroxidase by 3% hydrogen peroxide for 20 minutes; Blocking buffer (normal goat serum) at 37°C for 30min; Antibody incubation with (RELL2) Polyclonal Antibody, Unconjugated (bs-8694R) at 1:400 overnight at 4°C, followed by a conjugated secondary (sp-0023) for 20 minutes and DAB staining.