

BZW2 Polyclonal Antibody
Purified Rabbit Polyclonal Antibody (Pab)
Catalog # AP59075

Specification

BZW2 Polyclonal Antibody - Product Information

Application	WB, IHC-P, IHC-F, IF, E
Primary Accession	Q9Y6E2
Reactivity	Rat, Bovine
Host	Rabbit
Clonality	Polyclonal
Calculated MW	48 KDa
Physical State	Liquid
Immunogen	KLH conjugated synthetic peptide derived from human BZW2
Epitope Specificity	151-250/419
Isotype	IgG
Purity	
affinity purified by Protein A	
Buffer	0.01M TBS (pH7.4) with 1% BSA, 0.02% Proclin300 and 50% Glycerol.
SIMILARITY	Belongs to the BZW family. Contains 1 W2 domain.
Important Note	This product as supplied is intended for research use only, not for use in human, therapeutic or diagnostic applications.

Background Descriptions

BZW2, also known as HSPC028 or MSTP017, is a 419 amino acid protein that contains one W2 domain and is thought to be involved in neuronal differentiation. The gene encoding BZW2 maps to human chromosome 7. Chromosome 7 houses over 1,000 genes and comprises nearly 5% of the human genome. Defects in some of the genes localized to chromosome 7 have been linked to Osteogenesis imperfecta, Pendred syndrome, Lissencephaly, Citrullinemia and Shwachman-Diamond syndrome. The deletion of a portion of the q arm of chromosome 7 is associated with Williams-Beuren syndrome, a condition characterized by mild mental retardation, an unusual comfort and friendliness with strangers and an elfin appearance. Deletions of portions of the q arm of chromosome 7 are also seen in a number of myeloid disorders, including cases of acute myelogenous leukemia and myelodysplasia.

BZW2 Polyclonal Antibody - Additional Information

Gene ID 28969

Other Names

Basic leucine zipper and W2 domain-containing protein 2, BZW2

Dilution

WB~~1:1000<br \>IHC-P~~N/A<br \><span class

=["dilution_IHC-F">IHC-F~N/A](#)
=["dilution_IF">IF~1:50~200](#)
=["dilution_E">E~N/A](#)

Storage

Store at -20 °C for one year. Avoid repeated freeze/thaw cycles. When reconstituted in sterile pH 7.4 0.01M PBS or diluent of antibody the antibody is stable for at least two weeks at 2-4 °C.

BZW2 Polyclonal Antibody - Protein Information

Name BZW2

Synonyms 5MP1 {ECO:0000303|PubMed:21745818}

Function

Translation initiation regulator which represses non-AUG initiated translation and repeat-associated non-AUG (RAN) initiated translation by acting as a competitive inhibitor of eukaryotic translation initiation factor 5 (EIF5) function (PubMed:[21745818](http://www.uniprot.org/citations/21745818), PubMed:[28981728](http://www.uniprot.org/citations/28981728), PubMed:[29470543](http://www.uniprot.org/citations/29470543), PubMed:[34260931](http://www.uniprot.org/citations/34260931)). Increases the accuracy of translation initiation by impeding EIF5-dependent translation from non-AUG codons by competing with it for interaction with EIF2S2 within the 43S pre-initiation complex (PIC) in an EIF3C- binding dependent manner (PubMed:[21745818](http://www.uniprot.org/citations/21745818), PubMed:[28981728](http://www.uniprot.org/citations/28981728), PubMed:[34260931](http://www.uniprot.org/citations/34260931)).

Cellular Location

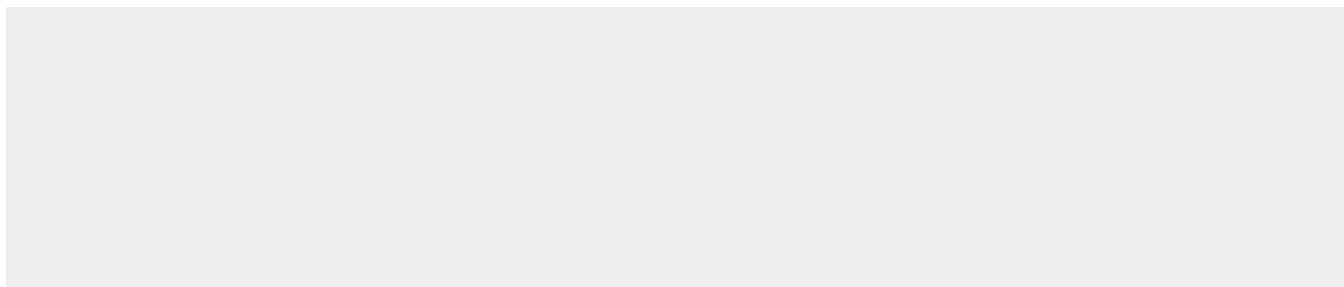
Cytoplasm.

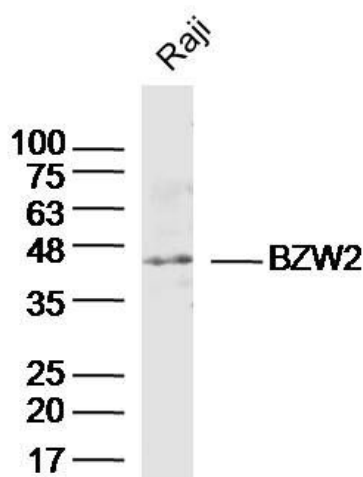
BZW2 Polyclonal Antibody - Protocols

Provided below are standard protocols that you may find useful for product applications.

- [Western Blot](#)
- [Blocking Peptides](#)
- [Dot Blot](#)
- [Immunohistochemistry](#)
- [Immunofluorescence](#)
- [Immunoprecipitation](#)
- [Flow Cytometry](#)
- [Cell Culture](#)

BZW2 Polyclonal Antibody - Images





Sample:Raji (Human)Cell Lysate at 40 ug
Primary: Anti-BZW2(bs-8726R)at 1/300 dilution
Secondary: IRIye800CW Goat Anti-RabbitIgG at 1/20000 dilution
Predicted band size: 48kD
Observed band size: 46kD