

CILP2 Antibody (Center)
Affinity Purified Rabbit Polyclonal Antibody (Pab)
Catalog # AP5907c**Specification**

CILP2 Antibody (Center) - Product Information

Application	WB, IHC-P,E
Primary Accession	Q8IUL8
Other Accession	NP_694953.2
Reactivity	Human
Host	Rabbit
Clonality	Polyclonal
Isotype	Rabbit IgG
Calculated MW	126291
Antigen Region	825-852

CILP2 Antibody (Center) - Additional Information**Gene ID** 148113**Other Names**

Cartilage intermediate layer protein 2, CILP-2, Cartilage intermediate layer protein 2 C1, Cartilage intermediate layer protein 2 C2, CILP2

Target/Specificity

This CILP2 antibody is generated from rabbits immunized with a KLH conjugated synthetic peptide between 825-852 amino acids from the Central region of human CILP2.

Dilution

WB~~1:1000
IHC-P~~1:50~100

Format

Purified polyclonal antibody supplied in PBS with 0.09% (W/V) sodium azide. This antibody is purified through a protein A column, followed by peptide affinity purification.

Storage

Maintain refrigerated at 2-8°C for up to 2 weeks. For long term storage store at -20°C in small aliquots to prevent freeze-thaw cycles.

Precautions

CILP2 Antibody (Center) is for research use only and not for use in diagnostic or therapeutic procedures.

CILP2 Antibody (Center) - Protein Information**Name** CILP2

Function May play a role in cartilage scaffolding.

Cellular Location

Secreted, extracellular space, extracellular matrix

Tissue Location

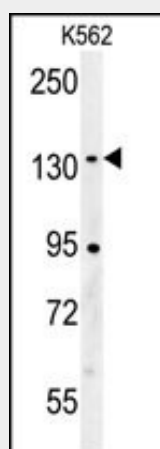
Expressed in articular chondrocytes but not in knee meniscal cartilage cells (PubMed:12746903).
Localizes to the intermediate to deep zone of articular cartilage (PubMed:21880736)

CILP2 Antibody (Center) - Protocols

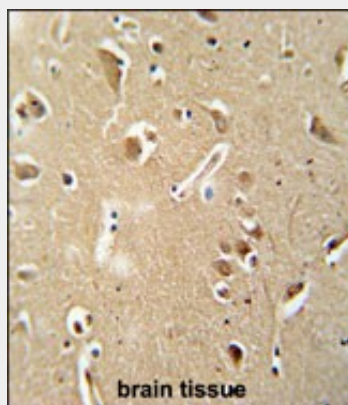
Provided below are standard protocols that you may find useful for product applications.

- [Western Blot](#)
- [Blocking Peptides](#)
- [Dot Blot](#)
- [Immunohistochemistry](#)
- [Immunofluorescence](#)
- [Immunoprecipitation](#)
- [Flow Cytometry](#)
- [Cell Culture](#)

CILP2 Antibody (Center) - Images



CILP2 Antibody (Center) (Cat. #AP5907c) western blot analysis in K562 cell line lysates (35ug/lane). This demonstrates the CILP2 antibody detected the CILP2 protein (arrow).



CILP2 antibody (Center) (Cat. #AP5907c) immunohistochemistry analysis in formalin fixed and paraffin embedded human brain tissue followed by peroxidase conjugation of the secondary antibody and DAB staining. This data demonstrates the use of the CILP2 antibody (Center) for immunohistochemistry. Clinical relevance has not been evaluated.