

TIM 3 Polyclonal Antibody
Purified Rabbit Polyclonal Antibody (Pab)
Catalog # AP59082**Specification****TIM 3 Polyclonal Antibody - Product Information**

Application	WB, IHC-P, IHC-F, IF, ICC, E
Reactivity	Rat
Host	Rabbit
Clonality	Polyclonal
Calculated MW	29 KDa
Physical State	Liquid
Immunogen	KLH conjugated synthetic peptide derived from mouse HAVCR2
Epitope Specificity	151-250/281
Isotype	IgG
Purity	
affinity purified by Protein A	
Buffer	0.01M TBS (pH7.4) with 1% BSA, 0.02% Proclin300 and 50% Glycerol.
SUBCELLULAR LOCATION	Membrane.
SIMILARITY	Belongs to the immunoglobulin superfamily. TIM family. Contains 1 Ig-like V-type (immunoglobulin-like) domain.
Post-translational modifications	O-glycosylated with core 1 or possibly core 8 glycans.
Important Note	This product as supplied is intended for research use only, not for use in human, therapeutic or diagnostic applications.

Background Descriptions

The protein encoded by this gene belongs to the immunoglobulin superfamily, and TIM family of proteins. CD4-positive T helper lymphocytes can be divided into types 1 (Th1) and 2 (Th2) on the basis of their cytokine secretion patterns. Th1 cells are involved in cell-mediated immunity to intracellular pathogens and delayed-type hypersensitivity reactions, whereas, Th2 cells are involved in the control of extracellular helminthic infections and the promotion of atopic and allergic diseases. This protein is a Th1-specific cell surface protein that regulates macrophage activation, and inhibits Th1-mediated auto- and alloimmune responses, and promotes immunological tolerance. [provided by RefSeq, Sep 2011]

TIM 3 Polyclonal Antibody - Additional Information**Target/Specificity**

T-helper type 1 lymphocyte (Th1)-specific.

Dilution

WB~~1:1000<br \>IHC-P~~N/A<br \>IHC-F~~N/A<br \><span class

=IF~~1:50~200<br \>ICC~~N/A<br \>E~~N/A

Format

0.01M TBS(pH7.4), 0.09% (W/V) sodium azide and 50% Glyce

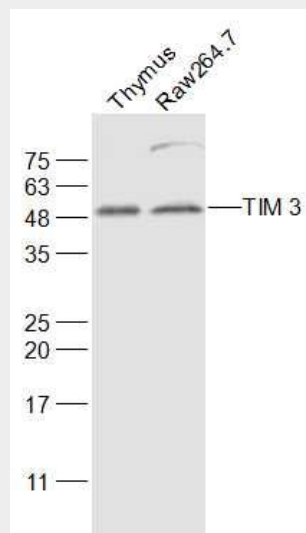
Storage

Store at -20 °C for one year. Avoid repeated freeze/thaw cycles. When reconstituted in sterile pH 7.4 0.01M PBS or diluent of antibody the antibody is stable for at least two weeks at 2-4 °C.

TIM 3 Polyclonal Antibody - Protein Information**TIM 3 Polyclonal Antibody - Protocols**

Provided below are standard protocols that you may find useful for product applications.

- [Western Blot](#)
- [Blocking Peptides](#)
- [Dot Blot](#)
- [Immunohistochemistry](#)
- [Immunofluorescence](#)
- [Immunoprecipitation](#)
- [Flow Cytometry](#)
- [Cell Culture](#)

TIM 3 Polyclonal Antibody - Images**Sample:**

Thymus (Mouse) Lysate at 40 ug

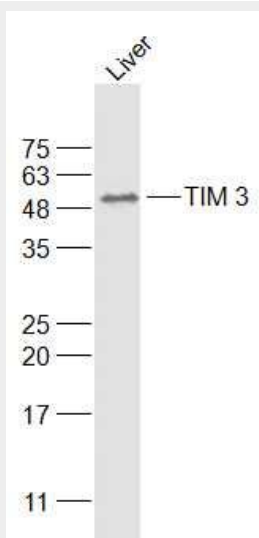
Raw264.7(Mouse) Cell Lysate at 30 ug

Primary: Anti-TIM 3 (bs-8766R) at 1/1000 dilution

Secondary: IRDye800CW Goat Anti-Rabbit IgG at 1/20000 dilution

Predicted band size: 29 kD

Observed band size: 49 kD

**Sample:**

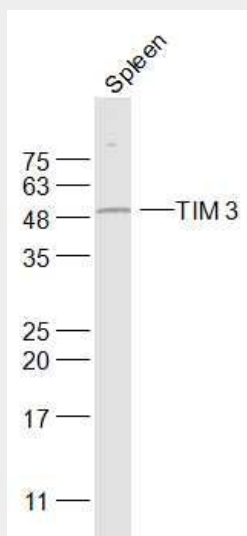
Liver(Rat) Lysate at 40 ug

Primary: Anti-TIM 3 (bs-8766R) at 1/1000 dilution

Secondary: IRDye800CW Goat Anti-Rabbit IgG at 1/20000 dilution

Predicted band size: 29 kD

Observed band size: 49 kD

**Sample:**

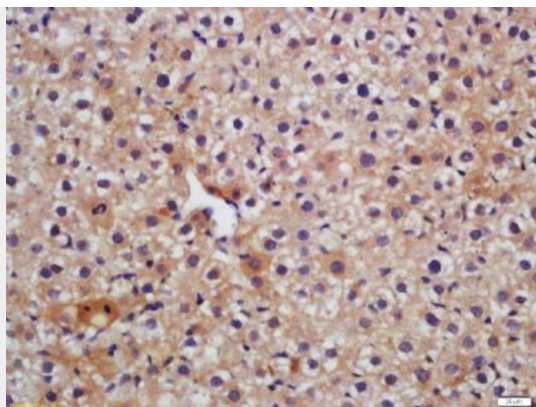
Spleen (Mouse) Lysate at 40 ug

Primary: Anti-TIM 3 (bs-8766R) at 1/1000 dilution

Secondary: IRDye800CW Goat Anti-Rabbit IgG at 1/20000 dilution

Predicted band size: 29 kD

Observed band size: 49 kD



Tissue/cell: rat liver tissue; 4% Paraformaldehyde-fixed and paraffin-embedded;

Antigen retrieval: citrate buffer (0.01M, pH 6.0), Boiling bathing for 15min; Block endogenous peroxidase by 3% Hydrogen peroxide for 30min; Blocking buffer (normal goat serum,C-0005) at 37°C for 20 min;

Incubation: Anti-TIM-3 Polyclonal Antibody, Unconjugated(bs-8766R) 1:200, overnight at 4°C, followed by conjugation to the secondary antibody(SP-0023) and DAB(C-0010) staining