

**DIS3L2 Polyclonal Antibody**  
**Purified Rabbit Polyclonal Antibody (Pab)**  
**Catalog # AP59123****Specification**

---

**DIS3L2 Polyclonal Antibody - Product Information**

Application	FC
Primary Accession	<a href="#">Q8IYB7</a>
Reactivity	Rat, Pig, Dog, Bovine
Host	Rabbit
Clonality	Polyclonal
Calculated MW	99279

**DIS3L2 Polyclonal Antibody - Additional Information****Gene ID** 129563**Other Names**

DIS3-like exonuclease 2 {ECO:0000255|HAMAP-Rule:MF\_03045}, hDIS3L2, 3.1.13.-  
{ECO:0000255|HAMAP-Rule:MF\_03045}, DIS3L2 {ECO:0000255|HAMAP-Rule:MF\_03045}, FAM6A

**Format**

0.01M TBS(pH7.4), 0.09% (W/V) sodium azide and 50% Glyce

**Storage**

Store at -20 °C for one year. Avoid repeated freeze/thaw cycles. When reconstituted in sterile pH 7.4 0.01M PBS or diluent of antibody the antibody is stable for at least two weeks at 2-4 °C.

**DIS3L2 Polyclonal Antibody - Protein Information****Name** DIS3L2 {ECO:0000255|HAMAP-Rule:MF\_03045}**Synonyms** FAM6A**Function**

3'-5'-exoribonuclease that specifically recognizes RNAs polyuridylated at their 3' end and mediates their degradation. Component of an exosome-independent RNA degradation pathway that mediates degradation of both mRNAs and miRNAs that have been polyuridylated by a terminal uridylyltransferase, such as ZCCHC11/TUT4. Mediates degradation of cytoplasmic mRNAs that have been deadenylated and subsequently uridylated at their 3'. Mediates degradation of uridylated pre-let-7 miRNAs, contributing to the maintenance of embryonic stem (ES) cells. Essential for correct mitosis, and negatively regulates cell proliferation.

**Cellular Location**

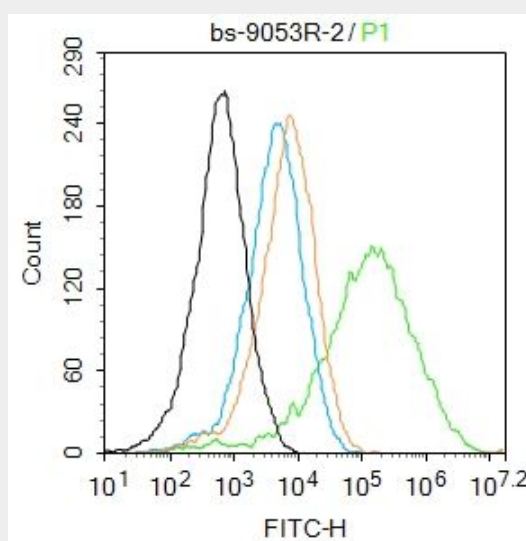
Cytoplasm. Cytoplasm, P-body

## DIS3L2 Polyclonal Antibody - Protocols

Provided below are standard protocols that you may find useful for product applications.

- [Western Blot](#)
- [Blocking Peptides](#)
- [Dot Blot](#)
- [Immunohistochemistry](#)
- [Immunofluorescence](#)
- [Immunoprecipitation](#)
- [Flow Cytometry](#)
- [Cell Culture](#)

## DIS3L2 Polyclonal Antibody - Images



Blank control: Mouse kidney.

Primary Antibody (green line): Rabbit Anti-DIS3L2 antibody (bs-9053R)

Dilution: 2  $\mu$ g /  $10^6$  cells;

Isotype Control Antibody (orange line): Rabbit IgG .

Secondary Antibody : Goat anti-rabbit IgG-AF488

Dilution: 1  $\mu$ g /test.

Protocol

The cells were fixed with 4% PFA (10min at room temperature) and then permeabilized with 0.1% PBST for 20 min at room temperature. The cells were then incubated in 5% BSA to block non-specific protein-protein interactions for 30 min at room temperature. Cells stained with Primary Antibody for 30 min at room temperature. The secondary antibody used for 40 min at room temperature. Acquisition of 20,000 events was performed.