

**Dermokine beta Polyclonal Antibody**  
**Purified Rabbit Polyclonal Antibody (Pab)**  
**Catalog # AP59125****Specification**

---

**Dermokine beta Polyclonal Antibody - Product Information**

Application	IHC-P, IHC-F, IF, E
Primary Accession	<a href="#">Q6E0U4</a>
Reactivity	Rat
Host	Rabbit
Clonality	Polyclonal
Calculated MW	47082

**Dermokine beta Polyclonal Antibody - Additional Information****Gene ID** 93099**Other Names**

Dermokine, Epidermis-specific secreted protein SK30/SK89, DMKN

**Dilution**

IHC-P ~ ~ N/A  
IHC-F ~ ~ N/A  
IF ~ ~ 1:50 ~ 200  
E ~ ~ N/A

**Format**

0.01M TBS(pH7.4), 0.09% (W/V) sodium azide and 50% Glyce

**Storage**

Store at -20 °C for one year. Avoid repeated freeze/thaw cycles. When reconstituted in sterile pH 7.4 0.01M PBS or diluent of antibody the antibody is stable for at least two weeks at 2-4 °C.

**Dermokine beta Polyclonal Antibody - Protein Information****Name** DMKN**Function**

May act as a soluble regulator of keratinocyte differentiation.

**Cellular Location**

Secreted.

**Tissue Location**

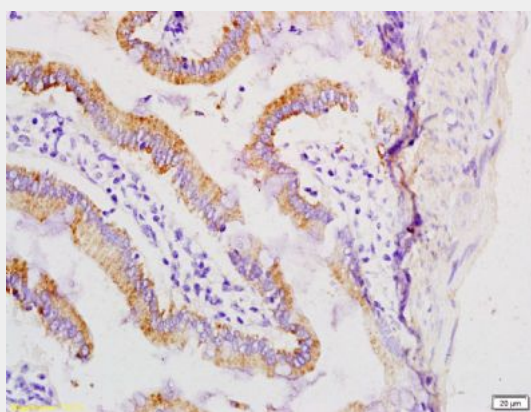
Expressed in epidermis; in the spinous and granular layers and in placenta. Also found in the epithelia of the small intestine, macrophages of the lung and endothelial cells of the lung Isoform 15 is expressed in epidermis and placenta. Isoform 1 is expressed in epidermis.

## Dermokine beta Polyclonal Antibody - Protocols

Provided below are standard protocols that you may find useful for product applications.

- [Western Blot](#)
- [Blocking Peptides](#)
- [Dot Blot](#)
- [Immunohistochemistry](#)
- [Immunofluorescence](#)
- [Immunoprecipitation](#)
- [Flow Cytometry](#)
- [Cell Culture](#)

## Dermokine beta Polyclonal Antibody - Images



Tissue/cell: rat small intestine tissue; 4% Paraformaldehyde-fixed and paraffin-embedded;

Antigen retrieval: citrate buffer ( 0.01M, pH 6.0 ), Boiling bathing for 15min; Block endogenous peroxidase by 3% Hydrogen peroxide for 30min; Blocking buffer (normal goat serum,C-0005) at 37°C for 20 min;

Incubation: Anti-Dermokine beta Polyclonal Antibody, Unconjugated(bs-9056R) 1:200, overnight at 4°C, followed by conjugation to the secondary antibody(SP-0023) and DAB(C-0010) staining