

BCAN Antibody (C-term)
Affinity Purified Rabbit Polyclonal Antibody (Pab)
Catalog # AP5915b**Specification**

BCAN Antibody (C-term) - Product Information

Application	FC, WB, IHC-P,E
Primary Accession	Q96GW7
Other Accession	Q28062 , NP_940819.1 , NP_068767.3
Reactivity	Human
Predicted	Bovine
Host	Rabbit
Clonality	Polyclonal
Isotype	Rabbit IgG
Calculated MW	99118
Antigen Region	715-741

BCAN Antibody (C-term) - Additional Information**Gene ID** 63827**Other Names**

Brevican core protein, Brain-enriched hyaluronan-binding protein, BEHAB, Chondroitin sulfate proteoglycan 7, BCAN, BEHAB, CSPG7

Target/Specificity

This BCAN antibody is generated from rabbits immunized with a KLH conjugated synthetic peptide between 715-741 amino acids from the C-terminal region of human BCAN.

Dilution

FC~~1:10~50

WB~~1:1000

IHC-P~~1:50~100

E~~Use at an assay dependent concentration.

Format

Purified polyclonal antibody supplied in PBS with 0.09% (W/V) sodium azide. This antibody is purified through a protein A column, followed by peptide affinity purification.

Storage

Maintain refrigerated at 2-8°C for up to 2 weeks. For long term storage store at -20°C in small aliquots to prevent freeze-thaw cycles.

Precautions

BCAN Antibody (C-term) is for research use only and not for use in diagnostic or therapeutic procedures.

BCAN Antibody (C-term) - Protein Information

Name BCAN

Synonyms BEHAB, CSPG7

Function May play a role in the terminally differentiating and the adult nervous system during postnatal development. Could stabilize interactions between hyaluronan (HA) and brain proteoglycans.

Cellular Location

Secreted [Isoform 2]: Membrane; Lipid-anchor, GPI-anchor.

Tissue Location

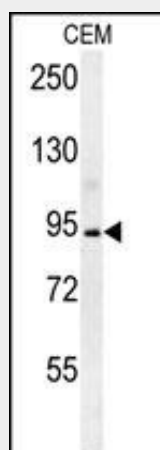
Expressed in the retina, specifically in the inner nuclear layer, inner plexiform layer and ganglion cell layer (at protein level) (PubMed:29777959). Detected in cerebrospinal fluid (at protein level) (PubMed:25326458). Detected in urine (at protein level) (PubMed:37453717).

BCAN Antibody (C-term) - Protocols

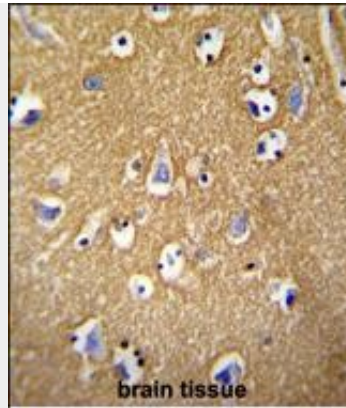
Provided below are standard protocols that you may find useful for product applications.

- [Western Blot](#)
- [Blocking Peptides](#)
- [Dot Blot](#)
- [Immunohistochemistry](#)
- [Immunofluorescence](#)
- [Immunoprecipitation](#)
- [Flow Cytometry](#)
- [Cell Culture](#)

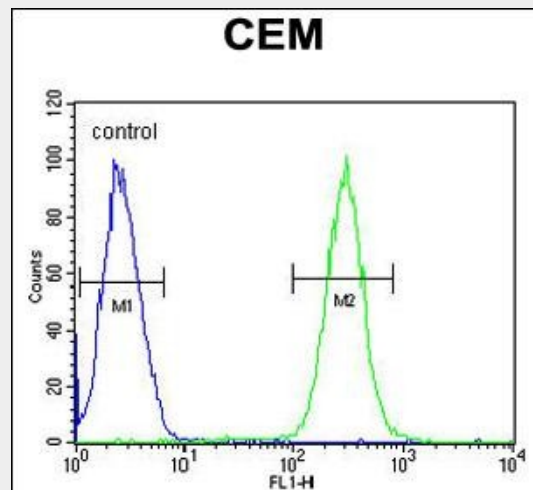
BCAN Antibody (C-term) - Images



BCAN Antibody (C-term) (Cat. #AP5915b) western blot analysis in CEM cell line lysates (35ug/lane). This demonstrates the BCAN antibody detected the BCAN protein (arrow).



BCAN antibody (C-term) (Cat. #AP5915b) immunohistochemistry analysis in formalin fixed and paraffin embedded human brain tissue followed by peroxidase conjugation of the secondary antibody and DAB staining. This data demonstrates the use of the BCAN antibody (C-term) for immunohistochemistry. Clinical relevance has not been evaluated.



BCAN Antibody (C-term) (Cat. #AP5915b) flow cytometric analysis of CEM cells (right histogram) compared to a negative control cell (left histogram). FITC-conjugated goat-anti-rabbit secondary antibodies were used for the analysis.