

RNF6 Polyclonal Antibody
Purified Rabbit Polyclonal Antibody (Pab)
Catalog # AP59170**Specification****RNF6 Polyclonal Antibody - Product Information**

Application	WB, IHC-P, IHC-F, IF, ICC, E
Primary Accession	Q9Y252
Reactivity	Rat, Dog, Bovine
Host	Rabbit
Clonality	Polyclonal
Calculated MW	78091

RNF6 Polyclonal Antibody - Additional Information**Gene ID** 6049**Other Names**

E3 ubiquitin-protein ligase RNF6, 2.3.2.27, RING-type E3 ubiquitin transferase RNF6, RNF6, SPG2

Dilution

WB~~1:1000<br \>IHC-P~~N/A<br \>IHC-F~~N/A<br \>IF~~1:50~200<br \>ICC~~N/A<br \>E~~N/A

Storage

Store at -20 °C for one year. Avoid repeated freeze/thaw cycles. When reconstituted in sterile pH 7.4 0.01M PBS or diluent of antibody the antibody is stable for at least two weeks at 2-4 °C.

RNF6 Polyclonal Antibody - Protein Information**Name** RNF6 {ECO:0000303|PubMed:10331950, ECO:0000312|HGNC:HGNC:10069}**Function**

E3 ubiquitin-protein ligase mediating 'Lys-48'-linked polyubiquitination of LIMK1 and its subsequent targeting to the proteasome for degradation (By similarity). Negatively regulates axonal outgrowth through regulation of the LIMK1 turnover (By similarity). Mediates 'Lys-6' and 'Lys-27'-linked polyubiquitination of AR/androgen receptor thereby modulating its transcriptional activity (PubMed:19345326). May also bind DNA and function as a transcriptional regulator (By similarity). Mediates polyubiquitination of QKI in macrophages, leading to its degradation (By similarity).

Cellular Location

Nucleus. Cytoplasm. Cell projection, axon {ECO:0000250|UniProtKB:Q9DBU5}. Nucleus, PML body {ECO:0000250|UniProtKB:Q9DBU5}. Note=Localizes to the PML nuclear bodies in Sertoli cells.

{ECO:0000250|UniProtKB:Q9DBU5}

Tissue Location

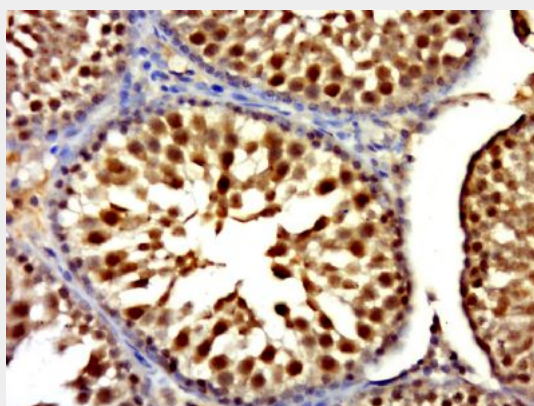
Weakly expressed in peripheral blood, spleen, prostate, testis and ovary (PubMed:19345326). According to a report, it is preferentially expressed in testis and ovary and hardly detected in other tissues (PubMed:18368307).

RNF6 Polyclonal Antibody - Protocols

Provided below are standard protocols that you may find useful for product applications.

- [Western Blot](#)
- [Blocking Peptides](#)
- [Dot Blot](#)
- [Immunohistochemistry](#)
- [Immunofluorescence](#)
- [Immunoprecipitation](#)
- [Flow Cytometry](#)
- [Cell Culture](#)

RNF6 Polyclonal Antibody - Images



Paraformaldehyde-fixed, paraffin embedded (rat testis); Antigen retrieval by boiling in sodium citrate buffer (pH6.0) for 15min; Block endogenous peroxidase by 3% hydrogen peroxide for 20 minutes; Blocking buffer (normal goat serum) at 37°C for 30min; Antibody incubation with (RNF6) Polyclonal Antibody, Unconjugated (bs-9172R) at 1:500 overnight at 4°C, followed by a conjugated secondary (sp-0023) for 20 minutes and DAB staining.