

RNF150 Polyclonal Antibody
Purified Rabbit Polyclonal Antibody (Pab)
Catalog # AP59198**Specification****RNF150 Polyclonal Antibody - Product Information**

Application	WB, IHC-P, IHC-F, IF, ICC, E
Primary Accession	Q9ULK6
Reactivity	Rat
Host	Rabbit
Clonality	Polyclonal
Calculated MW	44 KDa
Physical State	Liquid
Immunogen	KLH conjugated synthetic peptide derived from human RNF150
Epitope Specificity	51-150/347
Isotype	IgG
Purity	
affinity purified by Protein A	
Buffer	0.01M TBS (pH7.4) with 1% BSA, 0.02% Proclin300 and 50% Glycerol.
SUBCELLULAR LOCATION	Contains 1 PA (protease associated) domain.Contains 1 RING-type zinc finger.
SIMILARITY	Contains 1 PA (protease associated) domain.Contains 1 RING-type zinc finger.
Important Note	This product as supplied is intended for research use only, not for use in human, therapeutic or diagnostic applications.

Background Descriptions

Predicted to enable ubiquitin protein ligase activity. Predicted to be involved in ubiquitin-dependent protein catabolic process. Predicted to be integral component of membrane. Predicted to be active in cytoplasm. [provided by Alliance of Genome Resources, Apr 2022]

RNF150 Polyclonal Antibody - Additional Information**Gene ID** 57484**Other Names**

RING finger protein 150, RNF150, KIAA1214

Dilution

WB~~1:1000<br \>IHC-P~~N/A<br \>IHC-F~~N/A<br \>IF~~1:50~200<br \>ICC~~N/A<br \>E~~N/A

Format

0.01M TBS(pH7.4), 0.09% (W/V) sodium azide and 50% Glyce

Storage

Store at -20 °C for one year. Avoid repeated freeze/thaw cycles. When reconstituted in sterile pH 7.4 0.01M PBS or diluent of antibody the antibody is stable for at least two weeks at 2-4 °C.

RNF150 Polyclonal Antibody - Protein Information

Name RNF150

Synonyms KIAA1214

Cellular Location

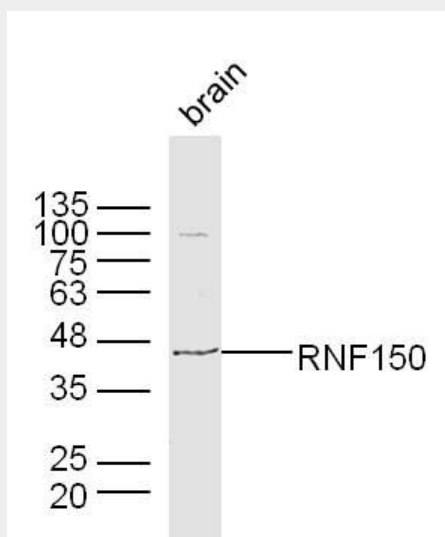
Membrane; Single-pass type I membrane protein

RNF150 Polyclonal Antibody - Protocols

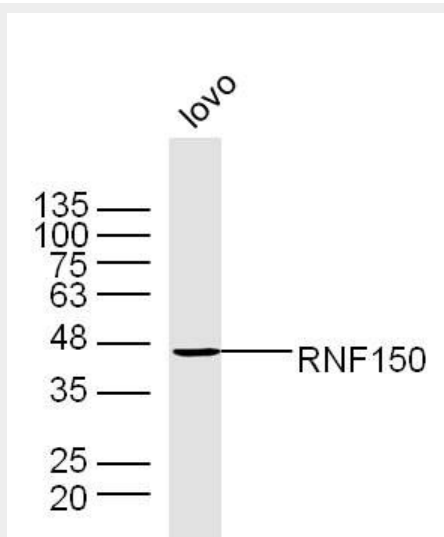
Provided below are standard protocols that you may find useful for product applications.

- [Western Blot](#)
- [Blocking Peptides](#)
- [Dot Blot](#)
- [Immunohistochemistry](#)
- [Immunofluorescence](#)
- [Immunoprecipitation](#)
- [Flow Cytometry](#)
- [Cell Culture](#)

RNF150 Polyclonal Antibody - Images



Sample: Brain (Mouse) Lysate at 40 ug
Primary: Anti-RNF150 (bs-9257R) at 1/300 dilution
Secondary: IRDye800CW Goat Anti-Rabbit IgG at 1/20000 dilution
Predicted band size: 44 kD
Observed band size: 44 kD



Sample: Lovo Cell (Human) Lysate at 40 ug
Primary: Anti-RNF150 (bs-9257R) at 1/300 dilution
Secondary: IRDye800CW Goat Anti-Rabbit IgG at 1/20000 dilution
Predicted band size: 44 kD
Observed band size: 44 kD