

CENPO Polyclonal Antibody
Purified Rabbit Polyclonal Antibody (Pab)
Catalog # AP59212**Specification**

CENPO Polyclonal Antibody - Product Information

Application	WB
Primary Accession	Q9BU64
Reactivity	Rat, Pig, Dog, Bovine
Host	Rabbit
Clonality	Polyclonal
Calculated MW	33786

CENPO Polyclonal Antibody - Additional Information**Gene ID** 79172**Other Names**

Centromere protein O, CENP-O, Interphase centromere complex protein 36, CENPO, ICEN36, MCM21R

Format

0.01M TBS(pH7.4), 0.09% (W/V) sodium azide and 50% Glyce

Storage

Store at -20 °C for one year. Avoid repeated freeze/thaw cycles. When reconstituted in sterile pH 7.4 0.01M PBS or diluent of antibody the antibody is stable for at least two weeks at 2-4 °C.

CENPO Polyclonal Antibody - Protein Information**Name** CENPO**Synonyms** ICEN36, MCM21R**Function**

Component of the CENPA-CAD (nucleosome distal) complex, a complex recruited to centromeres which is involved in assembly of kinetochore proteins, mitotic progression and chromosome segregation. May be involved in incorporation of newly synthesized CENPA into centromeres via its interaction with the CENPA-NAC complex. Modulates the kinetochore-bound levels of NDC80 complex.

Cellular Location

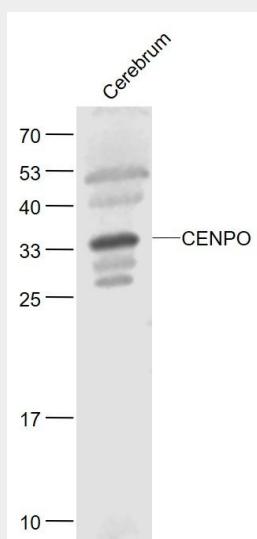
Nucleus. Chromosome, centromere. Chromosome, centromere, kinetochore. Note=The CENPA-CAD complex is probably recruited on centromeres by the CENPA-NAC complex

CENPO Polyclonal Antibody - Protocols

Provided below are standard protocols that you may find useful for product applications.

- [Western Blot](#)
- [Blocking Peptides](#)
- [Dot Blot](#)
- [Immunohistochemistry](#)
- [Immunofluorescence](#)
- [Immunoprecipitation](#)
- [Flow Cytometry](#)
- [Cell Culture](#)

CENPO Polyclonal Antibody - Images



Sample:

Cerebrum (Mouse) Lysate at 40 ug

Primary: Anti-CENPO (bs-9305R) at 1/1000 dilution

Secondary: IRDye800CW Goat Anti-Rabbit IgG at 1/20000 dilution

Predicted band size: 34 kD

Observed band size: 34 kD