

NHLRC2 Polyclonal Antibody
Purified Rabbit Polyclonal Antibody (Pab)
Catalog # AP59226**Specification**

NHLRC2 Polyclonal Antibody - Product Information

Application	FC
Primary Accession	Q8NBF2
Reactivity	Rat, Pig, Bovine
Host	Rabbit
Clonality	Polyclonal
Calculated MW	79444

NHLRC2 Polyclonal Antibody - Additional Information**Gene ID** 374354**Other Names**

NHL repeat-containing protein 2, NHLRC2

Format

0.01M TBS(pH7.4), 0.09% (W/V) sodium azide and 50% Glyce

Storage

Store at -20 °C for one year. Avoid repeated freeze/thaw cycles. When reconstituted in sterile pH 7.4 0.01M PBS or diluent of antibody the antibody is stable for at least two weeks at 2-4 °C.

NHLRC2 Polyclonal Antibody - Protein Information**Name** NHLRC2**Function**

Required for normal embryonic development.

Cellular Location

Cytoplasm, cytosol.

Tissue Location

Ubiquitous. Detected in heart, kidney, muscle, brain, lung, liver and in skin fibroblasts (at protein level)

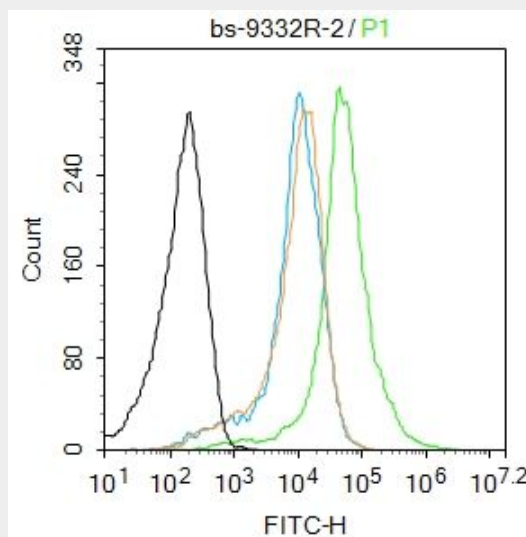
NHLRC2 Polyclonal Antibody - Protocols

Provided below are standard protocols that you may find useful for product applications.

- [Western Blot](#)

- [Blocking Peptides](#)
- [Dot Blot](#)
- [Immunohistochemistry](#)
- [Immunofluorescence](#)
- [Immunoprecipitation](#)
- [Flow Cytometry](#)
- [Cell Culture](#)

NHLRC2 Polyclonal Antibody - Images



Blank control: Mouse spleen.

Primary Antibody (green line): Rabbit Anti-NHLRC2 antibody (bs-9332R)

Dilution: 2 µg /10⁶ cells;

Isotype Control Antibody (orange line): Rabbit IgG .

Secondary Antibody : Goat anti-rabbit IgG-AF488

Dilution: 1 µg /test.

Protocol

The cells were fixed with 70% ethanol (10min at room temperature) and then were incubated in 5%BSA to block non-specific protein-protein interactions for 30 min at room temperature .Cells stained with Primary Antibody for 30 min at room temperature. The secondary antibody used for 40 min at room temperature. Acquisition of 20,000 events was performed.