

MARCH4 Polyclonal Antibody
Purified Rabbit Polyclonal Antibody (Pab)
Catalog # AP59228**Specification****MARCH4 Polyclonal Antibody - Product Information**

Application	WB, IHC-P, IHC-F, IF, E
Primary Accession	Q9P2E8
Reactivity	Rat, Pig, Dog, Bovine
Host	Rabbit
Clonality	Polyclonal
Calculated MW	43 KDa
Physical State	Liquid
Immunogen	KLH conjugated synthetic peptide derived from human MARCH4
Epitope Specificity	261-360/410
Purity	
affinity purified by Protein A	
Buffer	0.01M TBS (pH7.4) with 1% BSA, 0.02% Proclin300 and 50% Glycerol.
SUBCELLULAR LOCATION	Golgi apparatus membrane; Multipass membrane protein.
SIMILARITY	Contains 1 RING-CH-type zinc finger.
Important Note	This product as supplied is intended for research use only, not for use in human, therapeutic or diagnostic applications.

Background Descriptions

MARCH4, an E3 ubiquitin protein ligase, may mediate ubiquitination of MHC I and CD4, and promote their subsequent endocytosis and sorting to lysosomes via multivesicular bodies. E3 ubiquitin protein ligases accept ubiquitin from an E2 ubiquitin conjugating enzyme in the form of a thioester and then directly transfer the ubiquitin to targeted substrates.

MARCH4 Polyclonal Antibody - Additional Information**Gene ID** 57574**Other Names**

E3 ubiquitin-protein ligase MARCHF4, 2.3.2.27, Membrane-associated RING finger protein 4, Membrane-associated RING-CH protein IV, MARCH-IV, RING finger protein 174, RING-type E3 ubiquitin transferase MARCHF4, MARCHF4 (http://www.genenames.org/cgi-bin/gene_symbol_report?hgnc_id=29269)
target="_blank">HGNC:29269)

Target/Specificity

Expressed in brain and placenta.

Dilution

WB~1:1000<br \><span class

=dilution_IHC-P">IHC-P~N/A<br \><span class
=dilution_IHC-F">IHC-F~N/A<br \><span class
=dilution_IF">IF~1:50~200<br \>E~N/A

Format

0.01M TBS(pH7.4), 0.09% (W/V) sodium azide and 50% Glyce

Storage

Store at -20 °C for one year. Avoid repeated freeze/thaw cycles. When reconstituted in sterile pH 7.4 0.01M PBS or diluent of antibody the antibody is stable for at least two weeks at 2-4 °C.

MARCH4 Polyclonal Antibody - Protein Information

Name MARCHF4 ([HGNC:29269](#))

Function

E3 ubiquitin-protein ligase that may mediate ubiquitination of MHC-I and CD4, and promote their subsequent endocytosis and sorting to lysosomes via multivesicular bodies. E3 ubiquitin ligases accept ubiquitin from an E2 ubiquitin-conjugating enzyme in the form of a thioester and then directly transfer the ubiquitin to targeted substrates.

Cellular Location

Golgi apparatus membrane; Multi-pass membrane protein

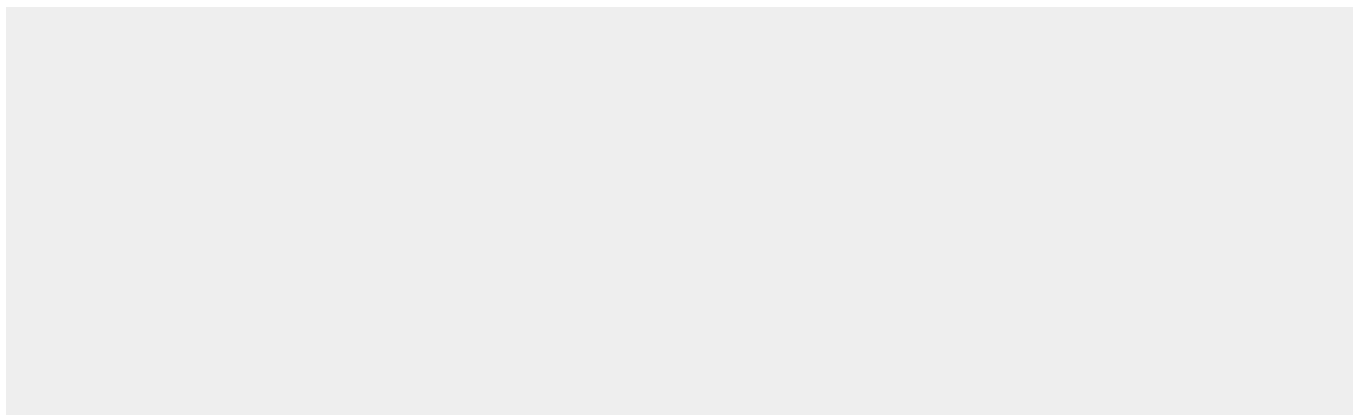
Tissue Location

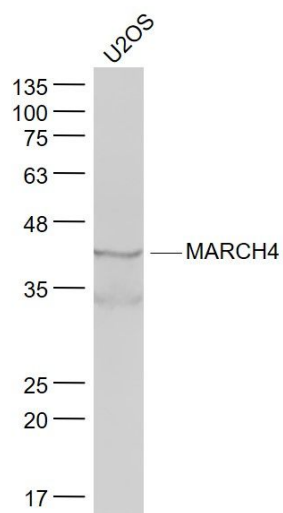
Expressed in brain and placenta.

MARCH4 Polyclonal Antibody - Protocols

Provided below are standard protocols that you may find useful for product applications.

- [Western Blot](#)
- [Blocking Peptides](#)
- [Dot Blot](#)
- [Immunohistochemistry](#)
- [Immunofluorescence](#)
- [Immunoprecipitation](#)
- [Flow Cytometry](#)
- [Cell Culture](#)

MARCH4 Polyclonal Antibody - Images



Sample:

U2OS(Human) Cell Lysate at 30 ug

Primary: Anti- MARCH4 (bs-9338R) at 1/1000 dilution

Secondary: IRDye800CW Goat Anti-Rabbit IgG at 1/20000 dilution

Predicted band size: 43 kD

Observed band size: 43 kD