

Nebulette Polyclonal Antibody
Purified Rabbit Polyclonal Antibody (Pab)
Catalog # AP59261**Specification**

Nebulette Polyclonal Antibody - Product Information

Application	WB, IHC-P, IHC-F, IF, ICC, E
Primary Accession	O76041
Reactivity	Rat
Host	Rabbit
Clonality	Polyclonal
Calculated MW	116453

Nebulette Polyclonal Antibody - Additional Information**Gene ID** 10529**Other Names**

Nebulette, Actin-binding Z-disk protein, NEBL, LNEBL

Dilution

WB~~1:1000<br \>IHC-P~~N/A<br \>IHC-F~~N/A<br \>IF~~1:50~200<br \>ICC~~N/A<br \>E~~N/A

Format

0.01M TBS(pH7.4), 0.09% (W/V) sodium azide and 50% Glyce

Storage

Store at -20 °C for one year. Avoid repeated freeze/thaw cycles. When reconstituted in sterile pH 7.4 0.01M PBS or diluent of antibody the antibody is stable for at least two weeks at 2-4 °C.

Nebulette Polyclonal Antibody - Protein Information**Name** NEBL ([HGNC:16932](#))**Function**

Binds to actin and plays an important role in the assembly of the Z-disk. May functionally link sarcomeric actin to the desmin intermediate filaments in the heart muscle sarcomeres (PubMed:27733623).

Cellular Location

[Isoform 2]: Cytoplasm

Tissue Location

Abundantly expressed in cardiac muscle, but not in skeletal or smooth muscle. Localized to Z-lines

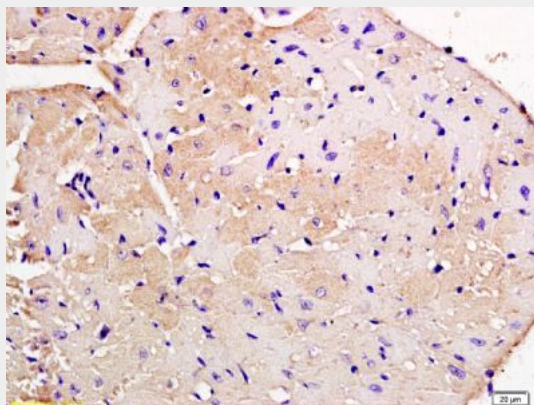
in cardiac cells and to dense bodies in nonmuscle cells. Isoform 2 is expressed in non-muscle cells such as in fibroblasts

Nebulette Polyclonal Antibody - Protocols

Provided below are standard protocols that you may find useful for product applications.

- [Western Blot](#)
- [Blocking Peptides](#)
- [Dot Blot](#)
- [Immunohistochemistry](#)
- [Immunofluorescence](#)
- [Immunoprecipitation](#)
- [Flow Cytometry](#)
- [Cell Culture](#)

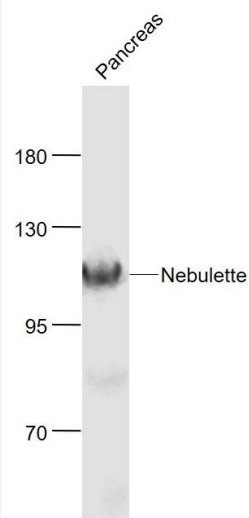
Nebulette Polyclonal Antibody - Images



Tissue/cell: mouse heart tissue; 4% Paraformaldehyde-fixed and paraffin-embedded;

Antigen retrieval: citrate buffer (0.01M, pH 6.0), Boiling bathing for 15min; Block endogenous peroxidase by 3% Hydrogen peroxide for 30min; Blocking buffer (normal goat serum,C-0005) at 37°C for 20 min;

Incubation: Anti-Nebulette Polyclonal Antibody, Unconjugated(bs-9468R) 1:200, overnight at 4°C, followed by conjugation to the secondary antibody(SP-0023) and DAB(C-0010) staining



Sample:

Pancreas (Mouse) Lysate at 40 ug

Primary: Anti- Nebulette (bs-9468R) at 1/1000 dilution

Secondary: IRDye800CW Goat Anti-Rabbit IgG at 1/20000 dilution

Predicted band size: 116 kD

Observed band size: 116 kD