

Mitoferrin 1 Polyclonal Antibody
Purified Rabbit Polyclonal Antibody (Pab)
Catalog # AP59281**Specification****Mitoferrin 1 Polyclonal Antibody - Product Information**

Application	WB, IHC-P, IHC-F, IF, E
Primary Accession	Q9NYZ2
Reactivity	Rat, Pig, Dog, Bovine
Host	Rabbit
Clonality	Polyclonal
Calculated MW	37 KDa
Physical State	Liquid
Immunogen	KLH conjugated synthetic peptide derived from human Mitoferrin 1
Epitope Specificity	201-300/338
Isotype	IgG
Purity	
affinity purified by Protein A	
Buffer	0.01M TBS (pH7.4) with 1% BSA, 0.02% Proclin300 and 50% Glycerol.
SUBCELLULAR LOCATION	Mitochondrial inner membrane; Multi-pass membrane protein
SIMILARITY	Belongs to the mitochondrial carrier family. Contains 3 Solcar repeats.
Important Note	This product as supplied is intended for research use only, not for use in human, therapeutic or diagnostic applications.

Background Descriptions

Mitoferrin1, SLC25A37, belongs to the mitochondrial carrier family and contains 3 Solcar repeats. It is a mitochondrial iron transporter that specifically mediates iron uptake in developing erythroid cells and plays an essential role in heme biosynthesis.

Mitoferrin 1 Polyclonal Antibody - Additional Information

Gene ID 51312

Other Names

Mitoferrin-1, Mitochondrial iron transporter 1, Mitochondrial solute carrier protein, Solute carrier family 25 member 37, SLC25A37, MFRN, MSCP

Dilution

WB~~1:1000
IHC-P~~N/A
IHC-F~~N/A
IF~~1:50~200
E~~N/A

Format

0.01M TBS(pH7.4), 0.09% (W/V) sodium azide and 50% Glyce

Storage

Store at -20 °C for one year. Avoid repeated freeze/thaw cycles. When reconstituted in sterile pH 7.4 0.01M PBS or diluent of antibody the antibody is stable for at least two weeks at 2-4 °C.

Mitoferrin 1 Polyclonal Antibody - Protein Information

Name SLC25A37

Synonyms MFRN, MSCP

Function

Mitochondrial iron transporter that specifically mediates iron uptake in developing erythroid cells, thereby playing an essential role in heme biosynthesis.

Cellular Location

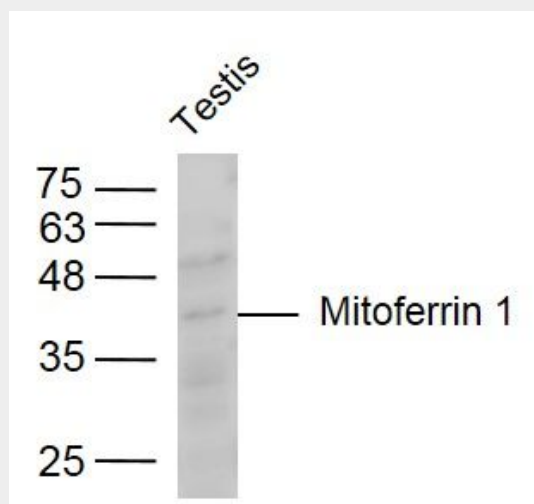
Mitochondrion inner membrane {ECO:0000250|UniProtKB:Q287T7}; Multi-pass membrane protein

Mitoferrin 1 Polyclonal Antibody - Protocols

Provided below are standard protocols that you may find useful for product applications.

- [Western Blot](#)
- [Blocking Peptides](#)
- [Dot Blot](#)
- [Immunohistochemistry](#)
- [Immunofluorescence](#)
- [Immunoprecipitation](#)
- [Flow Cytometry](#)
- [Cell Culture](#)

Mitoferrin 1 Polyclonal Antibody - Images



Sample:

Testis (Mouse) Lysate at 40 ug

Primary: Anti-Mitoferrin 1 (bs-9523R) at 1/300 dilution
Secondary: IRDye800CW Goat Anti-Rabbit IgG at 1/20000 dilution
Predicted band size: 37 kD
Observed band size: 37 kD