

C6orf120 Polyclonal Antibody
Purified Rabbit Polyclonal Antibody (Pab)
Catalog # AP59283**Specification**

C6orf120 Polyclonal Antibody - Product Information

Application	IHC-P, IHC-F, IF, ICC, E
Primary Accession	Q7Z4R8
Reactivity	Rat, Pig, Bovine
Host	Rabbit
Clonality	Polyclonal
Calculated MW	21 KDa
Physical State	Liquid
Immunogen	KLH conjugated synthetic peptide derived from human C6orf120
Epitope Specificity	1-100/191
Isotype	IgG
Purity	
affinity purified by Protein A	
Buffer	0.01M TBS (pH7.4) with 1% BSA, 0.02% Proclin300 and 50% Glycerol.
SUBCELLULAR LOCATION	Secreted. Note=Secreted by hepatocytes.
SIMILARITY	Belongs to the UPF0669 family.
Important Note	This product as supplied is intended for research use only, not for use in human, therapeutic or diagnostic applications.

Background Descriptions

Making up nearly 6% of the human genome, chromosome 6 contains around 1,200 genes within 170 million base pairs of sequence. Deletion of a portion of the q arm of chromosome 6 is associated with early onset intestinal cancer, suggesting the presence of a cancer susceptibility locus. Porphyrria cutanea tarda is associated with chromosome 6 through the HFE gene which, when mutated, predisposes an individual to developing this porphyria. Notably, the PARK2 gene, which is associated with Parkinson's disease, and the genes encoding the major histocompatibility complex proteins, which are key molecular components of the immune system and determine predisposition to rheumatic diseases, are also located on chromosome 6. Stickler syndrome, 21-hydroxylase deficiency and maple syrup urine disease are also associated with genes on chromosome 6. A bipolar disorder susceptibility locus has been identified on the q arm of chromosome 6. The C6orf120 gene product has been provisionally designated C6orf120 pending further characterization.

C6orf120 Polyclonal Antibody - Additional Information**Gene ID** 387263**Other Names**

UPF0669 protein C6orf120, C6orf120

Target/Specificity

Mainly expressed in hepatocytes and some weak expression in germinal center cells of lymph nodes.

Dilution

IHC-P~~N/A
IHC-F~~N/A
IF~~1:50~200
ICC~~N/A
E~~N/A

Format

0.01M TBS(pH7.4), 0.09% (W/V) sodium azide and 50% Glyce

Storage

Store at -20 °C for one year. Avoid repeated freeze/thaw cycles. When reconstituted in sterile pH 7.4 0.01M PBS or diluent of antibody the antibody is stable for at least two weeks at 2-4 °C.

C6orf120 Polyclonal Antibody - Protein Information

Name C6orf120

Function

May be involved in induction of apoptosis in CD4(+) T-cells, but not CD8(+) T-cells or hepatocytes.

Cellular Location

Secreted. Note=Secreted by hepatocytes

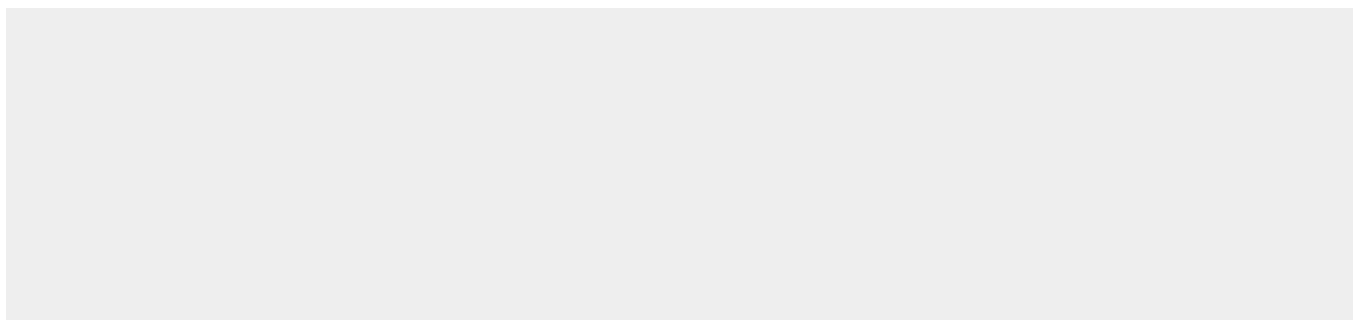
Tissue Location

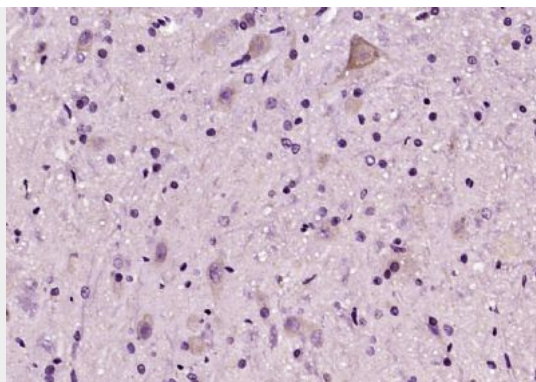
Mainly expressed in hepatocytes and some weak expression in germinal center cells of lymph nodes

C6orf120 Polyclonal Antibody - Protocols

Provided below are standard protocols that you may find useful for product applications.

- [Western Blot](#)
- [Blocking Peptides](#)
- [Dot Blot](#)
- [Immunohistochemistry](#)
- [Immunofluorescence](#)
- [Immunoprecipitation](#)
- [Flow Cytometry](#)
- [Cell Culture](#)

C6orf120 Polyclonal Antibody - Images



Paraformaldehyde-fixed, paraffin embedded (rat brain tissue); Antigen retrieval by boiling in sodium citrate buffer (pH6.0) for 15min; Block endogenous peroxidase by 3% hydrogen peroxide for 20 minutes; Blocking buffer (normal goat serum) at 37°C for 30min; Antibody incubation with (C6orf120) Polyclonal Antibody, Unconjugated (bs-9534R) at 1:200 overnight at 4°C, followed by operating according to SP Kit(Rabbit) (sp-0023) instructions and DAB staining.