

RCL Antibody (N-term)
Affinity Purified Rabbit Polyclonal Antibody (Pab)
Catalog # AP5930a**Specification**

RCL Antibody (N-term) - Product Information

Application	FC, WB,E
Primary Accession	O43598
Other Accession	NP_006434.1 , NP_954653.1
Reactivity	Human
Host	Rabbit
Clonality	Polyclonal
Isotype	Rabbit IgG
Calculated MW	19108
Antigen Region	20-48

RCL Antibody (N-term) - Additional Information**Gene ID** 10591**Other Names**

2'-deoxynucleoside 5'-phosphate N-hydrolase 1 {ECO:0000255|HAMAP-Rule:MF_03036}, 322-
{ECO:0000255|HAMAP-Rule:MF_03036, ECO:0000269|PubMed:24260472,
ECO:0000269|PubMed:25108359}, c-Myc-responsive protein RCL
{ECO:0000255|HAMAP-Rule:MF_03036}, DNPH1 {ECO:0000255|HAMAP-Rule:MF_03036}

Target/Specificity

This RCL antibody is generated from rabbits immunized with a KLH conjugated synthetic peptide between 20-48 amino acids from the N-terminal region of human RCL.

Dilution

FC~~1:10~50

WB~~1:1000

E~~Use at an assay dependent concentration.

Format

Purified polyclonal antibody supplied in PBS with 0.09% (W/V) sodium azide. This antibody is purified through a protein A column, followed by peptide affinity purification.

Storage

Maintain refrigerated at 2-8°C for up to 2 weeks. For long term storage store at -20°C in small aliquots to prevent freeze-thaw cycles.

Precautions

RCL Antibody (N-term) is for research use only and not for use in diagnostic or therapeutic procedures.

RCL Antibody (N-term) - Protein Information

Name DNPH1 ([HGNC:21218](#))

Function Part of a nucleotide salvage pathway that eliminates epigenetically modified 5-hydroxymethyl-dCMP (hmdCMP) in a two-step process entailing deamination to cytotoxic 5-hydroxymethyl-dUMP (hmdUMP), followed by its hydrolysis into 5-hydroxymethyluracil (hmU) and 2-deoxy-D-ribose 5-phosphate (deoxyribosephosphate) (PubMed:[33833118](#)). Catalyzes the second step in that pathway, the hydrolysis of the N-glycosidic bond in hmdUMP, degrading this cytotoxic nucleotide to avoid its genomic integration (PubMed:[33833118](#)).

Cellular Location

Cytoplasm. Nucleus

Tissue Location

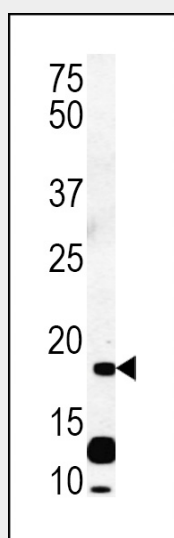
Expressed at low levels in brain, colon, lung, peripheral blood leukocytes, placenta, small intestine, and thymus Expressed at high levels in heart, kidney, liver, skeletal muscle and spleen.
Overexpressed in a significant proportion of breast cancers

RCL Antibody (N-term) - Protocols

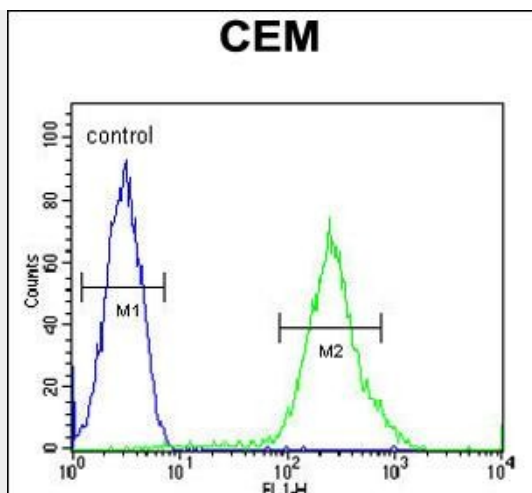
Provided below are standard protocols that you may find useful for product applications.

- [Western Blot](#)
- [Blocking Peptides](#)
- [Dot Blot](#)
- [Immunohistochemistry](#)
- [Immunofluorescence](#)
- [Immunoprecipitation](#)
- [Flow Cytometry](#)
- [Cell Culture](#)

RCL Antibody (N-term) - Images



RCL Antibody (N-term) (Cat. #AP5930a) western blot analysis in CEM cell line lysates (35ug/lane). This demonstrates the RCL antibody detected the RCL protein (arrow).



RCL Antibody (N-term) (Cat. #AP5930a) flow cytometric analysis of CEM cells (right histogram) compared to a negative control cell (left histogram). FITC-conjugated goat-anti-rabbit secondary antibodies were used for the analysis.