

**XTP4 Polyclonal Antibody**  
**Purified Rabbit Polyclonal Antibody (Pab)**  
**Catalog # AP59319****Specification**

---

**XTP4 Polyclonal Antibody - Product Information**

Application	IHC-P, IHC-F, IF, ICC, E
Primary Accession	<a href="#">Q9BRT3</a>
Reactivity	Rat, Pig, Dog, Bovine
Host	Rabbit
Clonality	Polyclonal
Calculated MW	12403

**XTP4 Polyclonal Antibody - Additional Information****Gene ID** 84299**Other Names**

Migration and invasion enhancer 1, HBV X-transactivated gene 4 protein, HBV XAg-transactivated protein 4, Protein C35, MIEN1, C17orf37, RDX12, XTP4

**Dilution**

IHC-P ~ ~ N/A  
IHC-F ~ ~ N/A  
IF ~ ~ 1:50 ~ 200  
ICC ~ ~ N/A  
E ~ ~ N/A

**Format**

0.01M TBS(pH7.4), 0.09% (W/V) sodium azide and 50% Glyce

**Storage**

Store at -20 °C for one year. Avoid repeated freeze/thaw cycles. When reconstituted in sterile pH 7.4 0.01M PBS or diluent of antibody the antibody is stable for at least two weeks at 2-4 °C.

**XTP4 Polyclonal Antibody - Protein Information****Name** MIEN1**Synonyms** C17orf37, RDX12, XTP4**Function**

Increases cell migration by inducing filopodia formation at the leading edge of migrating cells. Plays a role in regulation of apoptosis, possibly through control of CASP3. May be involved in a redox-related process.

**Cellular Location**

Cytoplasm, cytosol. Cell membrane; Lipid-anchor; Cytoplasmic side. Note=Concentrates at the leading edge of migrating cells. Localizes outside membrane raft regions

### Tissue Location

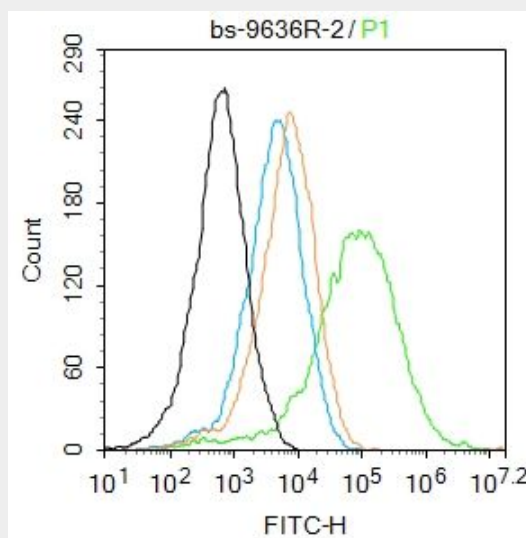
Among normal tissues, present only in Leydig cells. Strongly up-regulated in breast cancers and in brain cancer distant metastasis (at protein level). Up-regulated in prostate cancer cells and in the higher grades of prostate adenocarcinoma (at protein level)

### XTP4 Polyclonal Antibody - Protocols

Provided below are standard protocols that you may find useful for product applications.

- [Western Blot](#)
- [Blocking Peptides](#)
- [Dot Blot](#)
- [Immunohistochemistry](#)
- [Immunofluorescence](#)
- [Immunoprecipitation](#)
- [Flow Cytometry](#)
- [Cell Culture](#)

### XTP4 Polyclonal Antibody - Images



Blank control: Mouse kidney.

Primary Antibody (green line): Rabbit Anti-XTP4 antibody (bs-9636R)

Dilution: 2 µg /10<sup>6</sup> cells;

Isotype Control Antibody (orange line): Rabbit IgG .

Secondary Antibody : Goat anti-rabbit IgG-AF488

Dilution: 1 µg /test.

Protocol

The cells were fixed with 4% PFA (10min at room temperature) and then permeabilized with 0.1% PBST for 20 min at room temperature. The cells were then incubated in 5% BSA to block non-specific protein-protein interactions for 30 min at room temperature. Cells stained with Primary Antibody for 30 min at room temperature. The secondary antibody used for 40 min at room temperature. Acquisition of 20,000 events was performed.