

C19orf28 Polyclonal Antibody
Purified Rabbit Polyclonal Antibody (Pab)
Catalog # AP59342**Specification****C19orf28 Polyclonal Antibody - Product Information**

Application	IHC-P, IHC-F, IF, ICC, E
Primary Accession	Q6NUT3
Host	Rabbit
Clonality	Polyclonal
Calculated MW	52075

C19orf28 Polyclonal Antibody - Additional Information**Gene ID** 126321**Other Names**

Major facilitator superfamily domain-containing protein 12, MFSD12
{ECO:0000303|PubMed:29025994, ECO:0000312|HGNC:HGNC:28299}

Dilution

IHC-P~~N/A<br \>IHC-F~~N/A<br \>IF~~1:50~200<br \>ICC~~N/A<br \>E~~N/A

Format

0.01M TBS(pH7.4), 0.09% (W/V) sodium azide and 50% Glyce

Storage

Store at -20 °C for one year. Avoid repeated freeze/thaw cycles. When reconstituted in sterile pH 7.4 0.01M PBS or diluent of antibody the antibody is stable for at least two weeks at 2-4 °C.

C19orf28 Polyclonal Antibody - Protein Information**Name** MFSD12 {ECO:0000303|PubMed:29025994, ECO:0000312|HGNC:HGNC:28299}**Function**

Transporter that mediates the import of cysteine into melanosomes, thereby regulating skin pigmentation (PubMed:33208952, PubMed:37751742). In melanosomes, cysteine import is required both for normal levels of cystine, the oxidized dimer of cysteine, and provide cysteine for the production of the cysteinyl dopas used in pheomelanin synthesis, thereby regulating skin pigmentation (PubMed:33208952). Also catalyzes import of cysteine into lysosomes in non-pigmented cells, regulating lysosomal cystine and cysteine storage, which is essential for redox homeostasis (PubMed:33208952, PubMed:33208952).

href="http://www.uniprot.org/citations/37751742" target="_blank">37751742).

Cellular Location

Melanosome membrane; Multi-pass membrane protein. Lysosome membrane; Multi-pass membrane protein

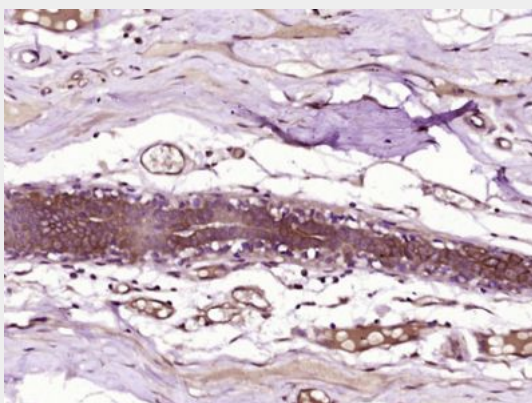
Tissue Location

Widely expressed, with high expression in primary melanocytes.

C19orf28 Polyclonal Antibody - Protocols

Provided below are standard protocols that you may find useful for product applications.

- [Western Blot](#)
- [Blocking Peptides](#)
- [Dot Blot](#)
- [Immunohistochemistry](#)
- [Immunofluorescence](#)
- [Immunoprecipitation](#)
- [Flow Cytometry](#)
- [Cell Culture](#)

C19orf28 Polyclonal Antibody - Images

Paraformaldehyde-fixed, paraffin embedded (Human breast carcinoma); Antigen retrieval by boiling in sodium citrate buffer (pH6.0) for 15min; Block endogenous peroxidase by 3% hydrogen peroxide for 20 minutes; Blocking buffer (normal goat serum) at 37°C for 30min; Antibody incubation with (C19orf28) Polyclonal Antibody, Unconjugated (bs-9680R) at 1:400 overnight at 4°C, followed by operating according to SP Kit(Rabbit) (sp-0023) instructions and DAB staining.