

C20orf132 Polyclonal Antibody
Purified Rabbit Polyclonal Antibody (Pab)
Catalog # AP59348

Specification

C20orf132 Polyclonal Antibody - Product Information

Application	WB, IHC-P, IHC-F, IF, ICC, E
Primary Accession	Q9H579
Reactivity	Rat, Bovine
Host	Rabbit
Clonality	Polyclonal
Calculated MW	55 KDa
Physical State	Liquid
Immunogen	KLH conjugated synthetic peptide derived from human C20orf132
Epitope Specificity	401-483/483
Isotype	IgG
Purity	
affinity purified by Protein A	
Buffer	0.01M TBS (pH7.4) with 1% BSA, 0.02% Proclin300 and 50% Glycerol.
Important Note	This product as supplied is intended for research use only, not for use in human, therapeutic or diagnostic applications.

Background Descriptions

Representing about 2% of human DNA, chromosome 20 consists of approximately 63 million bases and 600 genes. Chromosome 20 contains a region with numerous genes expressed in the epididymis, which are thought important for seminal production, and some viewed as potential targets for male contraception. The PRNP gene encoding the prion protein associated with spongiform encephalopathies, like Creutzfeldt-Jakob disease, is found on chromosome 20. Amyotrophic lateral sclerosis, spinal muscular atrophy, ring chromosome 20 epilepsy syndrome and Alagille syndrome are also associated with chromosome 20. The C20orf132 gene product has been provisionally designated C20orf132 pending further characterization.

C20orf132 Polyclonal Antibody - Additional Information

Gene ID 140699

Other Names

Protein MROH8, Maestro heat-like repeat-containing protein family member 8, MROH8, C20orf131, C20orf132

Dilution

WB~~1:1000<br \>IHC-P~~N/A<br \>IHC-F~~N/A<br \>IF~~1:50~200<br \>ICC~~N/A<br \>E~~N/A

Format

0.01M TBS(pH7.4), 0.09% (W/V) sodium azide and 50% Glyce

Storage

Store at -20 °C for one year. Avoid repeated freeze/thaw cycles. When reconstituted in sterile pH 7.4 0.01M PBS or diluent of antibody the antibody is stable for at least two weeks at 2-4 °C.

C20orf132 Polyclonal Antibody - Protein Information

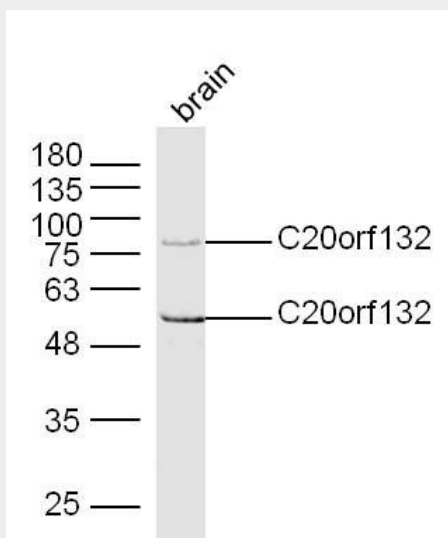
Name MROH8

Synonyms C20orf131, C20orf132

C20orf132 Polyclonal Antibody - Protocols

Provided below are standard protocols that you may find useful for product applications.

- [Western Blot](#)
- [Blocking Peptides](#)
- [Dot Blot](#)
- [Immunohistochemistry](#)
- [Immunofluorescence](#)
- [Immunoprecipitation](#)
- [Flow Cytometry](#)
- [Cell Culture](#)

C20orf132 Polyclonal Antibody - Images

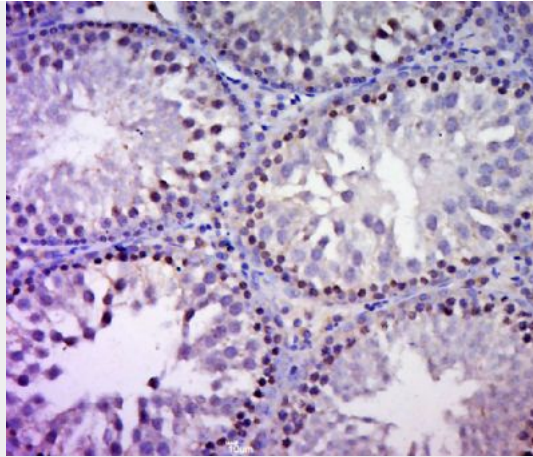
Sample: Brain (Mouse) Lysate at 40 ug

Primary: Anti-C20orf132 (bs-9694R) at 1/300 dilution

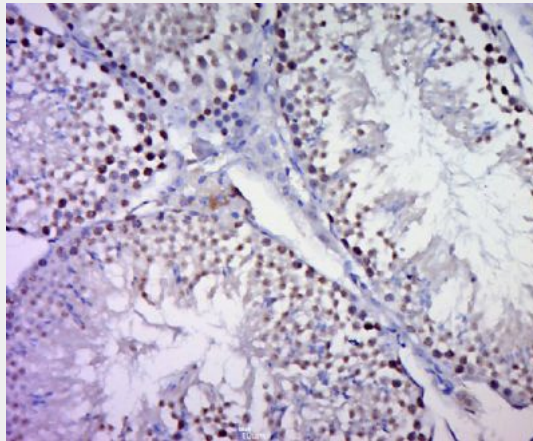
Secondary: IRDye800CW Goat Anti-Rabbit IgG at 1/20000 dilution

Predicted band size: 55/99 kD

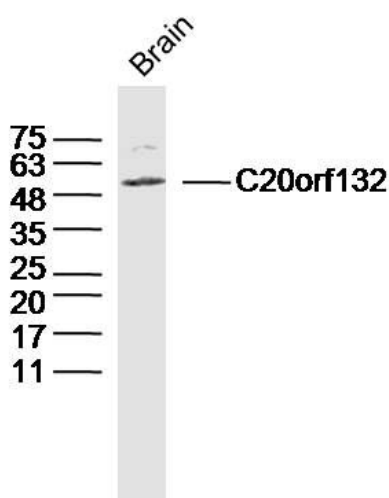
Observed band size: 55/95 kD



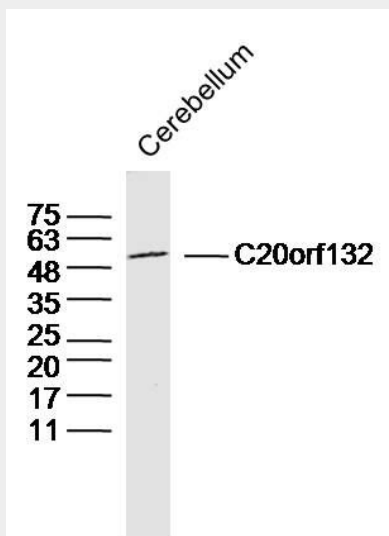
Paraformaldehyde-fixed, paraffin embedded (Rat testis); Antigen retrieval by boiling in sodium citrate buffer (pH6.0) for 15min; Block endogenous peroxidase by 3% hydrogen peroxide for 20 minutes; Blocking buffer (normal goat serum) at 37°C for 30min; Antibody incubation with (C20orf132) Polyclonal Antibody, Unconjugated (bs-9694R) at 1:500 overnight at 4°C, followed by a conjugated secondary (sp-0023) for 20 minutes and DAB staining.



Paraformaldehyde-fixed, paraffin embedded (Mouse testis); Antigen retrieval by boiling in sodium citrate buffer (pH6.0) for 15min; Block endogenous peroxidase by 3% hydrogen peroxide for 20 minutes; Blocking buffer (normal goat serum) at 37°C for 30min; Antibody incubation with (C20orf132) Polyclonal Antibody, Unconjugated (bs-9694R) at 1:500 overnight at 4°C, followed by a conjugated secondary (sp-0023) for 20 minutes and DAB staining.



Sample: Brain (Mouse) Lysate at 40 ug
Primary: Anti-C20orf132 (bs-9694R) at 1/300 dilution
Secondary: IRDye800CW Goat Anti-Rabbit IgG at 1/20000 dilution
Predicted band size: 55kD
Observed band size: 55kD



Sample: Cerebellum (Mouse) Lysate at 40 ug
Primary: Anti-C20orf132 (bs-9694R) at 1/300 dilution
Secondary: IRDye800CW Goat Anti-Rabbit IgG at 1/20000 dilution
Predicted band size: 55kD
Observed band size: 55kD