

**HECA Polyclonal Antibody**  
**Purified Rabbit Polyclonal Antibody (Pab)**  
**Catalog # AP59353****Specification**

---

**HECA Polyclonal Antibody - Product Information**

Application	WB, IHC-P, IHC-F, IF, E
Primary Accession	<a href="#">Q9UBI9</a>
Reactivity	Rat, Pig, Dog, Bovine
Host	Rabbit
Clonality	Polyclonal
Calculated MW	59 KDa
Physical State	Liquid
Immunogen	KLH conjugated synthetic peptide derived from human HECA
Epitope Specificity	231-330/543
Isotype	IgG
<b>Purity</b>	
affinity purified by Protein A	
Buffer	0.01M TBS (pH7.4) with 1% BSA, 0.02% Proclin300 and 50% Glycerol.
Important Note	This product as supplied is intended for research use only, not for use in human, therapeutic or diagnostic applications.

**Background Descriptions**

HECA, also known as headcase homolog, HDC, HDCL or HHDC, is a 543 amino acid mammalian homolog of the Drosophila headcase protein, a highly basic, cytoplasmic peptide that plays a role in mitotic re-entry during adult morphogenesis. Expressed in a variety of tissues with highest expression in thymus, spleen and heart, HECA is thought to play a role in the development of epithelial tube networks in lung tissue and may also be involved in the pathogenesis of lung cancer. The gene encoding HECA maps to human chromosome 6, which contains 170 million base pairs and comprises nearly 6% of the human genome. Deletion of a portion of the q arm of chromosome 6 is associated with early onset intestinal cancer, suggesting the presence of a cancer susceptibility locus. Additionally, Porphyria cutanea tarda, Parkinson's disease, Stickler syndrome and a susceptibility to bipolar disorder are all associated with genes that map to chromosome 6.

**HECA Polyclonal Antibody - Additional Information****Gene ID** 51696**Other Names**

Headcase protein homolog, hHDC, HECA, HDC

**Target/Specificity**

Expressed in all tissues examined. Highest levels are in the spleen, thymus, peripheral blood and heart. Lowest in the kidney and pancreas.

**Dilution**

WB~1:1000  
IHC-P~N/A  
IHC-F~N/A  
IF~1:50~200  
E~N/A

**Format**

0.01M TBS(pH7.4), 0.09% (W/V) sodium azide and 50% Glyce

**Storage**

Store at -20 °C for one year. Avoid repeated freeze/thaw cycles. When reconstituted in sterile pH 7.4 0.01M PBS or diluent of antibody the antibody is stable for at least two weeks at 2-4 °C.

**HECA Polyclonal Antibody - Protein Information**

**Name** HECA

**Synonyms** HDC

**Function**

May play an important role in some human cancers. May be part of the regulatory mechanism in the development of epithelial tube networks such as the circulatory system and lungs.

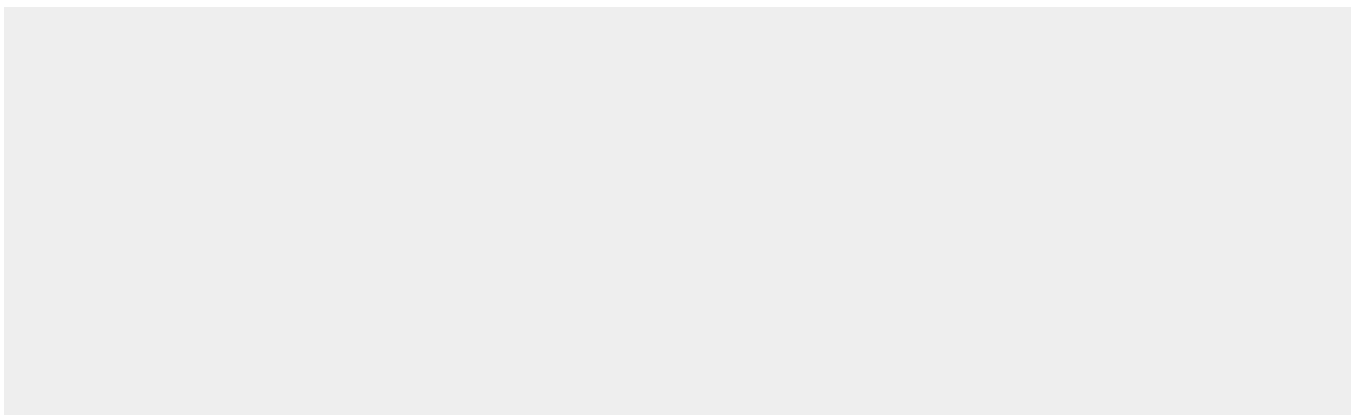
**Tissue Location**

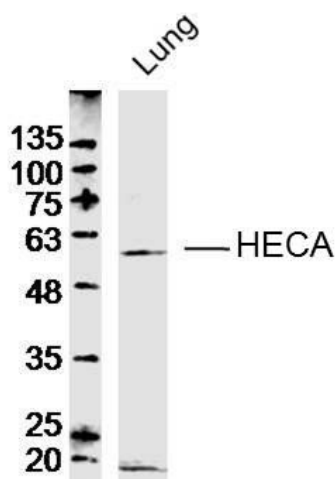
Expressed in all tissues examined. Highest levels are in the spleen, thymus, peripheral blood and heart. Lowest in the kidney and pancreas.

**HECA Polyclonal Antibody - Protocols**

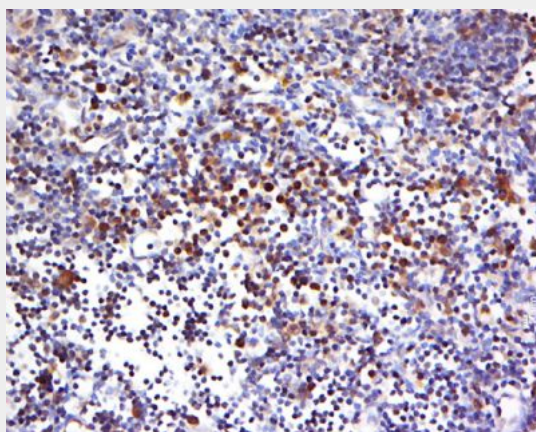
Provided below are standard protocols that you may find useful for product applications.

- [Western Blot](#)
- [Blocking Peptides](#)
- [Dot Blot](#)
- [Immunohistochemistry](#)
- [Immunofluorescence](#)
- [Immunoprecipitation](#)
- [Flow Cytometry](#)
- [Cell Culture](#)

**HECA Polyclonal Antibody - Images**



Sample: Lung (Rat) Lysate at 40 ug  
Primary: Anti-HECA (bs-9702R) at 1/300 dilution  
Secondary: IRDye800CW Goat Anti-Rabbit IgG at 1/20000 dilution  
Predicted band size: 59 kD  
Observed band size: 59 kD



Tissue/cell: rat pancreas tissue; 4% Paraformaldehyde-fixed and paraffin-embedded;  
Antigen retrieval: citrate buffer ( 0.01M, pH 6.0 ), Boiling bathing for 15min; Block endogenous peroxidase by 3% Hydrogen peroxide for 30min; Blocking buffer (normal goat serum,C-0005) at 37°C for 20 min;  
Incubation: Anti-HECA Polyclonal Antibody, Unconjugated(bs-9702R) 1:500, overnight at 4°C, followed by conjugation to the secondary antibody(SP-0023) and DAB(C-0010) staining