

TBATA Polyclonal Antibody
Purified Rabbit Polyclonal Antibody (Pab)
Catalog # AP59359**Specification****TBATA Polyclonal Antibody - Product Information**

Application	WB, IHC-P, IHC-F, IF, E
Primary Accession	Q96M53
Reactivity	Rat, Pig, Bovine, Dog
Host	Rabbit
Clonality	Polyclonal
Calculated MW	39 KDa
Physical State	Liquid
Immunogen	KLH conjugated synthetic peptide derived from human C10orf27/SPATIAL
Epitope Specificity	31-130/351
Isotype	IgG
Purity	
affinity purified by Protein A	
Buffer	0.01M TBS (pH7.4) with 1% BSA, 0.02% Proclin300 and 50% Glycerol.
SUBCELLULAR LOCATION	Cytoplasm,
SIMILARITY	Belongs to the TBATA family.
Important Note	This product as supplied is intended for research use only, not for use in human, therapeutic or diagnostic applications.

Background Descriptions

C10orf27, also known as spatial, is a 351 amino acid cytoplasmic protein belonging to the spatial family. C10orf27 is suggested to play a role in spermatid differentiation. Existing as two alternatively spliced isoforms, C10orf27 is widely expressed in multiple tissues, including brain, thymus and testis. C10orf27 may be associated with multiple sclerosis (MS) susceptibility and pathogenesis. MS is an inflammatory disease that causes gradual destruction of myelin in the central nervous system. C10orf27 is encoded by a gene located on human chromosome 10, which contains over 800 genes and 135 million nucleotides, making up nearly 4.5% of the human genome. PTEN is an important tumor suppressor gene located on chromosome 10 and, when defective, causes a genetic predisposition to cancer development known as Cowden syndrome.

TBATA Polyclonal Antibody - Additional Information**Gene ID** 219793**Other Names**

Protein TBATA, Protein SPATIAL, Stromal protein associated with thymii and lymph node homolog, Thymus, brain and testes-associated protein, TBATA, C10orf27, SPATIAL

Dilution

WB~~1:1000<br \>IHC-P~~N/A<br \><span class

=>IHC-F~N/A<br \><span class
=>IF~1:50~200<br \>E~N/A

Storage

Store at -20 °C for one year. Avoid repeated freeze/thaw cycles. When reconstituted in sterile pH 7.4 0.01M PBS or diluent of antibody the antibody is stable for at least two weeks at 2-4 °C.

TBATA Polyclonal Antibody - Protein Information

Name TBATA

Synonyms C10orf27, SPATIAL

Function

May play a role in spermatid differentiation. Modulates thymic stromal cell proliferation and thymus function.

Cellular Location

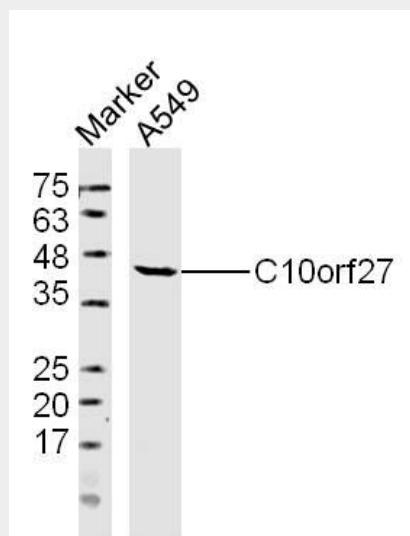
Cytoplasm, cytosol.

TBATA Polyclonal Antibody - Protocols

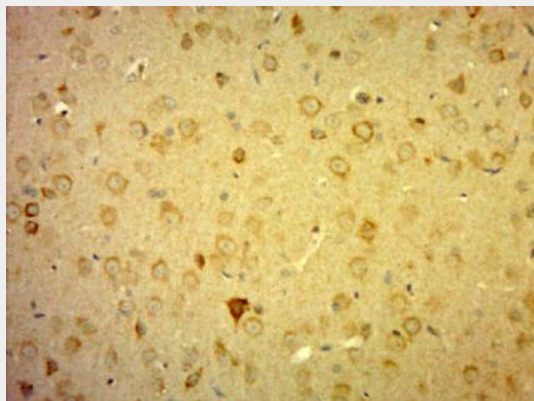
Provided below are standard protocols that you may find useful for product applications.

- [Western Blot](#)
- [Blocking Peptides](#)
- [Dot Blot](#)
- [Immunohistochemistry](#)
- [Immunofluorescence](#)
- [Immunoprecipitation](#)
- [Flow Cytometry](#)
- [Cell Culture](#)

TBATA Polyclonal Antibody - Images



Sample: A549 Cell (Human) Lysate at 40 ug
Primary: Anti-C10orf27 (bs-9720R) at 1/300 dilution
Secondary: IRDye800CW Goat Anti-Rabbit IgG at 1/20000 dilution
Predicted band size: 39 kD
Observed band size: 42 kD



Paraformaldehyde-fixed, paraffin embedded (Rat brain); Antigen retrieval by boiling in sodium citrate buffer (pH6.0) for 15min; Block endogenous peroxidase by 3% hydrogen peroxide for 20 minutes; Blocking buffer (normal goat serum) at 37°C for 30min; Antibody incubation with (C10orf27) Polyclonal Antibody, Unconjugated (bs-9720R) at 1:500 overnight at 4°C, followed by a conjugated secondary (sp-0023) for 20 minutes and DAB staining.