

**BIN2 Polyclonal Antibody**  
**Purified Rabbit Polyclonal Antibody (Pab)**  
**Catalog # AP59363****Specification**

---

**BIN2 Polyclonal Antibody - Product Information**

Application	WB, IHC-P
Primary Accession	<a href="#">O9UBW5</a>
Reactivity	Rat, Pig, Dog, Bovine
Host	Rabbit
Clonality	Polyclonal
Calculated MW	61874

**BIN2 Polyclonal Antibody - Additional Information****Gene ID** 51411**Other Names**

Bridging integrator 2, Breast cancer-associated protein 1, BIN2, BRAP1

**Format**

0.01M TBS(pH7.4), 0.09% (W/V) sodium azide and 50% Glyce

**Storage**

Store at -20 °C for one year. Avoid repeated freeze/thaw cycles. When reconstituted in sterile pH 7.4 0.01M PBS or diluent of antibody the antibody is stable for at least two weeks at 2-4 °C.

**BIN2 Polyclonal Antibody - Protein Information****Name** BIN2**Synonyms** BRAP1**Function**

Promotes cell motility and migration, probably via its interaction with the cell membrane and with podosome proteins that mediate interaction with the cytoskeleton. Modulates membrane curvature and mediates membrane tubulation. Plays a role in podosome formation. Inhibits phagocytosis.

**Cellular Location**

Cytoplasm. Cell projection, podosome membrane; Peripheral membrane protein; Cytoplasmic side. Cytoplasm, cell cortex. Cell projection, phagocytic cup. Note=Associates with membranes enriched in phosphoinositides. Detected in the actin-rich cell cortex at the leading edge of migrating cells. Detected at podosomes, at an actin- rich ring-like structure.

**Tissue Location**

Detected in natural killer cells (at protein level). Highest level expression seen in spleen and peripheral blood leukocytes and is also expressed at high levels in thymus, colon and placenta,

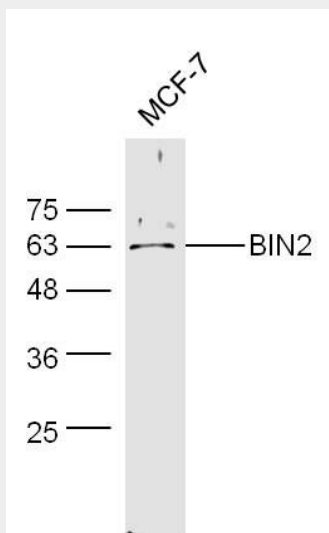
suggesting preferential expression in hematopoietic tissues

### **BIN2 Polyclonal Antibody - Protocols**

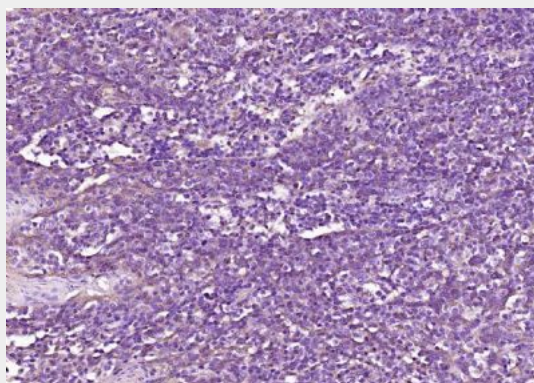
Provided below are standard protocols that you may find useful for product applications.

- [Western Blot](#)
- [Blocking Peptides](#)
- [Dot Blot](#)
- [Immunohistochemistry](#)
- [Immunofluorescence](#)
- [Immunoprecipitation](#)
- [Flow Cytometry](#)
- [Cell Culture](#)

### **BIN2 Polyclonal Antibody - Images**



Sample: MCF-7 Cell (Human) Lysate at 40 ug  
Primary: Anti-BIN2 (bs-9727R) at 1/300 dilution  
Secondary: IRDye800CW Goat Anti-Rabbit IgG at 1/20000 dilution  
Predicted band size: 62 kD  
Observed band size: 63 kD



Paraformaldehyde-fixed, paraffin embedded (human tonsil); Antigen retrieval by boiling in sodium citrate buffer (pH6.0) for 15min; Block endogenous peroxidase by 3% hydrogen peroxide for 20 minutes; Blocking buffer (normal goat serum) at 37°C for 30min; Antibody incubation with (BIN2) Polyclonal Antibody, Unconjugated (bs-9727R) at 1:200 overnight at 4°C, followed by operating according to SP Kit(Rabbit) (sp-0023) instructions and DAB staining.