

CNTD Polyclonal Antibody
Purified Rabbit Polyclonal Antibody (Pab)
Catalog # AP59368**Specification****CNTD Polyclonal Antibody - Product Information**

Application	WB, IHC-P, IHC-F, IF, E
Primary Accession	Q8N815
Reactivity	Rat, Pig, Bovine
Host	Rabbit
Clonality	Polyclonal
Calculated MW	37 KDa
Physical State	Liquid
Immunogen	KLH conjugated synthetic peptide derived from human CNTD
Epitope Specificity	1-100/330
Isotype	IgG
Purity	
affinity purified by Protein A	
Buffer	0.01M TBS (pH7.4) with 1% BSA, 0.02% Proclin300 and 50% Glycerol.
SIMILARITY	Contains 1 cyclin N-terminal domain.
Important Note	This product as supplied is intended for research use only, not for use in human, therapeutic or diagnostic applications.

Background Descriptions

No data available.

CNTD Polyclonal Antibody - Additional Information

Gene ID 124817

Other Names

Cyclin N-terminal domain-containing protein 1, CNTD1, CNTD

Dilution

WB~1:1000
IHC-P~N/A
IHC-F~N/A
IF~1:50~200
E~N/A

Format

0.01M TBS(pH7.4), 0.09% (W/V) sodium azide and 50% Glyce

Storage

Store at -20 °C for one year. Avoid repeated freeze/thaw cycles. When reconstituted in sterile pH 7.4 0.01M PBS or diluent of antibody the antibody is stable for at least two weeks at 2-4 °C.

CNTD Polyclonal Antibody - Protein Information

Name CNTD1 ([HGNC:26847](#))

Synonyms CNTD

Function

Plays a role in the different steps of crossover formation during meiotic recombination. Participates in the crossover differentiation step of crossover-specific recombination intermediates through its interaction with PRR19. In addition, stimulates crossover formation through the interactions with RFC3 and RFC4 and simultaneously regulates cell-cycle progression through interactions with CDC34 and subsequent ubiquitination of WEE1. May also participates in an active deselection process that destabilizes or removes excess pre-CO intermediates.

Cellular Location

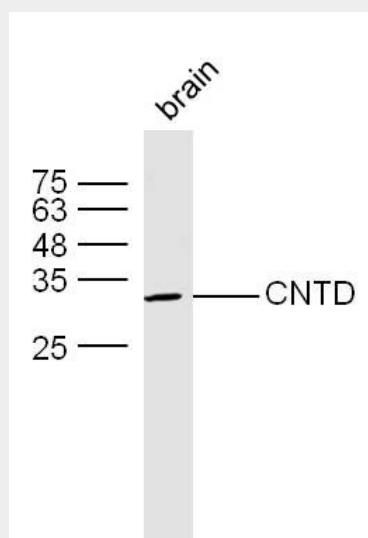
Nucleus {ECO:0000250|UniProtKB:Q9D995}. Cytoplasm {ECO:0000250|UniProtKB:Q9D995}. Chromosome {ECO:0000250|UniProtKB:Q9D995}. Note=Shuttles between the nucleus and cytoplasm in a stage-specific manner of prophase I cells. Co-localized at crossover sites with PRR19. {ECO:0000250|UniProtKB:Q9D995}

CNTD Polyclonal Antibody - Protocols

Provided below are standard protocols that you may find useful for product applications.

- [Western Blot](#)
- [Blocking Peptides](#)
- [Dot Blot](#)
- [Immunohistochemistry](#)
- [Immunofluorescence](#)
- [Immunoprecipitation](#)
- [Flow Cytometry](#)
- [Cell Culture](#)

CNTD Polyclonal Antibody - Images



Sample: Brain (Mouse) Lysate at 40 ug
Primary: Anti-CNTD (bs-9739R) at 1/300 dilution
Secondary: IRDye800CW Goat Anti-Rabbit IgG at 1/20000 dilution
Predicted band size: 37 kD
Observed band size: 34 kD