

ANKLE2 Polyclonal Antibody
Purified Rabbit Polyclonal Antibody (Pab)
Catalog # AP59371**Specification**

ANKLE2 Polyclonal Antibody - Product Information

Application	WB
Primary Accession	Q86XL3
Reactivity	Rat, Bovine
Host	Rabbit
Clonality	Polyclonal
Calculated MW	104114

ANKLE2 Polyclonal Antibody - Additional Information**Gene ID** 23141**Other Names**

Ankyrin repeat and LEM domain-containing protein 2, LEM domain-containing protein 4, ANKLE2, KIAA0692, LEM4

Format

0.01M TBS(pH7.4), 0.09% (W/V) sodium azide and 50% Glyce

Storage

Store at -20 °C for one year. Avoid repeated freeze/thaw cycles. When reconstituted in sterile pH 7.4 0.01M PBS or diluent of antibody the antibody is stable for at least two weeks at 2-4 °C.

ANKLE2 Polyclonal Antibody - Protein Information**Name** ANKLE2**Synonyms** KIAA0692, LEM4**Function**

Involved in mitotic nuclear envelope reassembly by promoting dephosphorylation of BAF/BANF1 during mitotic exit (PubMed:22770216). Coordinates the control of BAF/BANF1 dephosphorylation by inhibiting VRK1 kinase and promoting dephosphorylation of BAF/BANF1 by protein phosphatase 2A (PP2A), thereby facilitating nuclear envelope assembly (PubMed:22770216). May regulate nuclear localization of VRK1 in non- dividing cells (PubMed:31735666). It is unclear whether it acts as a real PP2A regulatory subunit or whether it is involved in recruitment of the PP2A complex (PubMed:22770216). Involved in brain development (PubMed:25259927).

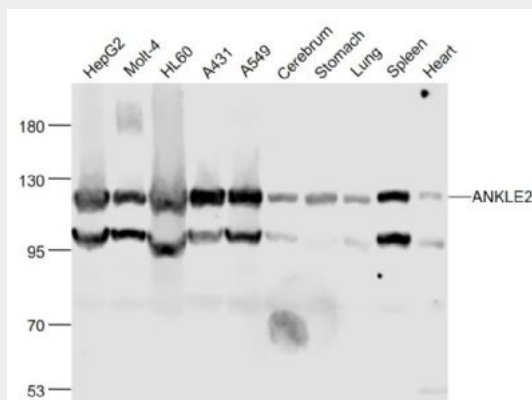
Cellular Location

Endoplasmic reticulum membrane; Single-pass type III membrane protein

ANKLE2 Polyclonal Antibody - Protocols

Provided below are standard protocols that you may find useful for product applications.

- [Western Blot](#)
- [Blocking Peptides](#)
- [Dot Blot](#)
- [Immunohistochemistry](#)
- [Immunofluorescence](#)
- [Immunoprecipitation](#)
- [Flow Cytometry](#)
- [Cell Culture](#)

ANKLE2 Polyclonal Antibody - Images**Sample:**

HepG2(Human) Cell Lysate at 30 ug
Molt-4(Human) Cell Lysate at 30 ug
HL60(Human) Cell Lysate at 30 ug
A431(Human) Cell Lysate at 30 ug
A549(Human) Cell Lysate at 30 ug
Cerebrum (Mouse) Lysate at 40 ug
Stomach (Mouse) Lysate at 40 ug
Lung (Mouse) Lysate at 40 ug
Spleen (Mouse) Lysate at 40 ug
Heart (Mouse) Lysate at 40 ug
Primary: Anti-ANKLE2 (bs-9743R) at 1/1000 dilution
Secondary: IRDye800CW Goat Anti-Rabbit IgG at 1/20000 dilution
Predicted band size: 117 kD
Observed band size: 117 kD