

**C1orf96 Polyclonal Antibody**  
**Purified Rabbit Polyclonal Antibody (Pab)**  
**Catalog # AP59384****Specification**

---

**C1orf96 Polyclonal Antibody - Product Information**

Application	IHC-P, WB
Primary Accession	<a href="#">O6IQ19</a>
Reactivity	Rat, Dog
Host	Rabbit
Clonality	Polyclonal
Calculated MW	30216

**C1orf96 Polyclonal Antibody - Additional Information****Gene ID** 126731**Other Names**

Centriole, cilia and spindle-associated protein, CCSAP, C1orf96, CSAP

**Format**

0.01M TBS(pH7.4), 0.09% (W/V) sodium azide and 50% Glyce

**Storage**

Store at -20 °C for one year. Avoid repeated freeze/thaw cycles. When reconstituted in sterile pH 7.4 0.01M PBS or diluent of antibody the antibody is stable for at least two weeks at 2-4 °C.

**C1orf96 Polyclonal Antibody - Protein Information****Name** CCSAP**Synonyms** C1orf96, CSAP**Function**

Plays a role in microtubule (MT) stabilization and this stabilization involves the maintenance of NUMA1 at the spindle poles. Colocalizes with polyglutamylated MTs to promote MT stabilization and regulate bipolar spindle formation in mitosis. Binding of CCSAP to centrosomes and the spindle around centrosomes during mitosis inhibits MT depolymerization, thereby stabilizing the mitotic spindle (PubMed:<a href="http://www.uniprot.org/citations/26562023" target="\_blank">26562023</a>). May play a role in embryonic development. May be required for proper cilia beating (By similarity).

**Cellular Location**

Cytoplasm, cytoskeleton, microtubule organizing center, centrosome, centriole. Cytoplasm, cytoskeleton, spindle. Cytoplasm, cytoskeleton. Cytoplasm, cytoskeleton, cilium basal body. Cytoplasm, cytoskeleton, cilium axoneme. Cell projection, axon. Cell projection, cilium. Cytoplasm, cytoskeleton, microtubule organizing center, centrosome. Note=Localizes to two to four centrioles throughout the cell cycle. Localizes to mitotic spindle microtubules during prometaphase and

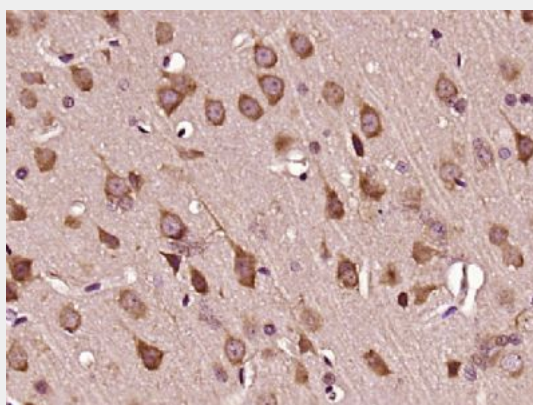
throughout the remainder of mitosis. Localizes to cytoskeleton on interphase. Localizes at the ciliary transition zone which connects the basal bodies to ciliary microtubules. Colocalizes with polyglutamylated tubulin.

### C1orf96 Polyclonal Antibody - Protocols

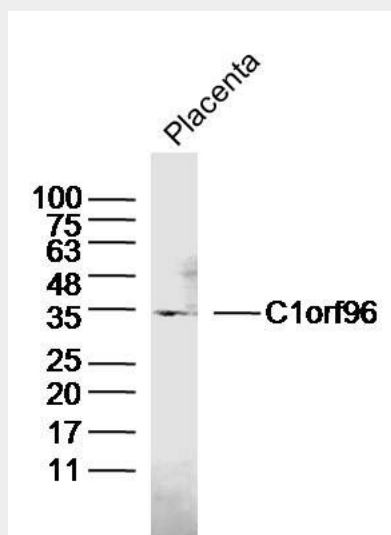
Provided below are standard protocols that you may find useful for product applications.

- [Western Blot](#)
- [Blocking Peptides](#)
- [Dot Blot](#)
- [Immunohistochemistry](#)
- [Immunofluorescence](#)
- [Immunoprecipitation](#)
- [Flow Cytometry](#)
- [Cell Culture](#)

### C1orf96 Polyclonal Antibody - Images



Paraformaldehyde-fixed, paraffin embedded (Rat brain); Antigen retrieval by boiling in sodium citrate buffer (pH6.0) for 15min; Block endogenous peroxidase by 3% hydrogen peroxide for 20 minutes; Blocking buffer (normal goat serum) at 37°C for 30min; Antibody incubation with (C1orf96) Polyclonal Antibody, Unconjugated (bs-9796R) at 1:400 overnight at 4°C, followed by operating according to SP Kit(Rabbit) (sp-0023) instructions and DAB staining.



Sample: Placenta (Mouse) Lysate at 40 ug  
Primary: Anti-C1orf96 (bs-9796R) at 1/300 dilution  
Secondary: IRDye800CW Goat Anti-Rabbit IgG at 1/20000 dilution  
Predicted band size: 30kD  
Observed band size: 34kD