

EGFR5 Polyclonal Antibody
Purified Rabbit Polyclonal Antibody (Pab)
Catalog # AP59390**Specification****EGFR5 Polyclonal Antibody - Product Information**

Application	WB, IHC-P, IHC-F, IF, ICC, E
Primary Accession	Q86T13
Reactivity	Rat
Host	Rabbit
Clonality	Polyclonal
Calculated MW	49 KDa
Physical State	Liquid
Immunogen	KLH conjugated synthetic peptide derived from human EGFR5/CLEC14A
Epitope Specificity	221-320/490
Isotype	IgG
Purity	
affinity purified by Protein A	
Buffer	0.01M TBS (pH7.4) with 1% BSA, 0.02% Proclin300 and 50% Glycerol.
SUBCELLULAR LOCATION	Membrane; Single pass type I membrane protein.
SIMILARITY	Contains 1 C-type lectin domain.Contains 1 EGF-like domain.
Important Note	This product as supplied is intended for research use only, not for use in human, therapeutic or diagnostic applications.

Background Descriptions

This gene encodes a member of the C-type lectin/C-type lectin-like domain (CTL/CTLD) superfamily. Members of this family share a common protein fold and have diverse functions, such as cell adhesion, cell-cell signalling, glycoprotein turnover, and roles in inflammation and immune response. This family member plays a role in cell-cell adhesion and angiogenesis. It functions in filopodia formation, cell migration and tube formation. Due to its presence at higher levels in tumor endothelium than in normal tissue endothelium, it is considered to be a candidate for tumor vascular targeting.

EGFR5 Polyclonal Antibody - Additional Information**Gene ID** 161198**Other Names**

C-type lectin domain family 14 member A, Epidermal growth factor receptor 5, EGFR-5, CLEC14A, C14orf27, EGFR5

Dilution

WB~~1:1000<br \>IHC-P~~N/A<br \><span class

=>IHC-F~~N/A<br \><span class
=>IF~~1:50~200<br \>ICC~~N/A
E~~N/A

Format

0.01M TBS(pH7.4), 0.09% (W/V) sodium azide and 50% Glyce

Storage

Store at -20 °C for one year. Avoid repeated freeze/thaw cycles. When reconstituted in sterile pH 7.4 0.01M PBS or diluent of antibody the antibody is stable for at least two weeks at 2-4 °C.

EGFR5 Polyclonal Antibody - Protein Information

Name CLEC14A

Synonyms C14orf27, EGFR5

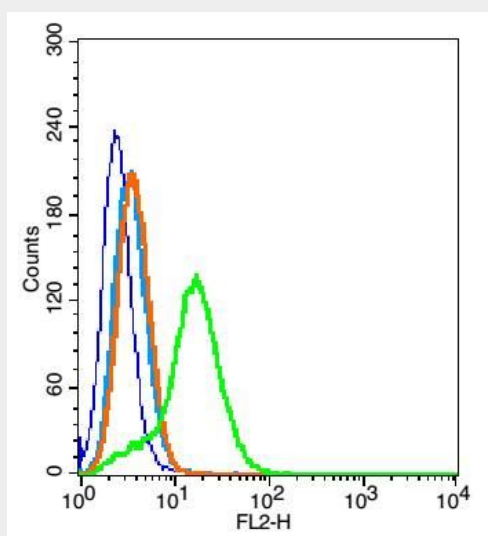
Cellular Location

Membrane; Single-pass type I membrane protein

EGFR5 Polyclonal Antibody - Protocols

Provided below are standard protocols that you may find useful for product applications.

- [Western Blot](#)
- [Blocking Peptides](#)
- [Dot Blot](#)
- [Immunohistochemistry](#)
- [Immunofluorescence](#)
- [Immunoprecipitation](#)
- [Flow Cytometry](#)
- [Cell Culture](#)

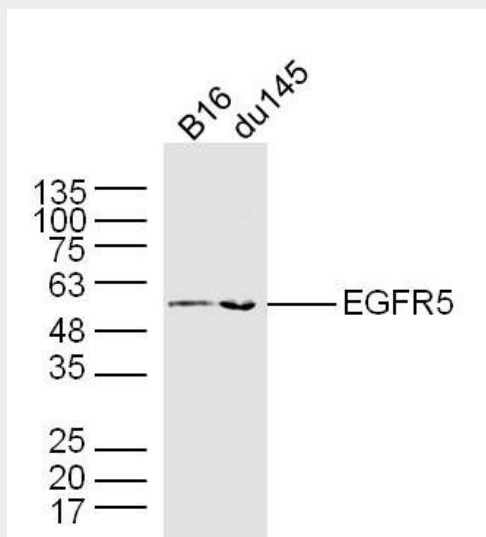
EGFR5 Polyclonal Antibody - Images

Blank control(blue):293T (fixed with 2% paraformaldehyde (10 min)).

Primary Antibody:Rabbit Anti-EGFR5 antibody(bs-9813R), Dilution: 1 μ g in 100 μ L 1X PBS containing 0.5% BSA;

Isotype Control Antibody: Rabbit IgG(orange) ,used under the same conditions);

Secondary Antibody: Goat anti-rabbit IgG-PE(white blue), Dilution: 1:200 in 1 X PBS containing 0.5% BSA.



Sample:

B16 Cell (Mouse) Lysate at 40 ug

DU145 Cell (Human) Lysate at 40 ug

Primary: Anti-EGFR5 (bs-9813R) at 1/300 dilution

Secondary: IRDye800CW Goat Anti-Rabbit IgG at 1/20000 dilution

Predicted band size: 49 kD

Observed band size: 53 kD