

**C2orf43 Polyclonal Antibody**  
**Purified Rabbit Polyclonal Antibody (Pab)**  
**Catalog # AP59393****Specification**

---

**C2orf43 Polyclonal Antibody - Product Information**

|                   |                        |
|-------------------|------------------------|
| Application       | IHC-P, WB              |
| Primary Accession | <a href="#">Q9H6V9</a> |
| Reactivity        | Rat                    |
| Host              | Rabbit                 |
| Clonality         | Polyclonal             |
| Calculated MW     | 37319                  |

**C2orf43 Polyclonal Antibody - Additional Information****Gene ID** 60526**Other Names**

Lipid droplet-associated hydrolase {ECO:0000312|HGNC:HGNC:26145}, 3.1.1.-, Lipid droplet-associated serine hydrolase, hLDAH, LDAH {ECO:0000303|PubMed:24357060, ECO:0000312|HGNC:HGNC:26145}

**Format**

0.01M TBS(pH7.4), 0.09% (W/V) sodium azide and 50% Glyce

**Storage**

Store at -20 °C for one year. Avoid repeated freeze/thaw cycles. When reconstituted in sterile pH 7.4 0.01M PBS or diluent of antibody the antibody is stable for at least two weeks at 2-4 °C.

**C2orf43 Polyclonal Antibody - Protein Information****Name** LDAH {ECO:0000303|PubMed:24357060, ECO:0000312|HGNC:HGNC:26145}**Function**

Probable serine lipid hydrolase associated with lipid droplets. Appears to lack cholesterol esterase activity. Appears to lack triglyceride lipase activity. Highly expressed in macrophage-rich areas in atherosclerotic lesions, suggesting that it could promote cholesterol ester turnover in macrophages.

**Cellular Location**

Lipid droplet. Endoplasmic reticulum {ECO:0000250|UniProtKB:Q8BVA5}. Note=Localizes to the endoplasmic reticulum in absence of lipid droplets and translocates to lipid droplets upon lipid storage induction {ECO:0000250|UniProtKB:Q8BVA5}

**Tissue Location**

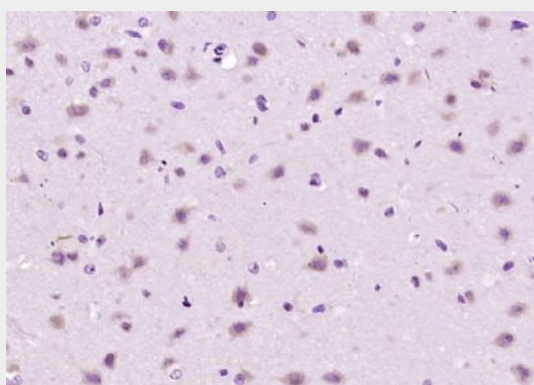
Present in macrophage-rich areas in atherosclerotic lesionsv(at protein level).

## C2orf43 Polyclonal Antibody - Protocols

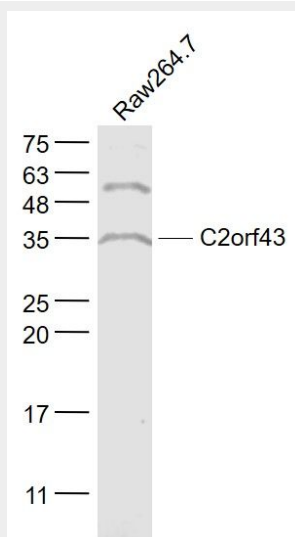
Provided below are standard protocols that you may find useful for product applications.

- [Western Blot](#)
- [Blocking Peptides](#)
- [Dot Blot](#)
- [Immunohistochemistry](#)
- [Immunofluorescence](#)
- [Immunoprecipitation](#)
- [Flow Cytometry](#)
- [Cell Culture](#)

## C2orf43 Polyclonal Antibody - Images



Paraformaldehyde-fixed, paraffin embedded (mouse brain); Antigen retrieval by boiling in sodium citrate buffer (pH6.0) for 15min; Block endogenous peroxidase by 3% hydrogen peroxide for 20 minutes; Blocking buffer (normal goat serum) at 37°C for 30min; Antibody incubation with (C2orf43) Polyclonal Antibody, Unconjugated (bs-9816R) at 1:200 overnight at 4°C, followed by operating according to SP Kit(Rabbit) (sp-0023) instructions and DAB staining.



Sample:

Raw264.7(Mouse) Cell Lysate at 30 ug

Primary: Anti- C2orf43 (bs-9816R) at 1/1000 dilution

Secondary: IRDye800CW Goat Anti-Rabbit IgG at 1/20000 dilution

Predicted band size: 37 kD

Observed band size: 35 kD