

**ESRP1 Antibody (N-term)**  
**Affinity Purified Rabbit Polyclonal Antibody (Pab)**  
**Catalog # AP5940a**

**Specification**

---

**ESRP1 Antibody (N-term) - Product Information**

Application	WB, IHC-P,E
Primary Accession	<a href="#">Q6NXG1</a>
Other Accession	<a href="#">B2RYD2</a> , <a href="#">Q3US41</a> , <a href="#">NP_001116298.1</a> , <a href="#">NP_060167.2</a> , <a href="#">NP_001030087.2</a> , <a href="#">NP_001116299.1</a> , <a href="#">NP_001116297.1</a>
Reactivity	Human
Predicted	Mouse, Rat
Host	Rabbit
Clonality	Polyclonal
Isotype	Rabbit IgG
Antigen Region	182-211

**ESRP1 Antibody (N-term) - Additional Information**

**Gene ID** 54845

**Other Names**

Epithelial splicing regulatory protein 1, RNA-binding motif protein 35A, RNA-binding protein 35A, ESRP1, RBM35A

**Target/Specificity**

This ESRP1 antibody is generated from rabbits immunized with a KLH conjugated synthetic peptide between 182-211 amino acids of human ESRP1.

**Dilution**

WB~~1:2000

IHC-P~~1:25

E~~Use at an assay dependent concentration.

**Format**

Purified polyclonal antibody supplied in PBS with 0.09% (W/V) sodium azide. This antibody is prepared by Saturated Ammonium Sulfate (SAS) precipitation followed by dialysis against PBS.

**Storage**

Maintain refrigerated at 2-8°C for up to 2 weeks. For long term storage store at -20°C in small aliquots to prevent freeze-thaw cycles.

**Precautions**

ESRP1 Antibody (N-term) is for research use only and not for use in diagnostic or therapeutic procedures.

**ESRP1 Antibody (N-term) - Protein Information**

**Name** ESRP1

**Synonyms** RBM35A

**Function** mRNA splicing factor that regulates the formation of epithelial cell-specific isoforms. Specifically regulates the expression of FGFR2-IIIb, an epithelial cell-specific isoform of FGFR2. Also regulates the splicing of CD44, CTNND1, ENAH, 3 transcripts that undergo changes in splicing during the epithelial-to-mesenchymal transition (EMT). Acts by directly binding specific sequences in mRNAs. Binds the GU-rich sequence motifs in the ISE/ISS-3, a cis-element regulatory region present in the mRNA of FGFR2 (PubMed:[19285943](#)). Regulates splicing and expression of genes involved in inner ear development, auditory hair cell differentiation, and cell fate specification in the cochlear epithelium (By similarity).

**Cellular Location**

Nucleus.

**Tissue Location**

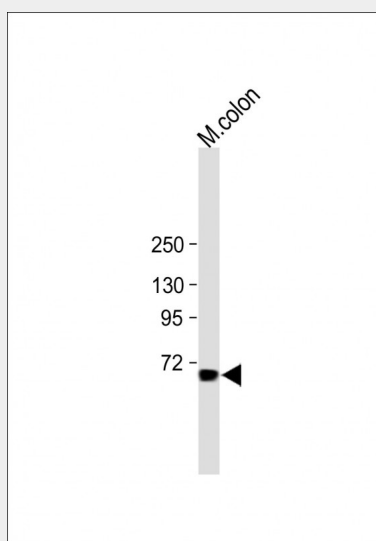
Epithelial cell-specific.

### ESRP1 Antibody (N-term) - Protocols

Provided below are standard protocols that you may find useful for product applications.

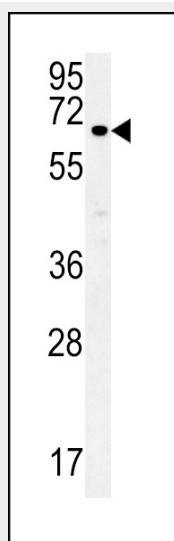
- [Western Blot](#)
- [Blocking Peptides](#)
- [Dot Blot](#)
- [Immunohistochemistry](#)
- [Immunofluorescence](#)
- [Immunoprecipitation](#)
- [Flow Cytometry](#)
- [Cell Culture](#)

### ESRP1 Antibody (N-term) - Images

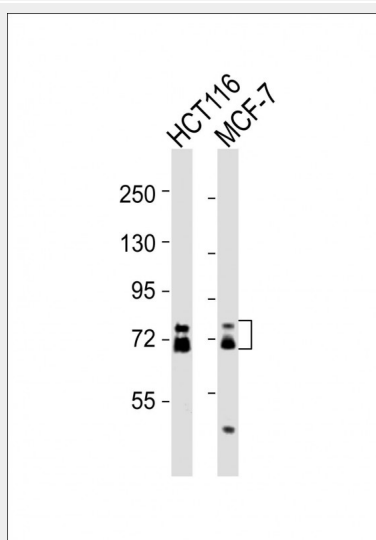


All lanes : Anti-ESRP1 Antibody (N-term) at 1:1000 dilution Lane 1: mouse colon tissue lysate Lysates/proteins at 20 µg per lane. Secondary Goat Anti-Rabbit IgG, (H+L), Peroxidase conjugated (ASP1615) at 1/15000 dilution. Observed band size : 54kDa Blocking/Dilution buffer: 5%

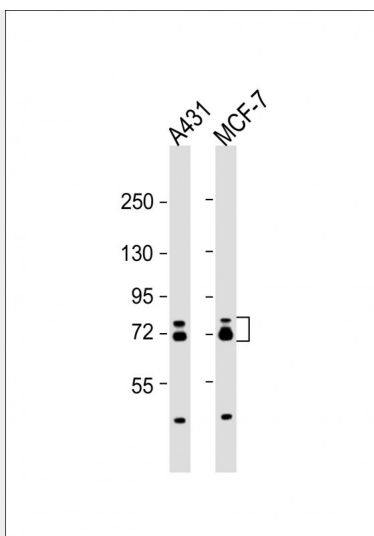
NFDM/TBST.



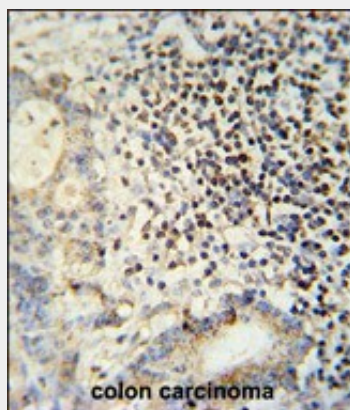
ESRP1 Antibody (N-term) (Cat. #AP5940a) western blot analysis in MCF-7 cell line lysates (35ug/lane). This demonstrates the ESRP1 antibody detected the ESRP1 protein (arrow).



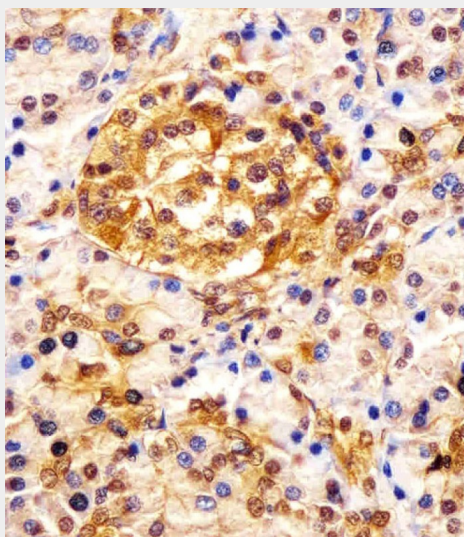
All lanes : Anti-ESRP1 Antibody (N-term) at 1:2000 dilution Lane 1: HCT116 whole cell lysates Lane 2: MCF-7 whole cell lysates Lysates/proteins at 20  $\mu$ g per lane. Secondary Goat Anti-Rabbit IgG, (H+L), Peroxidase conjugated at 1/10000 dilution Predicted band size : 76 kDa Blocking/Dilution buffer: 5% NFDM/TBST.



All lanes : Anti-ESRP1 Antibody (N-term) at 1:2000 dilution Lane 1: A431 whole cell lysate Lane 2: MCF-7 whole cell lysate Lysates/proteins at 20 µg per lane. Secondary Goat Anti-Rabbit IgG, (H+L), Peroxidase conjugated at 1/10000 dilution. Predicted band size : 76 kDa Blocking/Dilution buffer: 5% NFDM/TBST.



ESRP1 antibody (N-term) (Cat. #AP5940a) immunohistochemistry analysis in formalin fixed and paraffin embedded human colon carcinoma followed by peroxidase conjugation of the secondary antibody and DAB staining. This data demonstrates the use of the ESRP1 antibody (N-term) for immunohistochemistry. Clinical relevance has not been evaluated.



AP5940a staining ESRP1 in human pancreas tissue sections by Immunohistochemistry (IHC-P - paraformaldehyde-fixed, paraffin-embedded sections). Tissue was fixed with formaldehyde and blocked with 3% BSA for 0.5 hour at room temperature; antigen retrieval was by heat mediation with a citrate buffer (pH6). Samples were incubated with primary antibody (1/25) for 1 hour at 37°C. A undiluted biotinylated goat polyvalent antibody was used as the secondary antibody.

**ESRP1 Antibody (N-term) - Citations**

- [Transcriptomic analysis of PNN- and ESRP1-regulated alternative pre-mRNA splicing in human corneal epithelial cells.](#)