

**CREPT Polyclonal Antibody**  
**Purified Rabbit Polyclonal Antibody (Pab)**  
**Catalog # AP59447****Specification**

---

**CREPT Polyclonal Antibody - Product Information**

Application	WB
Primary Accession	<a href="#">O9NQG5</a>
Reactivity	Rat
Host	Rabbit
Clonality	Polyclonal
Calculated MW	36900

**CREPT Polyclonal Antibody - Additional Information****Gene ID** 58490**Other Names**

Regulation of nuclear pre-mRNA domain-containing protein 1B, Cell cycle-related and expression-elevated protein in tumor, RPRD1B, C20orf77, CREPT

**Format**

0.01M TBS(pH7.4), 0.09% (W/V) sodium azide and 50% Glyce

**Storage**

Store at -20 °C for one year. Avoid repeated freeze/thaw cycles. When reconstituted in sterile pH 7.4 0.01M PBS or diluent of antibody the antibody is stable for at least two weeks at 2-4 °C.

**CREPT Polyclonal Antibody - Protein Information****Name** RPRD1B**Synonyms** C20orf77, CREPT**Function**

Interacts with phosphorylated C-terminal heptapeptide repeat domain (CTD) of the largest RNA polymerase II subunit POLR2A, and participates in dephosphorylation of the CTD by RPAP2. Transcriptional regulator which enhances expression of CCND1. Promotes binding of RNA polymerase II to the CCND1 promoter and to the termination region before the poly-A site but decreases its binding after the poly-A site. Prevents RNA polymerase II from reading through the 3' end termination site and may allow it to be recruited back to the promoter through promotion of the formation of a chromatin loop. Also enhances the transcription of a number of other cell cycle-related genes including CDK2, CDK4, CDK6 and cyclin-E but not CDKN1A, CDKN1B or cyclin-A. Promotes cell proliferation.

**Cellular Location**

Nucleus

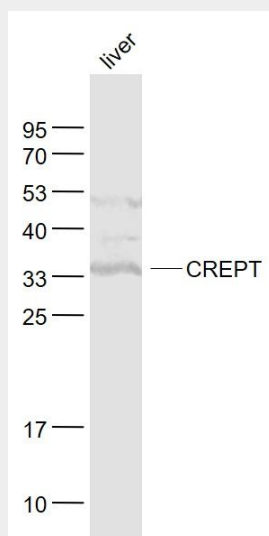
**Tissue Location**

Preferentially expressed in a range of tumor tissues including colon, lung, liver, breast, prostate, stomach, uterine endometrium and cervical cancers with higher levels in tumors than in adjacent non-tumor tissue (at protein level)

**CREPT Polyclonal Antibody - Protocols**

Provided below are standard protocols that you may find useful for product applications.

- [Western Blot](#)
- [Blocking Peptides](#)
- [Dot Blot](#)
- [Immunohistochemistry](#)
- [Immunofluorescence](#)
- [Immunoprecipitation](#)
- [Flow Cytometry](#)
- [Cell Culture](#)

**CREPT Polyclonal Antibody - Images****Sample:**

Liver (Mouse) Lysate at 40 ug

Primary: Anti- CREPT (bs-9971R) at 1/1000 dilution

Secondary: IRDye800CW Goat Anti-Rabbit IgG at 1/20000 dilution

Predicted band size: 37 kD

Observed band size: 35 kD