

C22orf25 Polyclonal Antibody
Purified Rabbit Polyclonal Antibody (Pab)
Catalog # AP59454**Specification**

C22orf25 Polyclonal Antibody - Product Information

Application	WB, IHC-P, IHC-F, IF, ICC, E
Primary Accession	Q6ICL3
Reactivity	Rat, Pig, Dog, Bovine
Host	Rabbit
Clonality	Polyclonal
Calculated MW	30937

C22orf25 Polyclonal Antibody - Additional Information**Gene ID** 128989**Other Names**

Transport and Golgi organization protein 2 homolog, TANGO2, C22orf25

Dilution

WB~~1:1000<br \>IHC-P~~N/A<br \>IHC-F~~N/A<br \>IF~~1:50~200<br \>ICC~~N/A<br \>E~~N/A

Format

0.01M TBS(pH7.4), 0.09% (W/V) sodium azide and 50% Glyce

Storage

Store at -20 °C for one year. Avoid repeated freeze/thaw cycles. When reconstituted in sterile pH 7.4 0.01M PBS or diluent of antibody the antibody is stable for at least two weeks at 2-4 °C.

C22orf25 Polyclonal Antibody - Protein Information**Name** TANGO2**Synonyms** C22orf25**Function**

May be involved in lipid homeostasis.

Cellular Location

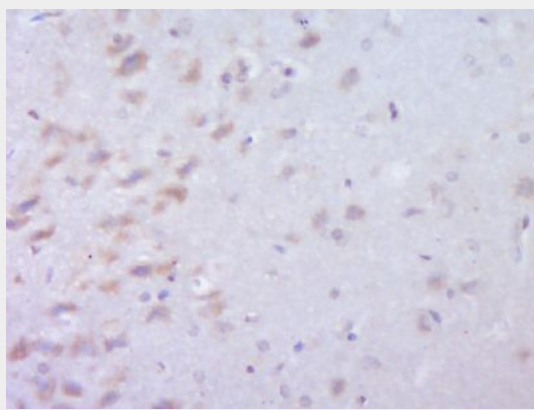
Cytoplasm Mitochondrion. Golgi apparatus. Note=Localizes predominantly to mitochondrion. Deteted in close proximity to endoplasmic reticulum and lipid droplets.

C22orf25 Polyclonal Antibody - Protocols

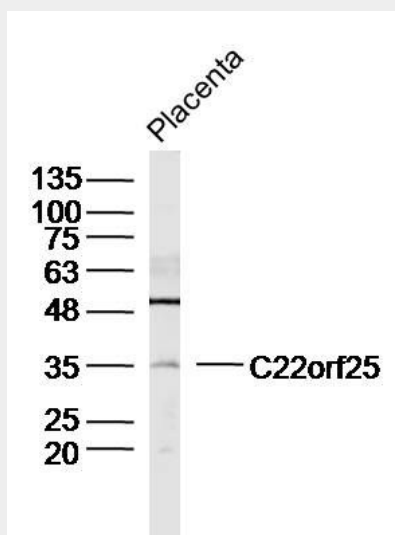
Provided below are standard protocols that you may find useful for product applications.

- [Western Blot](#)
- [Blocking Peptides](#)
- [Dot Blot](#)
- [Immunohistochemistry](#)
- [Immunofluorescence](#)
- [Immunoprecipitation](#)
- [Flow Cytometry](#)
- [Cell Culture](#)

C22orf25 Polyclonal Antibody - Images

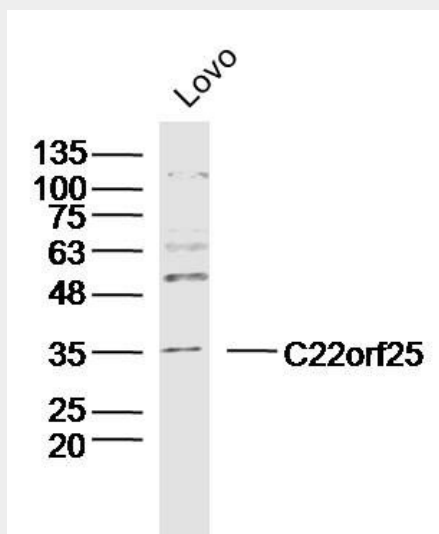


Paraformaldehyde-fixed, paraffin embedded (Rat brain); Antigen retrieval by boiling in sodium citrate buffer (pH6.0) for 15min; Block endogenous peroxidase by 3% hydrogen peroxide for 20 minutes; Blocking buffer (normal goat serum) at 37°C for 30min; Antibody incubation with (C22orf25) Polyclonal Antibody, Unconjugated (bs-9984R) at 1:400 overnight at 4°C, followed by operating according to SP Kit(Rabbit) (sp-0023) instructions and DAB staining.



Sample: Placenta (Mouse) Lysate at 40 ug
Primary: Anti- C22orf25 (bs-9984R) at 1/300 dilution
Secondary: IRDye800CW Goat Anti-Rabbit IgG at 1/20000 dilution
Predicted band size: 31kD

Observed band size: 35kD



Sample: Lovo Cell (Human) Lysate at 30 ug
Primary: Anti- C22orf25 (bs-9984R) at 1/300 dilution
Secondary: IRDye800CW Goat Anti-Rabbit IgG at 1/20000 dilution
Predicted band size: 31kD
Observed band size: 35kD