

Anti-ABCB7 Antibody
Rabbit polyclonal antibody to ABCB7
Catalog # AP59471**Specification**

Anti-ABCB7 Antibody - Product Information

Application	WB
Primary Accession	O75027
Other Accession	Q61102
Reactivity	Human, Mouse, Rat
Host	Rabbit
Clonality	Polyclonal
Calculated MW	82641

Anti-ABCB7 Antibody - Additional Information**Gene ID 22****Other Names**

ABC7; ATP-binding cassette sub-family B member 7 mitochondrial; ATP-binding cassette transporter 7; ABC transporter 7 protein

Target/Specificity

KLH-conjugated synthetic peptide encompassing a sequence within the C-term region of human ABCB7. The exact sequence is proprietary.

Dilution

WB~~WB (1/500 - 1/1000)

Format

Liquid in 0.42% Potassium phosphate, 0.87% Sodium chloride, pH 7.3, 30% glycerol, and 0.09% (W/V) sodium azide.

Storage

Store at -20 °C. Stable for 12 months from date of receipt

Anti-ABCB7 Antibody - Protein Information

Name ABCB7 ([HGNC:48](#))

Synonyms ABC7

Function

Exports glutathione-coordinated iron-sulfur clusters such as [2Fe-2S]-(GS)₄ cluster from the mitochondria to the cytosol in an ATP- dependent manner allowing the assembly of the cytosolic iron-sulfur (Fe/S) cluster-containing proteins and participates in iron homeostasis (PubMed:10196363, PubMed:17192393, PubMed:17192393)

[33157103](http://www.uniprot.org/citations/33157103)). Moreover, through a functional complex formed of ABCB7, FECH and ABCB10, also plays a role in the cellular iron homeostasis, mitochondrial function and heme biosynthesis (PubMed:<[30765471](http://www.uniprot.org/citations/30765471)>). In cardiomyocytes, regulates cellular iron homeostasis and cellular reactive oxygen species (ROS) levels through its interaction with COX4I1 (By similarity). May also play a role in hematopoiesis (By similarity).

Cellular Location

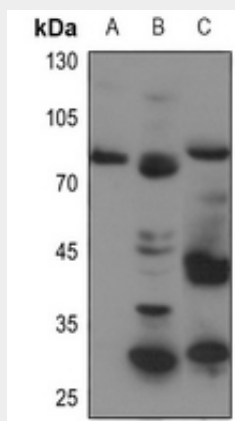
Mitochondrion inner membrane {ECO:0000250|UniProtKB:P40416}; Multi-pass membrane protein {ECO:0000250|UniProtKB:P40416}

Anti-ABCB7 Antibody - Protocols

Provided below are standard protocols that you may find useful for product applications.

- [Western Blot](#)
- [Blocking Peptides](#)
- [Dot Blot](#)
- [Immunohistochemistry](#)
- [Immunofluorescence](#)
- [Immunoprecipitation](#)
- [Flow Cytometry](#)
- [Cell Culture](#)

Anti-ABCB7 Antibody - Images



Western blot analysis of ABCB7 expression in HEK293T (A), Hela (B), mouse lung (C) whole cell lysates.

Anti-ABCB7 Antibody - Background

KLH-conjugated synthetic peptide encompassing a sequence within the C-term region of human ABCB7. The exact sequence is proprietary.