

Anti-ALK1 Antibody
Rabbit polyclonal antibody to ALK1
Catalog # AP59475**Specification**

Anti-ALK1 Antibody - Product Information

Application	WB, IH, IF
Primary Accession	P37023
Other Accession	Q61288
Reactivity	Human, Mouse, Rat, Pig, Bovine, Drosophila
Host	Rabbit
Clonality	Polyclonal
Calculated MW	56124

Anti-ALK1 Antibody - Additional Information**Gene ID** 94**Other Names**

ACVRLK1; ALK1; Serine/threonine-protein kinase receptor R3; SKR3; Activin receptor-like kinase 1; ALK-1; TGF-B superfamily receptor type I; TSR-I

Target/Specificity

Recognizes endogenous levels of ALK1 protein.

DilutionWB~~WB (1/500 - 1/1000), IH (1/100 - 1/200), IF/IC (1/100 - 1/500)
IH~~WB (1/500 - 1/1000), IH (1/100 - 1/200), IF/IC (1/100 - 1/500)
IF~~WB (1/500 - 1/1000), IH (1/100 - 1/200), IF/IC (1/100 - 1/500)**Format**

Liquid in 0.42% Potassium phosphate, 0.87% Sodium chloride, pH 7.3, 30% glycerol, and 0.09% (W/V) sodium azide.

Storage

Store at -20 °C. Stable for 12 months from date of receipt

Anti-ALK1 Antibody - Protein Information**Name** ACVRL1**Synonyms** ACVRLK1, ALK1**Function**

Type I receptor for TGF-beta family ligands BMP9/GDF2 and BMP10 and important regulator of normal blood vessel development. On ligand binding, forms a receptor complex consisting of two type II and two type I transmembrane serine/threonine kinases. Type II receptors phosphorylate

and activate type I receptors which autophosphorylate, then bind and activate SMAD transcriptional regulators. May bind activin as well.

Cellular Location

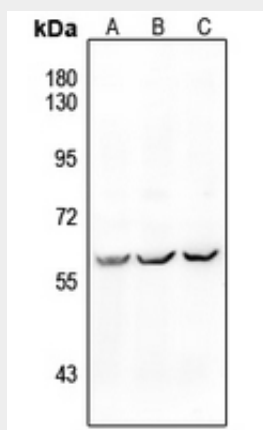
Cell membrane; Single-pass type I membrane protein

Anti-ALK1 Antibody - Protocols

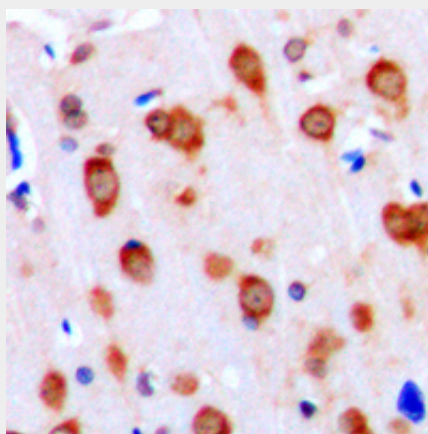
Provided below are standard protocols that you may find useful for product applications.

- [Western Blot](#)
- [Blocking Peptides](#)
- [Dot Blot](#)
- [Immunohistochemistry](#)
- [Immunofluorescence](#)
- [Immunoprecipitation](#)
- [Flow Cytometry](#)
- [Cell Culture](#)

Anti-ALK1 Antibody - Images

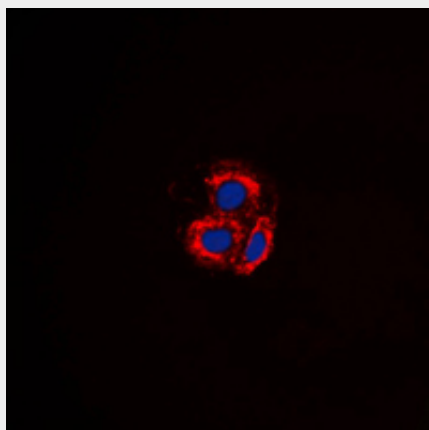


Western blot analysis of ALK1 expression in MCF7 (A), H1792 (B), A549 (C) whole cell lysates.



Immunohistochemical analysis of ALK1 staining in human brain formalin fixed paraffin embedded tissue section. The section was pre-treated using heat mediated antigen retrieval with sodium citrate buffer (pH 6.0). The section was then incubated with the antibody at room temperature

and detected using an HRP conjugated compact polymer system. DAB was used as the chromogen. The section was then counterstained with haematoxylin and mounted with DPX.



Immunofluorescent analysis of ALK1 staining in MCF7 cells. Formalin-fixed cells were permeabilized with 0.1% Triton X-100 in TBS for 5-10 minutes and blocked with 3% BSA-PBS for 30 minutes at room temperature. Cells were probed with the primary antibody in 3% BSA-PBS and incubated overnight at 4 °C in a humidified chamber. Cells were washed with PBST and incubated with a DyLight 594-conjugated secondary antibody (red) in PBS at room temperature in the dark. DAPI was used to stain the cell nuclei (blue).

Anti-ALK1 Antibody - Background

KLH-conjugated synthetic peptide encompassing a sequence within the center region of human ALK1. The exact sequence is proprietary.