

Anti-AKT (pY315) Antibody
Rabbit polyclonal antibody to AKT (pY315)
Catalog # AP59477**Specification**

Anti-AKT (pY315) Antibody - Product Information

Application	WB, IH, IF, E
Primary Accession	P31749 , P31751 , Q9Y243
Other Accession	P31750 , Q60823 , Q9WUA6
Reactivity	Human, Mouse, Rat, Zebrafish, Chicken, Bovine
Host	Rabbit
Clonality	Polyclonal

Anti-AKT (pY315) Antibody - Additional Information**Other Names**

AKT1; PKB; RAC; RAC-alpha serine/threonine-protein kinase; Protein kinase B; PKB; Protein kinase B alpha; PKB alpha; Proto-oncogene c-Akt; RAC-PK-alpha; AKT2; RAC-beta serine/threonine-protein kinase; Protein kinase Akt-2; Protein kinase B beta; PKB beta; RAC-PK-beta; AKT3; PKBG; RAC-gamma serine/threonine-protein kinase; Protein kinase Akt-3; Protein kinase B gamma; PKB gamma; RAC-PK-gamma; STK-2

Target/Specificity

Recognizes endogenous levels of AKT (pY315) protein.

Dilution

WB~~WB (1/500 - 1/1000), IH (1/100 - 1/200), IF/IC (1/100 - 1/500)
IH~~WB (1/500 - 1/1000), IH (1/100 - 1/200), IF/IC (1/100 - 1/500)
IF~~WB (1/500 - 1/1000), IH (1/100 - 1/200), IF/IC (1/100 - 1/500)
E~~WB (1/500 - 1/1000), IH (1/100 - 1/200), IF/IC (1/100 - 1/500)

Format

Liquid in 0.42% Potassium phosphate, 0.87% Sodium chloride, pH 7.3, 30% glycerol, and 0.09% (W/V) sodium azide.

Storage

Store at -20 °C. Stable for 12 months from date of receipt

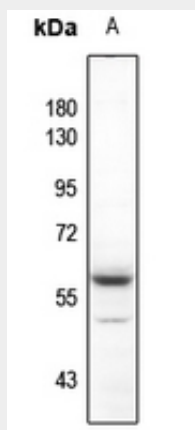
Anti-AKT (pY315) Antibody - Protein Information**Anti-AKT (pY315) Antibody - Protocols**

Provided below are standard protocols that you may find useful for product applications.

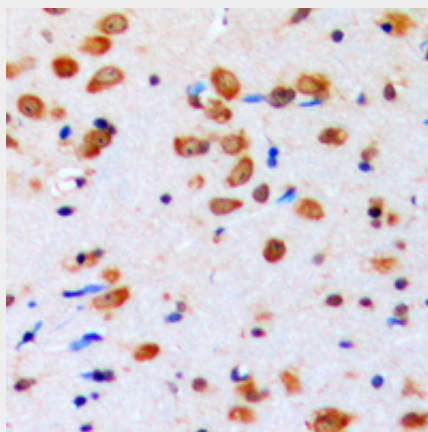
- [Western Blot](#)

- [Blocking Peptides](#)
- [Dot Blot](#)
- [Immunohistochemistry](#)
- [Immunofluorescence](#)
- [Immunoprecipitation](#)
- [Flow Cytometry](#)
- [Cell Culture](#)

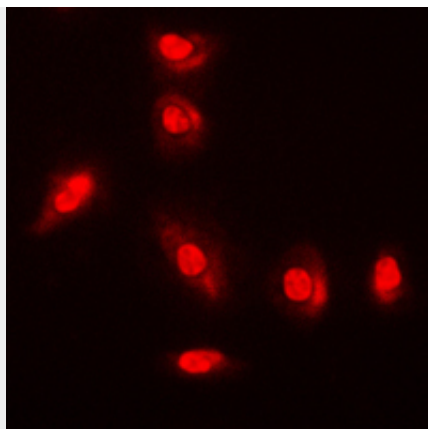
Anti-AKT (pY315) Antibody - Images



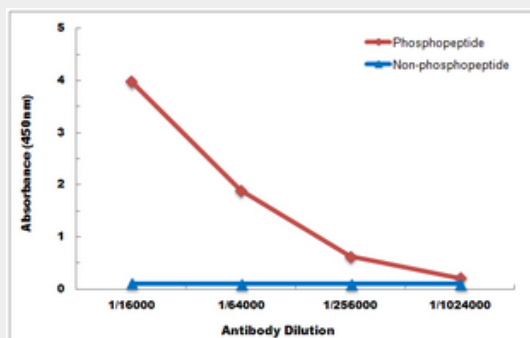
Western blot analysis of AKT (pY315) expression in U87MG (A) whole cell lysates.



Immunohistochemical analysis of AKT (pY315) staining in human brain formalin fixed paraffin embedded tissue section. The section was pre-treated using heat mediated antigen retrieval with sodium citrate buffer (pH 6.0). The section was then incubated with the antibody at room temperature and detected using an HRP conjugated compact polymer system. DAB was used as the chromogen. The section was then counterstained with haematoxylin and mounted with DPX.



Immunofluorescent analysis of AKT (pY315) staining in A549 cells. Formalin-fixed cells were permeabilized with 0.1% Triton X-100 in TBS for 5-10 minutes and blocked with 3% BSA-PBS for 30 minutes at room temperature. Cells were probed with the primary antibody in 3% BSA-PBS and incubated overnight at 4 °C in a humidified chamber. Cells were washed with PBST and incubated with a DyLight 594-conjugated secondary antibody (red) in PBS at room temperature in the dark.



Direct ELISA antibody dose-response curve using Anti-AKT (pY315) Antibody. Antigen (phosphopeptide and non-phosphopeptide) concentration is 5 ug/ml. Goat Anti-Rabbit IgG (H&L) - HRP was used as the secondary antibody, and signal was developed by TMB substrate.

Anti-AKT (pY315) Antibody - Background

KLH-conjugated synthetic peptide encompassing a sequence within the center region of human AKT. The exact sequence is proprietary.